

Anti-RUVBL2 Mouse Monoclonal Antibody [Clone ID: OT11A6]

Catalog Number: M02246

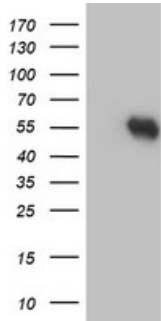
Overview

Product Name	Anti-RUVBL2 Mouse Monoclonal Antibody [Clone ID: OT11A6]
Reactive Species	Dog, Human, Monkey, Mouse, Rat
Description	Boster Bio RUVBL2 (Reptin/TIP49B) mouse monoclonal antibody, clone OT11A6 (formerly 1A6). Catalog# M02246. Tested in FC, IF, IHC, WB. This antibody reacts with Human, Monkey, Mouse, Rat, Dog.
Application	Flow Cytometry, IF, IHC, WB
Clonality	Monoclonal OT11A6
Formulation	PBS (pH 7.3) containing 1% stabilizing protein, 50% glycerol and 0.02% sodium azide. This antibody is supplied in a stabilized formulation. Compatibility with conjugation reactions depends on the chemistry of the conjugation method used. For conjugation methods that are not compatible with the stabilizing components present in this formulation, a carrier-free antibody format is required.
Storage Instructions	Store at -20°C as received.
Host	Mouse
Uniprot ID	Q9Y230

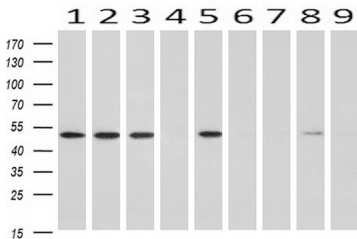
Technical Details

Immunogen	Human recombinant protein fragment corresponding to amino acids 113-370 of human RUVBL2 (NP_006657) produced in E.coli.
Isotype	IgG1
Concentration	0.6 mg/ml
Purification	Purified from mouse ascites fluids or tissue culture supernatant by affinity chromatography (protein A/G)
Suggested Dilutions	WB: 1:500~2000 IHC: 1:150 IF: 1:100 Flow cytometry: 1:100

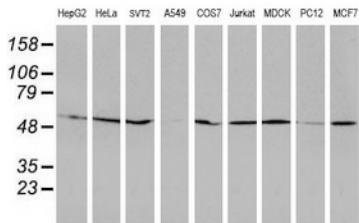
Anti-RUVBL2 Mouse Monoclonal Antibody [Clone ID: OTI1A6] (M02246) Images



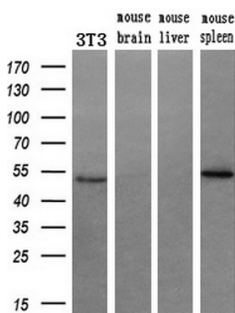
HEK293T cells were transfected with the pCMV6-ENTRY control (Left lane) or pCMV6-ENTRY RUVBL2 (Right lane) cDNA for 48 hrs and lysed. Equivalent amounts of cell lysates (5 ug per lane) were separated by SDS-PAGE and immunoblotted with anti-RUVBL2.



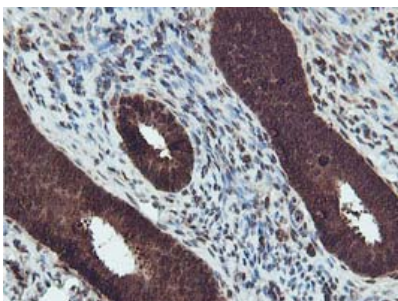
Western blot analysis of extracts (10ug) from 9 Human tissue by using anti-RUVBL2 monoclonal antibody at 1:200 (1: Testis; 2: Omentum; 3: Uterus; 4: Breast; 5: Brain; 6: Liver; 7: Ovary; 8: Thyroid gland; 9: colon).



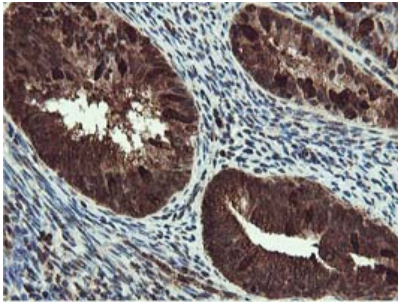
Western blot analysis of extracts (35ug) from 9 different cell lines by using anti-RUVBL2 monoclonal antibody.



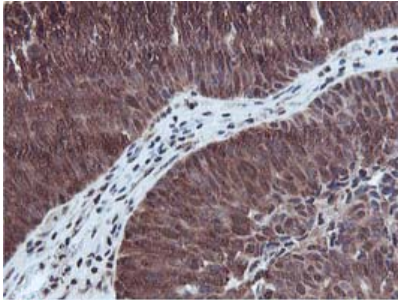
Western blot analysis of extracts (10ug) from a mouse cell line and 3 different mouse tissues by using anti-RUVBL2 monoclonal antibody (1:200).



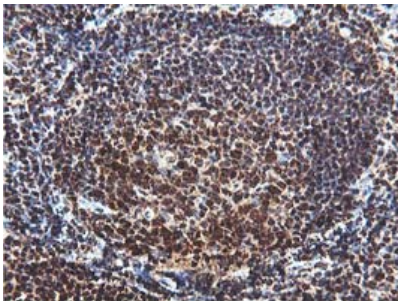
Immunohistochemical staining of paraffin-embedded Human endometrium tissue within the normal limits using anti-RUVBL2 mouse monoclonal antibody. (Heat-induced epitope retrieval by 10mM citric buffer)



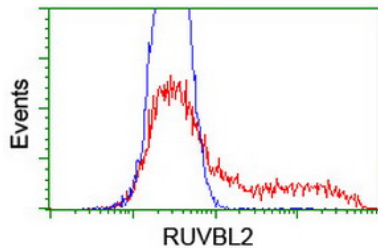
Immunohistochemical staining of paraffin-embedded Adenocarcinoma of Human endometrium tissue using anti-RUVBL2 mouse monoclonal antibody. (Heat-induced epitope retrieval by 10mM citric buffer)



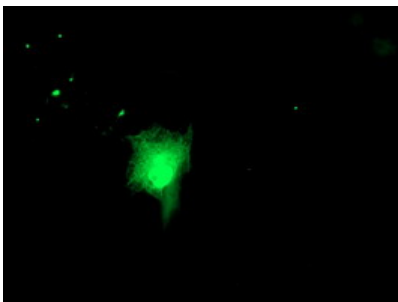
Immunohistochemical staining of paraffin-embedded Carcinoma of Human bladder tissue using anti-RUVBL2 mouse monoclonal antibody. (Heat-induced epitope retrieval by 10mM citric buffer)



Immunohistochemical staining of paraffin-embedded Human tonsil within the normal limits using anti-RUVBL2 mouse monoclonal antibody. (Heat-induced epitope retrieval by 10mM citric buffer)



HEK293T cells transfected with either RUVBL2 (Myc-DDK-tagged) overexpress plasmid (Red) or empty vector control plasmid (Blue) were immunostained by anti-RUVBL2 antibody (M02246)



Anti-RUVBL2 mouse monoclonal antibody (M02246) immunofluorescent staining of COS7 cells transiently transfected by pCMV6-ENTRY RUVBL2.

Submit a product review to [Biocompare.com](https://www.biocompare.com)

Submit a review of this product to [Biocompare.com](https://www.biocompare.com) to receive a \$20 Amazon.com giftcard! Your



reviews help your fellow scientists make the right decisions. Thank you for your contribution.

Anti-RUVBL2 Mouse Monoclonal Antibody [Clone ID: OT11A6]

For Research Use Only. Not for use in diagnostic procedures.