

Anti-ADORA2A Antibody (C-term)

Catalog Number: M02268

About ADORA2A

Receptor for adenosine. The activity of this receptor is mediated by G proteins which activate adenylyl cyclase.

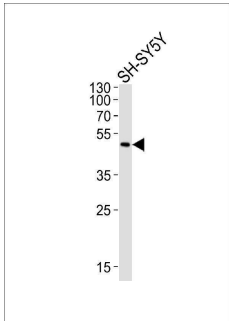
Overview

Product Name	Anti-ADORA2A Antibody (C-term)
Reactive Species	Human
Description	Boster Bio Anti-ADORA2A Antibody (C-term) (Catalog # M02268). Tested in WB, IHC-P, Flow Cytometry application(s). This antibody reacts with Human.
Application	Flow Cytometry, IHC-P, WB
Clonality	Polyclonal
Formulation	Purified polyclonal antibody supplied in PBS with 0.09% (W/V) sodium azide.
Storage Instructions	Maintain refrigerated at 2-8°C for up to 2 weeks. For long-term storage, store at -20°C in small aliquots to prevent freeze-thaw cycles.
Host	Rabbit
Uniprot ID	P29274

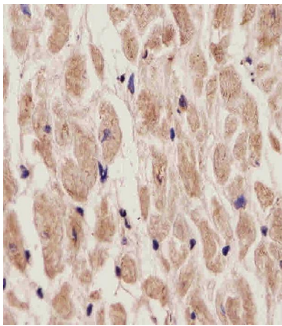
Technical Details

Immunogen	This ADORA2A antibody is generated from a rabbit immunized with a KLH conjugated synthetic peptide between 347-381 amino acids from the C-terminal region of human ADORA2A.
Predicted Reactive Species	Bovine, Chicken, Horse, Monkey, Pig, Sheep, Xenopus
Isotype	Rabbit IgG
Purification	This antibody is purified through a protein A column, followed by peptide affinity purification.
Suggested Dilutions	WB: 1:1000 IHC-P: 1:25 FC: 1:25

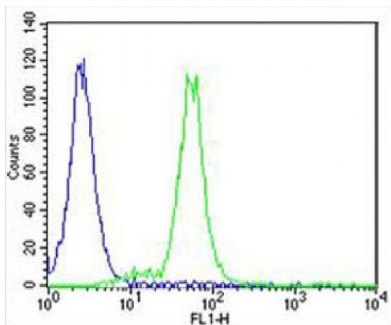
Anti-ADORA2A Antibody (C-term) (M02268) Images



Western blot analysis of lysate from SH-SY5Y cell line, using ADORA2A Antibody (C-term). M02268 was diluted at 1:1000. A goat anti-rabbit IgG H&L (HRP) at 1:10000 dilution was used as the secondary antibody. Lysate at 20ug.



M02268 staining ADORA2A in Human heart tissue sections by Immunohistochemistry (IHC-P -paraformaldehyde-fixed, paraffin-embedded sections). Tissue was fixed with formaldehyde and blocked with 3% BSA for 0.5 hour at room temperature; antigen retrieval was by heat mediation with a citrate buffer (pH6). Samples were incubated with primary antibody (1/25) for 1 hours at 37°C. A undiluted biotinylated goat polyvalent antibody was used as the secondary antibody.



Overlay histogram showing SH-SY5Y cells stained with M02268 (green line). The cells were fixed with 4% paraformaldehyde (10 min) and then permeabilized with 90% methanol for 10 min. The cells were then incubated in 2% bovine serum albumin to block non-specific protein-protein interactions followed by the antibody (M02268, 1:25 dilution) for 60 min at 37°C. The secondary antibody used was Alexa Fluor® 488 goat anti-rabbit IgG (H+L) at 1/400 dilution for 40 min at 37°C. Isotype control antibody (blue line) was rabbit IgG1 (1g/1x10⁶ cells) used under the same conditions. Acquisition of >10,000 events was performed.

Submit a product review to [Biocompare.com](https://www.biocompare.com)

Submit a review of this product to [Biocompare.com](https://www.biocompare.com) to receive a \$20 Amazon.com giftcard! Your reviews help your fellow scientists make the right decisions. Thank you for your contribution.



Anti-ADORA2A Antibody (C-term)

For Research Use Only. Not for use in diagnostic procedures.