

Anti-MRC1/Cd206 Rabbit Monoclonal Antibody

Catalog Number: M02285

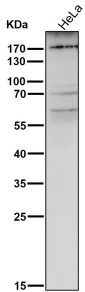
Overview

Product Name	Anti-MRC1/Cd206 Rabbit Monoclonal Antibody
Reactive Species	Human
Description	Boster Bio Anti-MRC1/Cd206 Rabbit Monoclonal Antibody catalog # M02285. Tested in WB, ICC/IF applications. This antibody reacts with Human.
Application	IF, ICC, WB
Clonality	Monoclonal AOO-13
Formulation	Rabbit IgG in stabilizing components, phosphate buffered saline, pH 7.4, 150mM NaCl, 0.02% sodium azide and 50% glycerol. *This antibody is supplied in a stabilized formulation. Compatibility with conjugation reactions depends on the chemistry of the conjugation method used. For conjugation methods that are not compatible with the stabilizing components present in this formulation, a carrier-free antibody format is required.
Storage Instructions	Store at -20°C for one year. For short term storage and frequent use, store at 4°C for up to one month. Avoid repeated freeze-thaw cycles.
Host	Rabbit
Uniprot ID	P22897

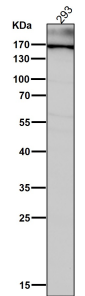
Technical Details

Immunogen	A synthesized peptide derived from human MRC1
Isotype	Rabbit IgG
Form	Liquid
Concentration	0.5mg/ml
Purification	Affinity-chromatography
Suggested Dilutions	WB 1:500-2000 ICC/IF 1:50-200

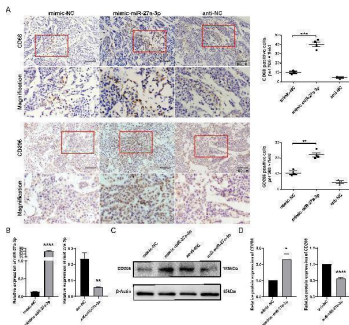
Anti-MRC1/Cd206 Rabbit Monoclonal Antibody (M02285) Images



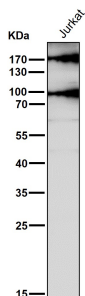
All lanes use the Antibody at 1:3K dilution for 1 hour at room temperature.



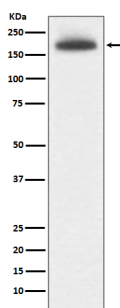
All lanes use the Antibody at 1:1W dilution for 1 hour at room temperature.



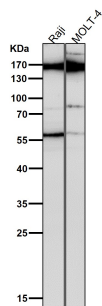
miR-27a-3p promotes the M2 polarization of macrophage. (A) Representative images for the immunohistochemical staining of macrophage maker CD68 and CD206 in nude mice xenografts, bar = 100 um; and the number of CD68, CD206 positive cells per 200 × field for each group (mean ± SEM). **P < 0.01, ***P < 0.001 vs control. Below each group of images is an image showing the magnification of the corresponding box area above. (B) The expression of miR-27a-3p in mimic-miR-27a-3p or anti-miR-27a-3p treated THP1 cells was evaluated by qRT-PCR 24 h after transfection, normalized to U6 snRNA (mean ± SEM). **P < 0.01, ****P < 0.0001 vs. control. (C, D) The expression of CD206 was evaluated in mimic-miR-27a-3p or anti-miR-27a-3p treated THP1 cells by western blotting normalized to beta-actin (mean ± SEM). *P < 0.05, ****P < 0.0001 vs. control. The data were from three independent experiments. Index in PubMed under a CC BY license. PMID: 39742261



All lanes use the Antibody at 1:3K dilution for 1 hour at room temperature.



Western blot analysis of MRC1 expression in 293T cell lysate.



All lanes use the Antibody at 1:1W dilution for 1 hour at room temperature.

1 Publications Citing This Product

1. PubMed ID: -, xiangrong chen, Yile Zeng, Fan Wang et al. ADAM17 Aggravates the Inflammatory Response by Modulating Microglia Polarization Through the TGF-beta1/Smad Pathway Following Experimental Traumatic Brain Injury, 04 February 2021, PREPRINT (Version 1) available at

Visit bosterbio.com/anti-mrc1-rabbit-monoclonal-antibody-m02285-boster.html to see all 1 publications.

Submit a product review to Biocompare.com

Submit a review of this product to Biocompare.com to receive a \$20 Amazon.com giftcard! Your reviews help your fellow scientists make the right decisions. Thank you for your contribution.



Anti-MRC1/Cd206 Rabbit Monoclonal Antibody

For Research Use Only. Not for use in diagnostic procedures.