

## Anti-Hu CD206 Purified MRC1 Monoclonal Antibody

Catalog Number: M02285-1

### About MRC1

CD206 (macrophage mannose receptor, MMR), also known as mannose receptor C1 (MRC1), is a type I transmembrane glycoprotein serving as pattern recognition receptor for carbohydrate groups on the surface of bacteria, fungi and other pathogens. Expressed mainly on tissue macrophages and dendritic cells, CD206 mediates endocytosis of these pathogens and presentation of their antigens to the adaptive immune system. CD206 can also be detected in a soluble form in human plasma and is elevated in patients with acute sepsis.

### Overview

Product Name	Anti-Hu CD206 Purified MRC1 Monoclonal Antibody
Reactive Species	Human
Description	Boster Bio Anti-Hu CD206 Purified MRC1 Monoclonal Antibody (Catalog# M02285-1). Tested in Flow Cytometry, IP, WB, IHC-F, ICC application(s). This antibody reacts with Human.
Application	Flow Cytometry, IP, IHC-F, ICC, WB
Clonality	Monoclonal 15-2
Formulation	Phosphate buffered saline (PBS), pH 7.4, 15 mM sodium azide
Storage Instructions	Store at 2-8°C. Do not freeze.
Host	Mouse
Uniprot ID	P22897

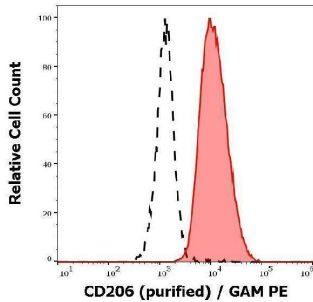
### Technical Details

Immunogen	Purified human mannose receptor. The mouse monoclonal antibody 15-2 (also known as MR15-2) recognizes an extracellular epitope of CD206 (macrophage mannose receptor, MMR), a 162-175 kDa type I transmembrane protein expressed mainly on macrophages, dendritic cells and hepatic or lymphatic endothelial cells, but not on monocytes.
Predicted Reactive Species	Primate
Cross Reactivity	This antibody does not cross-react with Thy-1.1 alloantigen.
Isotype	Mouse IgG1 kappa
Form	Liquid
Concentration	1 mg/ml
Purification	Purified by protein-A affinity chromatography.

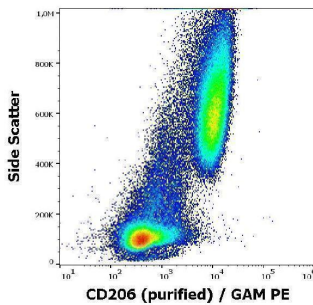
Suggested Dilutions

Flow cytometry: 1-4 ug/ml.  
Western blotting: 1-2 ug/ml; non-reducing conditions.

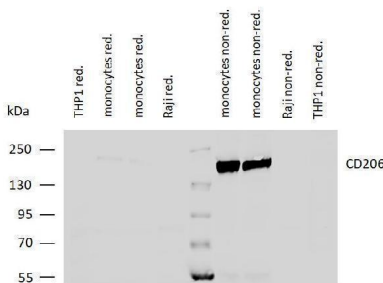
## Anti-Hu CD206 Purified MRC1 Monoclonal Antibody (M02285-1) Images



Separation of human CD206 positive dendritic cells differentiated upon monocyte stimulation (GM-CSF + IL-4) (red-filled) from non-stimulated lymphocytes (black-dashed) in flow cytometry analysis (surface staining) of human stimulated (GM-CSF + IL-4) peripheral blood mononuclear cells stained using anti-human CD206 (15-2) purified antibody (concentration in sample 9  $\mu\text{g/ml}$ ), GAM PE.



Flow cytometry surface staining pattern of human stimulated (GM-CSF + IL-4) peripheral blood mononuclear cells stained using anti-human CD206 (15-2) purified antibody (concentration in sample 9  $\mu\text{g/ml}$ ), GAM PE.



Western blotting analysis of human CD206 using mouse monoclonal antibody 15-2 on lysates of differentiated monocytes (two batches), and on THP-1 and Raji cells (negative controls) under reducing and non-reducing conditions. Nitrocellulose membrane was probed with 2  $\mu\text{g/ml}$  of mouse monoclonal antibody followed by IRDye800-conjugated anti-mouse secondary antibody. CD206 was detected around 170 kDa.

### Submit a product review to [Biocompare.com](https://www.biocompare.com)

Submit a review of this product to [Biocompare.com](https://www.biocompare.com) to receive a \$20 Amazon.com giftcard! Your reviews help your fellow scientists make the right decisions. Thank you for your contribution.



Anti-Hu CD206 Purified MRC1 Monoclonal Antibody

For Research Use Only. Not for use in diagnostic procedures.