

Anti-CD206/MRC1 Rabbit Monoclonal Antibody

Catalog Number: M02285-2

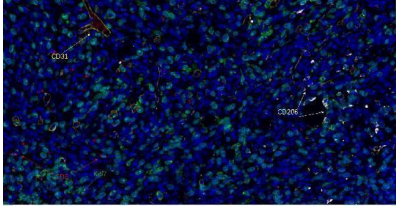
Overview

Product Name	Anti-CD206/MRC1 Rabbit Monoclonal Antibody
Reactive Species	Human, Mouse, Rat
Description	This Recombinant Rabbit Monoclonal Antibody detects endogenous levels of CD206/MRC1 protein. Validated for research with WB,IHC,IF,IP,ELISA applications. Anti CD206/MRC1 is reactive for Human, Mouse, Rat samples
Application	ELISA, IP, IF, IHC, WB
Clonality	Monoclonal
Formulation	PBS, 50% glycerol, 0.05% Proclin 300, 0.05% stabilizing protein This antibody is supplied in a stabilized formulation. Compatibility with conjugation reactions depends on the chemistry of the conjugation method used. For conjugation methods that are not compatible with the stabilizing components present in this formulation, a carrier-free antibody format is required.
Storage Instructions	Store at -20°C/1 year
Host	Rabbit
Uniprot ID	P22897

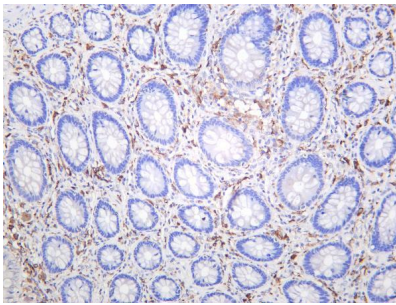
Technical Details

Isotype	IgG, Kappa
Purification	Protein A
Suggested Dilutions	IHC 1:200-1:1000 WB 1:5000-1:20000 IF 1:200-1:1000 ELISA 1:5000-1:20000 IP 1:50-1:200

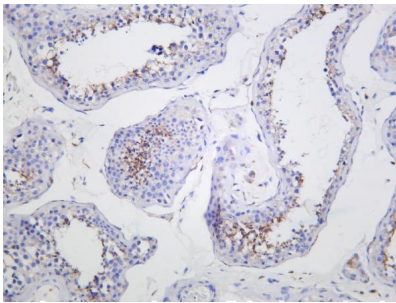
Anti-CD206/MRC1 Rabbit Monoclonal Antibody (M02285-2) Images



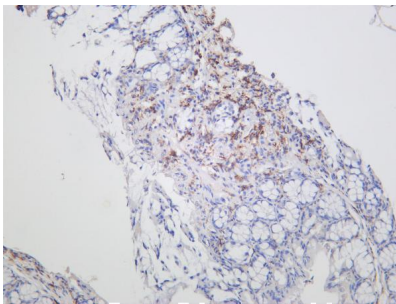
Fluorescence multiplex immunohistochemical analysis of human tonsil tissue (formalin-fixed paraffin-embedded section). The immunostaining was performed by Sextuple-Fluorescence kit (RS0039, Immunoway). CD3 rabbit mAb (RED), Ki67 rabbit mAb (GREEN), CD31 rabbit mAb (YELLOW), CD206 Rabbit mAb (WHITE) was tested with different TSA Fluorescence reagent. Microscopy and pseudocoloring of individual dyes was performed using a Slideviewer Imaging System (Excilone).



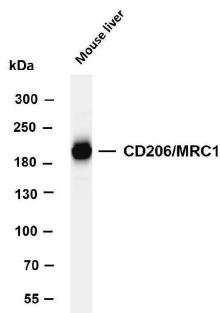
Human colon was stained with anti-CD206/MRC1 rabbit antibody



Human testis was stained with anti-CD206/MRC1 rabbit antibody



Mouse colon was stained with anti-CD206/MRC1 rabbit antibody



Various whole cell lysates were separated by 4-8% SDS-PAGE, and the membrane was blotted with anti-CD206/MRC1 antibody. The HRP-conjugated Goat anti-Rabbit IgG(H + L) antibody was used to detect the antibody. Lane 1: Mouse liver Predicted band size: 190kDa Observed band size: 190kDa

Submit a product review to Biocompare.com

Submit a review of this product to Biocompare.com to receive a \$20 Amazon.com giftcard! Your reviews help your fellow scientists make the right decisions. Thank you for your contribution.



Anti-CD206/MRC1 Rabbit Monoclonal Antibody

For Research Use Only. Not for use in diagnostic procedures.