

## Anti-Cytokeratin 10 KRT10 Rabbit Monoclonal Antibody

Catalog Number: M02305-1

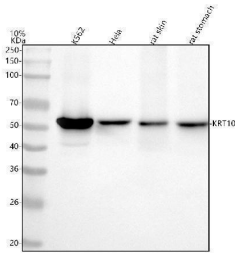
### Overview

Product Name	Anti-Cytokeratin 10 KRT10 Rabbit Monoclonal Antibody
Reactive Species	Human, Mouse, Rat
Description	Boster Bio Anti-Cytokeratin 10 KRT10 Rabbit Monoclonal Antibody catalog # M02305-1. Tested in WB, IHC, ICC/IF applications. This antibody reacts with Human, Mouse, Rat.
Application	IF, IHC, ICC, WB
Clonality	Monoclonal EEF-11
Formulation	Rabbit IgG in stabilizing components, phosphate buffered saline, pH 7.4, 150mM NaCl, 0.02% sodium azide and 50% glycerol. *This antibody is supplied in a stabilized formulation. Compatibility with conjugation reactions depends on the chemistry of the conjugation method used. For conjugation methods that are not compatible with the stabilizing components present in this formulation, a carrier-free antibody format is required.
Storage Instructions	Store at -20°C for one year. For short term storage and frequent use, store at 4°C for up to one month. Avoid repeated freeze-thaw cycles.
Host	Rabbit
Uniprot ID	P13645

### Technical Details

Immunogen	A synthesized peptide derived from human Cytokeratin 10
Isotype	Rabbit IgG
Form	Liquid
Concentration	0.5mg/ml
Purification	Affinity-chromatography
Suggested Dilutions	WB 1:500-2000 IHC 1:50-200 ICC/IF 1:50-200

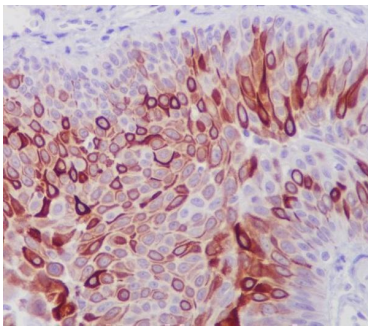
## Anti-Cytokeratin 10 KRT10 Rabbit Monoclonal Antibody (M02305-1) Images



Western blot analysis of KRT10 using anti-KRT10 antibody (M02305-1). Electrophoresis was performed on a 5-20% SDS-PAGE gel at 70V (Stacking gel) / 90V (Resolving gel) for 2-3 hours. The sample well of each lane was loaded with 30 ug of sample under reducing conditions. Lane 1: human K562 whole cell lysates, Lane 2: human SH-SY5Y whole cell lysates, Lane 3: human Jurkat whole cell lysates, Lane 4: rat brain tissue lysates, Lane 5: mouse brain tissue lysates. After electrophoresis, proteins were transferred to a nitrocellulose membrane at 150 mA for 50-90 minutes. Blocked the membrane with 5% non-fat milk/TBS for 1.5 hour at RT. The membrane was incubated with rabbit anti-KRT10 antigen affinity purified monoclonal antibody (Catalog # M02305-1) at 1:500 overnight at 4°C, then washed with TBS-0.1%Tween 3 times with 5 minutes each and probed with a goat anti-rabbit IgG-HRP secondary antibody at a dilution of 1:500 for 1.5 hour at RT. The signal is developed using an Enhanced Chemiluminescent detection (ECL) kit (Catalog # EK1002) with Tanon 5200 system. A specific band was detected for KRT10 at approximately 59 kDa. The expected band size for KRT10 is at 59 kDa.



Immunofluorescent analysis of HACAT cells, using Cytokeratin 10 Antibody.



Immunohistochemical analysis of paraffin-embedded human bladder, using Cytokeratin 10 Antibody.

### 1 Publications Citing This Product

1. PubMed ID: 24391454, Localization of Human Mesenchymal Stem Cells from Umbilical Cord Blood and Their Role in Repair of Diabetic Foot Ulcers in Rats

Visit [bosterbio.com/anti-cytokeratin-10-rabbit-monoclonal-antibody-m02305-1-boster.html](http://bosterbio.com/anti-cytokeratin-10-rabbit-monoclonal-antibody-m02305-1-boster.html) to see all 1 publications.

## Submit a product review to Biocompare.com

Submit a review of this product to Biocompare.com to receive a \$20 Amazon.com giftcard! Your reviews help your fellow scientists make the right decisions. Thank you for your contribution.



Anti-Cytokeratin 10 KRT10 Rabbit Monoclonal Antibody

For Research Use Only. Not for use in diagnostic procedures.