

Anti-Muscleblind Like Protein 1 Monoclonal Antibody

Catalog Number: M02309

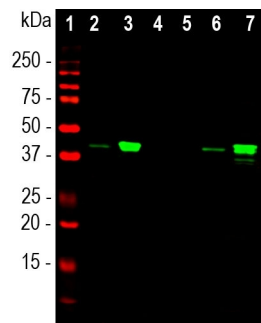
Overview

Product Name	Anti-Muscleblind Like Protein 1 Monoclonal Antibody
Reactive Species	Human
Description	Boster Bio Anti-Muscleblind Like Protein 1 Monoclonal Antibody catalog # M02309. Tested in IF, IHC, WB applications. This antibody reacts with Human.
Application	IF, IHC, WB
Clonality	Monoclonal
Formulation	Purified antibody at 1mg/mL in 50% PBS, 50% glycerol plus 5mM NaN ₃
Storage Instructions	Store at -20°C for one year. For short term storage and frequent use, store at 4°C for up to one month. Avoid repeated freeze-thaw cycles.
Host	Mouse
Uniprot ID	Q9NR56

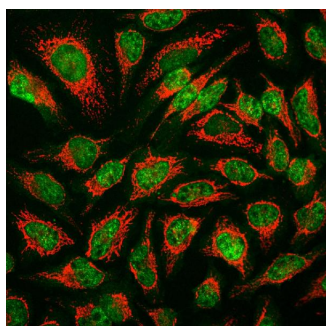
Technical Details

Immunogen	Full-length recombinant human muscleblind-like 1 protein
Concentration	0.5-1mg/ml, actual concentration vary by lot. Use suggested dilution ratio to decide dilution procedure.
Suggested Dilutions	<p>Dilute the sample so that the expected range of concentrations fall within the detection range of this kit.</p> <p>If the expected range of concentration is unknown, a pilot test should be conducted to decide the optimal dilution ratio for your samples.</p> <p>Some PubMed article(s) citing the expression level of this target are as follows:</p> <p>Boster Bio's internal QC testing used:</p> <p>WB: 1:1,000-1:2,000. ICC/IF or IHC: 1:1,000.</p>

Anti-Muscleblind Like Protein 1 Monoclonal Antibody (M02309) Images



Western blot analysis of whole cell lysates, cytosol or nuclear enriched fractions, using mouse mAb to MBNL1, M02309, dilution 1:1,000 in green: [1] protein standard (red), [2] HEK293 cytosol, [3] HEK293 nuclear fraction, [4] NIH-3T3 cytosol, [5] NIH-3T3 nuclear fraction, [6] HeLa cytosol, and [7] HeLa nuclear fraction. The strong band at the 40kDa corresponds to the MBNL1 protein that is predominantly detected in the nuclear enriched fractions. This antibody binds exclusively to the human protein and does not bind the rodent homologue.



Immunofluorescent analysis of HeLa cells stained with mouse mAb to MBNL1, M02309, dilution 1:1,000 in green and chicken pAb to HSP60, dilution 1:5,000, in red. The M02309 antibody specifically labels nuclei, while the other antibody reveals protein expressed in mitochondria.

Submit a product review to Biocompare.com

Submit a review of this product to Biocompare.com to receive a \$20 Amazon.com giftcard! Your reviews help your fellow scientists make the right decisions. Thank you for your contribution.



Anti-Muscleblind Like Protein 1 Monoclonal Antibody