

Anti-delta 1 Catenin/p120 Catenin Rabbit Monoclonal Antibody

Catalog Number: M02333

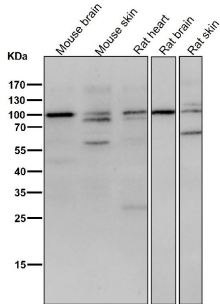
Overview

Product Name	Anti-delta 1 Catenin/p120 Catenin Rabbit Monoclonal Antibody
Reactive Species	Human, Mouse, Rat
Description	Boster Bio Anti-delta 1 Catenin/p120 Catenin Rabbit Monoclonal Antibody catalog # M02333. Tested in WB, IHC, ICC/IF, IP applications. This antibody reacts with Human, Mouse, Rat.
Application	IP, IF, IHC, ICC, WB
Clonality	Monoclonal GI-3
Formulation	Rabbit IgG in phosphate buffered saline, pH 7.4, 150mM NaCl, 0.02% sodium azide and 50% glycerol, 0.4-0.5mg/ml BSA.
Storage Instructions	Store at -20°C for one year. For short term storage and frequent use, store at 4°C for up to one month. Avoid repeated freeze-thaw cycles.
Host	Rabbit
Uniprot ID	O60716

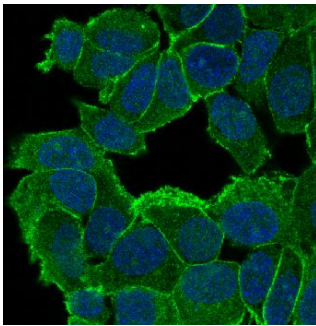
Technical Details

Immunogen	A synthesized peptide derived from human delta 1 Catenin/p120 Catenin
Isotype	Rabbit IgG
Form	Liquid
Concentration	Actual concentration vary by lot. Use suggested dilution ratio to decide dilution procedure.
Purification	Affinity-chromatography
Suggested Dilutions	WB 1:500-1:2000 IHC 1:50-1:100 ICC/IF 1:50-1:100 IP 1:30

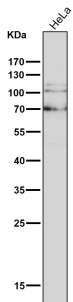
Anti-delta 1 Catenin/p120 Catenin Rabbit Monoclonal Antibody (M02333) Images



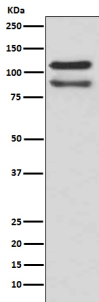
All lanes use the Antibody at 1:3K dilution for 1 hour at room temperature.



Immunofluorescent analysis of MCF-7 cells, using delta 1 Catenin/p120 Catenin Antibody .



All lanes use the Antibody at 1:3K dilution for 1 hour at room temperature.



Western blot analysis of delta1 Catenin expression in HeLa cell lysate.

Submit a product review to Biocompare.com

Submit a review of this product to Biocompare.com to receive a \$20 Amazon.com giftcard! Your reviews help your fellow scientists make the right decisions. Thank you for your contribution.



Anti-delta 1 Catenin/p120 Catenin Rabbit Monoclonal Antibody