

Anti-Pdi1p Protein Disulfide Isomerase Monoclonal Antibody

Catalog Number: M02335

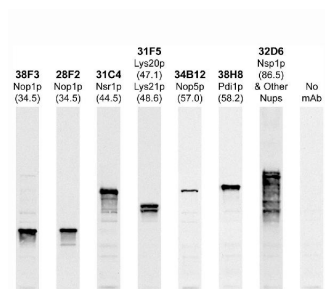
Overview

Product Name	Anti-Pdi1p Protein Disulfide Isomerase Monoclonal Antibody
Reactive Species	Saccharomyces cerevisiae
Description	Boster Bio Anti-Pdi1p Protein Disulfide Isomerase Monoclonal Antibody catalog # M02335. Tested in IP, WB applications. This antibody reacts with Saccharomyces cerevisiae.
Application	IP, WB
Clonality	Monoclonal
Formulation	Antibody is supplied as an aliquot of concentrated tissue culture supernatant.
Storage Instructions	Store at -20°C for one year. For short term storage and frequent use, store at 4°C for up to one month. Avoid repeated freeze-thaw cycles.
Host	Mouse
Uniprot ID	P0A4G2

Technical Details

Immunogen	Yeast nuclear preparations
Concentration	0.5-1mg/ml, actual concentration vary by lot. Use suggested dilution ratio to decide dilution procedure.
Suggested Dilutions	<p>Dilute the sample so that the expected range of concentrations fall within the detection range of this kit.</p> <p>If the expected range of concentration is unknown, a pilot test should be conducted to decide the optimal dilution ratio for your samples.</p> <p>Some PubMed article(s) citing the expression level of this target are as follows:</p> <p>Boster Bio's internal QC testing used:</p> <p>WB: 1:10,000. IF: 1:500-1:1,000</p>

Anti-Pdi1p Protein Disulfide Isomerase Monoclonal Antibody (M02335) Images



Western blots of whole yeast protein extracts with a collection of Boster antibodies directed against yeast proteins. The blot for M02335 is in the indicated lane, 6th from the left, and the number indicates the SDS-PAGE molecular weight in kiloDaltons.

Submit a product review to Biocompare.com

Submit a review of this product to Biocompare.com to receive a \$20 Amazon.com giftcard! Your reviews help your fellow scientists make the right decisions. Thank you for your contribution.



Anti-Pdi1p Protein Disulfide Isomerase Monoclonal Antibody