

## Anti-IMP3 (IGF2BP3) Mouse Monoclonal Antibody [Clone ID: OTI4H5]

Catalog Number: M02362

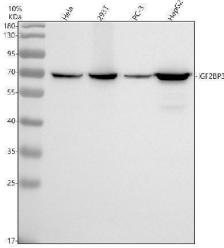
### Overview

Product Name	Anti-IMP3 (IGF2BP3) Mouse Monoclonal Antibody [Clone ID: OTI4H5]
Reactive Species	Human, Mouse, Rat
Description	Boster Bio IGF2BP3 mouse monoclonal antibody, clone OTI4H5. Catalog# M02362. Tested in IHC, WB. This antibody reacts with Human, Mouse, Rat.
Conjugate	Unconjugated
Application	IHC, WB
Clonality	Monoclonal OTI4H5
Formulation	PBS (pH 7.3) containing 1% stabilizing protein, 50% glycerol and 0.02% sodium azide. This antibody is supplied in a stabilized formulation. Compatibility with conjugation reactions depends on the chemistry of the conjugation method used. For conjugation methods that are not compatible with the stabilizing components present in this formulation, a carrier-free antibody format is required.
Storage Instructions	Store at -20°C for one year. For short term storage and frequent use, store at 4°C for up to one month. Avoid repeated freeze-thaw cycles.
Host	Mouse
Uniprot ID	O00425

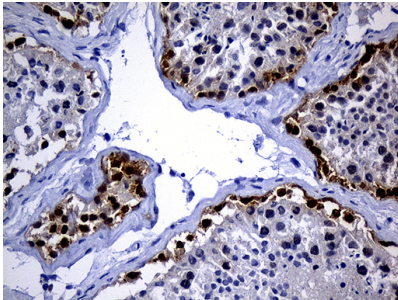
### Technical Details

Immunogen	Full length human recombinant protein of human IGF2BP3 (NP_006538) produced in E.coli.
Isotype	IgG1
Concentration	1 mg/ml
Purification	Purified from mouse ascites fluids or tissue culture supernatant by affinity chromatography (protein A/G)
Suggested Dilutions	WB: 1:500~2000 IHC: 1:250

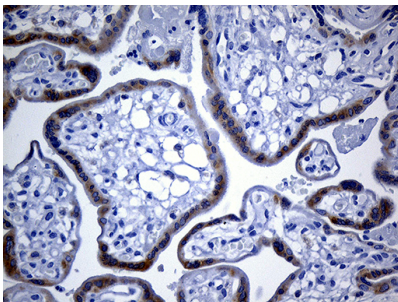
## Anti-IMP3 (IGF2BP3) Mouse Monoclonal Antibody [Clone ID: OTI4H5] (M02362) Images



Western blot analysis of IGF2BP3 using anti-IGF2BP3 antibody (M02362). Electrophoresis was performed on a 10% SDS-PAGE gel at 80V (Stacking gel) / 120V (Resolving gel) for 2 hours. The sample well of each lane was loaded with 30 ug of sample under reducing conditions. Lane 1: human Hela whole cell lysates, Lane 2: human 293T whole cell lysates, Lane 3: human PC-3 whole cell lysates, Lane 4: human HepG2 whole cell lysates. After electrophoresis, proteins were transferred to a nitrocellulose membrane at 150 mA for 50-90 minutes. Blocked the membrane with 5% non-fat milk/TBS for 1.5 hour at RT. The membrane was incubated with mouse anti-IGF2BP3 antigen affinity purified monoclonal antibody (M02362) at 1:500 overnight at 4°C, then washed with TBS-0.1% Tween 3 times with 5 minutes each and probed with a goat anti-mouse IgG-HRP secondary antibody at a dilution of 1:5000 for 1.5 hour at RT. The signal is developed using an ECL Plus Western Blotting Substrate (Catalog # AR1196-200) with Tanon 5200 system. A specific band was detected for IGF2BP3 at approximately 69 kDa. The expected band size for IGF2BP3 is at 69 kDa.



Immunohistochemical staining of paraffin-embedded Human testicle tissue within the normal limits using anti-IGF2BP3 mouse monoclonal antibody. (Heat-induced epitope retrieval by 1mM EDTA in 10mM Tris buffer (pH8.5) at 120°C for 3min)



Immunohistochemical staining of paraffin-embedded Human placenta tissue within the normal limits using anti-IGF2BP3 mouse monoclonal antibody. (Heat-induced epitope retrieval by 1mM EDTA in 10mM Tris buffer (pH8.5) at 120°C for 3min)

Submit a product review to [Biocompare.com](https://www.biocompare.com)

Submit a review of this product to [Biocompare.com](https://www.biocompare.com) to receive a \$20 Amazon.com giftcard! Your reviews help your fellow scientists make the right decisions. Thank you for your contribution.



Anti-IMP3 (IGF2BP3) Mouse Monoclonal Antibody [Clone ID: OTI4H5]

For Research Use Only. Not for use in diagnostic procedures.