

## Anti-Leukotriene A4 hydrolase (LTA4H) Mouse Monoclonal Antibody [Clone ID: OTI8F4]

Catalog Number: M02399-1

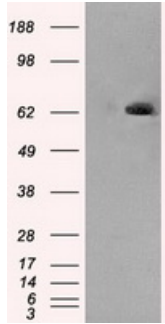
### Overview

Product Name	Anti-Leukotriene A4 hydrolase (LTA4H) Mouse Monoclonal Antibody [Clone ID: OTI8F4]
Reactive Species	Dog, Human, Mouse, Rat
Description	Boster Bio Anti-LTA4H (Leukotriene A4 hydrolase) mouse monoclonal antibody, clone OTI8F4 (formerly 8F4). Catalog# M02399-1. Tested in IF, IHC, IP, WB. This antibody reacts with Human, Mouse, Rat, Dog.
Application	IP, IF, IHC, WB
Clonality	Monoclonal OTI8F4
Formulation	PBS (pH 7.3) containing 1% BSA, 50% glycerol and 0.02% sodium azide.
Storage Instructions	Store at -20°C as received.
Host	Mouse
Uniprot ID	P09960

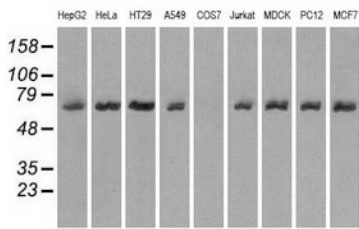
### Technical Details

Immunogen	Full-length protein expressed in 293T cell transfected with human LTA4H expression vector
Isotype	IgG2a
Concentration	1.3 mg/ml
Purification	Purified from mouse ascites fluids or tissue culture supernatant by affinity chromatography (protein A/G)
Suggested Dilutions	Dilute the sample so that the expected range of concentrations fall within the detection range of this kit. If the expected range of concentration is unknown, a pilot test should be conducted to decide the optimal dilution ratio for your samples. Some PubMed article(s) citing the expression level of this target are as follows:

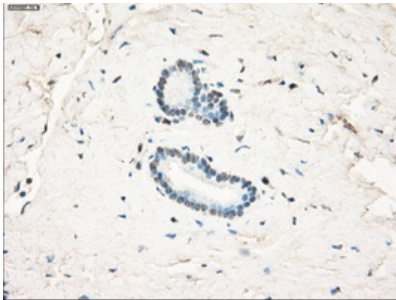
## Anti-Leukotriene A4 hydrolase (LTA4H) Mouse Monoclonal Antibody [Clone ID: OTI8F4] (M02399-1) Images



HEK293T cells were transfected with the pCMV6-ENTRY control (Left lane) or pCMV6-ENTRY LTA4H (Right lane) cDNA for 48 hrs and lysed. Equivalent amounts of cell lysates (5 ug per lane) were separated by SDS-PAGE and immunoblotted with anti-LTA4H.



Western blot analysis of extracts (35ug) from 9 different cell lines by using anti-LTA4H monoclonal antibody.



Immunohistochemical staining of paraffin-embedded pancreas tissue within the normal limits using anti-LTA4H mouse monoclonal antibody. (Heat-induced epitope retrieval by 10mM citric buffer)

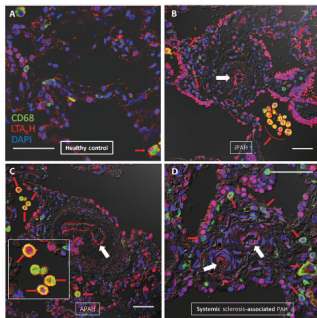
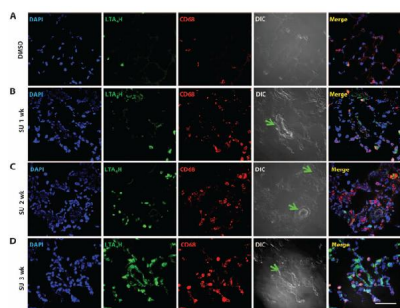


Figure from citation: Immunofluorescence of LTA4H protein level by using anti-LTA4H antibody in human lung tissues.

Figure from citation: Immunofluorescence of LTA4H protein level by using anti-LTA4H antibody in human lung tissues.



## Submit a product review to Biocompare.com

Submit a review of this product to Biocompare.com to receive a \$20 Amazon.com giftcard! Your reviews help your fellow scientists make the right decisions. Thank you for your contribution.



Anti-Leukotriene A4 hydrolase (LTA4H) Mouse Monoclonal Antibody [Clone ID: OT18F4]