

Anti-PCAF Monoclonal Antibody

Catalog Number: M02403

About KAT2B

F-actin cross-linking protein which is thought to anchor actin to a variety of intracellular structures. This is a bundling protein. Probably involved in vesicular trafficking via its association with the CART complex. The CART complex is necessary for efficient transferrin receptor recycling but not for EGFR degradation.

Overview

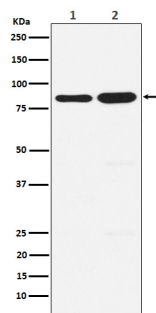
Product Name	Anti-PCAF Monoclonal Antibody
Reactive Species	Human, Mouse, Rat
Description	Boster Bio Anti-PCAF Monoclonal Antibody catalog # M02403. Tested in WB, IP, Flow Cytometry applications. This antibody reacts with Human, Mouse, Rat.
Conjugate	FITC
Application	Flow Cytometry, IP, WB
Clonality	Monoclonal AEHI-11
Formulation	Rabbit IgG in phosphate buffered saline, pH 7.4, 150mM NaCl, 0.02% sodium azide and 50% glycerol, 0.4-0.5mg/ml BSA.
Storage Instructions	Store at -20°C for one year. For short term storage and frequent use, store at 4°C for up to one month. Avoid repeated freeze-thaw cycles.
Host	Rabbit
Uniprot ID	Q92831

Technical Details

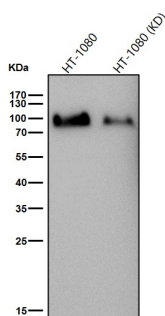
Immunogen	A synthesized peptide derived from human KAT2B / PCAF Functions as a histone acetyltransferase (HAT) to promote transcriptional activation. Has significant histone acetyltransferase activity with core histones (H3 and H4), and also with nucleosome core particles. Inhibits cell-cycle progression and counteracts the mitogenic activity of the adenoviral oncoprotein E1A.
Predicted Reactive Species	Human, Primate
Cross Reactivity	Detects ~20kDa. Does not cross-react with alphaB-crystallin, betaL-crystallin, ̢H- crystallin, gamma-crystallin, HSP25, HSP27 or HSP47 proteins.
Isotype	Rabbit IgG
Form	Liquid

Concentration	Actual concentration vary by lot. Use suggested dilution ratio to decide dilution procedure.
Purification	Affinity-chromatography
Suggested Dilutions	<p>Dilute the sample so that the expected range of concentrations fall within the detection range of this kit.</p> <p>If the expected range of concentration is unknown, a pilot test should be conducted to decide the optimal dilution ratio for your samples.</p> <p>Some PubMed article(s) citing the expression level of this target are as follows:</p> <p>Boster Bio's internal QC testing used:</p> <p>WB 1:500-1:2000</p> <p>IP 1:50</p> <p>FC 1:50</p>

Anti-PCAF Monoclonal Antibody (M02403) Images



Western blot analysis of KAT2B / PCAF expression in (1) A431 cell lysate; (2) NIH/3T3 cell lysate.



All lanes use the Antibody at 1:1K dilution for 1 hour at room temperature.

Submit a product review to Biocompare.com

Submit a review of this product to Biocompare.com to receive a \$20 Amazon.com giftcard! Your reviews help your fellow scientists make the right decisions. Thank you for your contribution.



Anti-PCAF Monoclonal Antibody