

## Anti-CK7 (Cytokeratin-7) KRT7 Rabbit Monoclonal Antibody, Clone#RM284

Catalog Number: M02416-3

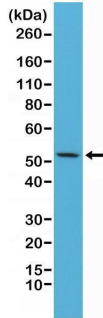
### Overview

Product Name	Anti-CK7 (Cytokeratin-7) KRT7 Rabbit Monoclonal Antibody, Clone#RM284
Reactive Species	Human
Description	Boster Bio Anti-CK7 (Cytokeratin-7) KRT7 Rabbit Monoclonal Antibody, Clone#RM284 (Catalog # M02416-3). Tested in IHC, WB applications. This antibody reacts with Human.
Application	IHC, WB
Clonality	Monoclonal RM284
Formulation	50% Glycerol/PBS with 1% stabilizing protein and 0.09% sodium azide This antibody is supplied in a stabilized formulation. Compatibility with conjugation reactions depends on the chemistry of the conjugation method used. For conjugation methods that are not compatible with the stabilizing components present in this formulation, a carrier-free antibody format is required.
Storage Instructions	Store at -20°C for one year. Avoid repeated freeze-thaw cycles.
Host	Rabbit
Uniprot ID	P08729

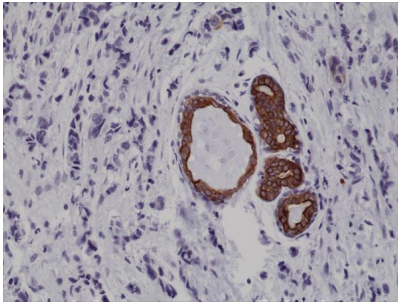
### Technical Details

Immunogen	A peptide corresponding to the C-terminus of human Cytokeratin-7.
Cross Reactivity	This antibody reacts to human CK7 (Cytokeratin-7).
Isotype	Rabbit IgG
Form	Liquid
Concentration	0.5-1mg/ml, actual concentration vary by lot. Use suggested dilution ratio to decide dilution procedure.
Purification	Protein A affinity purified from an animal origin-free culture supernatant
Suggested Dilutions	Immunohistochemistry (IHC): 1:200-1:1000 dilution WB: 1:1000-1:2500 dilution.

## Anti-CK7 (Cytokeratin-7) KRT7 Rabbit Monoclonal Antibody, Clone#RM284 (M02416-3) Images



Western Blotting result Western Blot of HeLa cells lysates using Anti-CK7 Rabbit Monoclonal Antibody (Clone RM284) at a 1:2500 dilution.



IHC result Immunohistochemical staining of formalin fixed and paraffin embedded human breast cancer tissue sections using Anti-CK7 Rabbit Monoclonal Antibody (Clone RM284) at a 1:1000 dilution.

### 1 Publications Citing This Product

1. PubMed ID: 29048644, Bu S, Zhang Q, Wang Q, Lai D. Int J Oncol. 2017 Nov;51(5):1405-1414. doi: 10.3892/ijo.2017.4123. Epub 2017 Sep 14. Human amniotic epithelial cells inhibit growth of epithelial ovarian cancer cells via TGF-beta1-mediated cell cycle arrest

Visit [bosterbio.com/anti-ck7-cytokeratin-7-rabbit-monoclonal-antibody-clone-rm284-m02416-3-boster.html](http://bosterbio.com/anti-ck7-cytokeratin-7-rabbit-monoclonal-antibody-clone-rm284-m02416-3-boster.html) to see all 1 publications.

### Submit a product review to Biocompare.com

Submit a review of this product to Biocompare.com to receive a \$20 Amazon.com giftcard! Your reviews help your fellow scientists make the right decisions. Thank you for your contribution.



Anti-CK7 (Cytokeratin-7) KRT7 Rabbit Monoclonal Antibody, Clone#RM284

For Research Use Only. Not for use in diagnostic procedures.