

Anti-BAG-1L Rabbit Monoclonal Antibody, Clone#RM310

Catalog Number: M02423

Overview

Product Name	Anti-BAG-1L Rabbit Monoclonal Antibody, Clone#RM310
Reactive Species	Human
Description	Boster Bio Anti-BAG-1L Rabbit Monoclonal Antibody, Clone#RM310 (Catalog # M02423). Tested in IHC, WB, ICC applications. This antibody reacts with Human.
Application	IHC, ICC, WB
Clonality	Monoclonal RM310
Formulation	50% Glycerol/PBS with 1% BSA and 0.09% sodium azide
Storage Instructions	Store at -20°C for one year. Avoid repeated freeze-thaw cycles.
Host	Rabbit
Uniprot ID	Q99933

Technical Details

Immunogen	A peptide corresponding to residues near the N-terminus of human BAG-1L
Cross Reactivity	This antibody reacts to human BAG-1L. It does not cross-react to BAG-1M or BAG-1S.
Isotype	Rabbit IgG
Form	Liquid
Concentration	0.5-1mg/ml, actual concentration vary by lot. Use suggested dilution ratio to decide dilution procedure.
Purification	Protein A affinity purified from an animal origin-free culture supernatant
Suggested Dilutions	<p>Dilute the sample so that the expected range of concentrations fall within the detection range of this kit.</p> <p>If the expected range of concentration is unknown, a pilot test should be conducted to decide the optimal dilution ratio for your samples.</p> <p>Some PubMed article(s) citing the expression level of this target are as follows:</p> <p>Boster Bio's internal QC testing used:</p> <p>Immunohistochemistry (IHC): 1:500-1:2000 dilution</p> <p>WB: 1:1000-1:2000 dilution</p> <p>Immunocytochemistry (ICC): 1:200-1:1000 dilution</p>

Anti-BAG-1L Rabbit Monoclonal Antibody, Clone#RM310 (M02423) Images

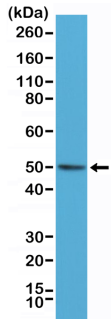


Figure 1. Western Blotting result
Western Blot of HeLa cell lysate, using anti-BAG-1L rabbit monoclonal antibody (Clone RM310) at a 1:1000 dilution.

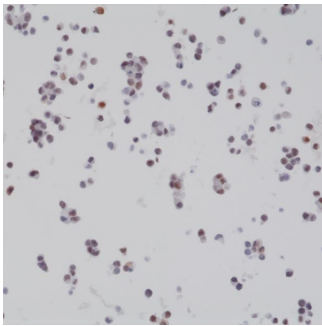


Figure 2. IHC result
Immunohistochemical staining of formalin fixed and paraffin embedded 22RV1 cell section using anti-BAG-1L rabbit monoclonal antibody (Clone RM310) at a 1:2000 dilution.

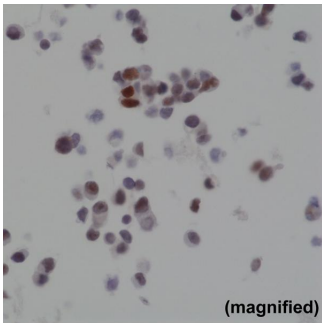


Figure 3. IHC result
Immunohistochemical staining of formalin fixed and paraffin embedded 22RV1 cell section using anti-BAG-1L rabbit monoclonal antibody (Clone RM310) at a 1:2000 dilution.

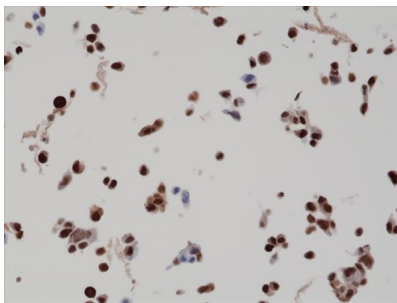


Figure 4. IHC result
Immunohistochemical staining of formalin fixed and paraffin embedded BAG-1L overexpressing LNCaP cell section using anti-BAG-1L rabbit monoclonal antibody (Clone RM310) at a 1:2000 dilution.

1 Publications Citing This Product

1. PubMed ID: 17657847, Bai Yx, Yi JI, Li Jf, Sui H. World J Gastroenterol. 2007 Jul 28;13(28):3883-5. Clinicopathologic Significance Of Bag1 And Timp3 Expression In Colon Carcinoma.

Visit bosterbio.com/anti-bag-1l-rabbit-monoclonal-antibody-clone-rm310-m02423-boster.html to see all 1 publications.

Submit a product review to Biocompare.com

Submit a review of this product to Biocompare.com to receive a \$20 Amazon.com giftcard! Your reviews help your fellow scientists make the right decisions. Thank you for your contribution.



Anti-BAG-1L Rabbit Monoclonal Antibody, Clone#RM310