

Anti-NHERF1 Purified SLC9A3R1 Monoclonal Antibody

Catalog Number: M02427-1

About SLC9A3R1

NHERF1 (Na⁺/H⁺ exchanger regulatory factor 1), also known as EBP50 (ezrin, radixin, moesin-binding phosphoprotein 50) is an adaptor protein, which associates with beta-catenin and is required for its localization at the cell-cell junctions, interacts with various G protein-coupled receptors and regulates their traffic, as well as sodium-hydrogen exchange and sodium-dependent phosphate transport. NHERF1/EBP50 inhibits cell motility and is required to suppress anchorage-independent growth. It contains C-terminal ERM (ezrin, radixin, moesin)-binding region and two N-terminal PDZ (postsynaptic-density-95/disc-large/ZO1 homology) domains and is able to form head-to-tail intramolecular conformation to regulate its interactions.

Overview

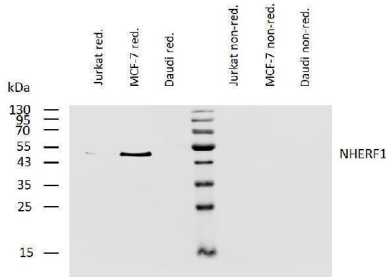
Product Name	Anti-NHERF1 Purified SLC9A3R1 Monoclonal Antibody
Reactive Species	Human
Description	Boster Bio Anti-NHERF1 Purified SLC9A3R1 Monoclonal Antibody (Catalog# M02427-1). Tested in IP, WB, IHC-P application(s). This antibody reacts with Human.
Application	IP, IHC-P, WB
Clonality	Monoclonal EBP-10
Formulation	Phosphate buffered saline (PBS), pH 7.4, 15 mM sodium azide
Storage Instructions	Store at 2-8°C. Do not freeze.
Host	Mouse
Uniprot ID	O14745

Technical Details

Immunogen	Bacterially produced recombinant full-length human NHERF1. The mouse monoclonal antibody EBP-10 reacts with NHERF1/EBP50 phosphoprotein of 50 kDa, which serves as an adaptor and regulator protein.
Predicted Reactive Species	Primate
Cross Reactivity	This antibody does not cross-react with Thy-1.1 alloantigen.
Isotype	Mouse IgG1 kappa
Form	Liquid
Concentration	1 mg/ml

Purification	Purified by protein-A affinity chromatography.
Suggested Dilutions	Immunohistochemistry (paraffin sections): 5 ug/ml. Western blotting: 2 ug/ml, reducing conditions, positive control: MCF-7 cell line

Anti-NHERF1 Purified SLC9A3R1 Monoclonal Antibody (M02427-1) Images



Western blotting analysis of human NHERF1 using mouse monoclonal antibody EBP-10 on lysates of Jurkat, MCF-7, and Daudi cells under reducing and non-reducing conditions. Nitrocellulose membrane was probed with 2 µg/ml of mouse anti-NHERF1 monoclonal antibody followed by IRDye800-conjugated anti-mouse secondary antibody. NHERF1 was detected around 50 kDa.

Submit a product review to Biocompare.com

Submit a review of this product to Biocompare.com to receive a \$20 Amazon.com giftcard! Your reviews help your fellow scientists make the right decisions. Thank you for your contribution.



Anti-NHERF1 Purified SLC9A3R1 Monoclonal Antibody

For Research Use Only. Not for use in diagnostic procedures.