

## Anti-BMF Mouse Monoclonal Antibody [Clone ID: OTI6F3]

Catalog Number: M02432

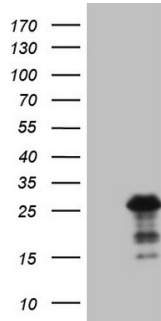
### Overview

Product Name	Anti-BMF Mouse Monoclonal Antibody [Clone ID: OTI6F3]
Reactive Species	Human, Mouse, Rat
Description	Boster Bio BMF mouse monoclonal antibody, clone OTI6F3 (formerly 6F3). Catalog# M02432. Tested in IHC, WB. This antibody reacts with Human, Mouse, Rat.
Application	IHC, WB
Clonality	Monoclonal OTI6F3
Formulation	PBS (PH 7.3) containing 1% BSA, 50% glycerol and 0.02% sodium azide.
Storage Instructions	Store at -20°C as received.
Host	Mouse
Uniprot ID	Q96LC9

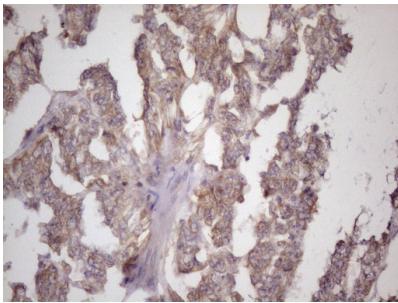
### Technical Details

Immunogen	Full length human recombinant protein of human BMF ( NP_001003940) produced in E.coli.
Isotype	IgG2b
Concentration	1 mg/ml
Purification	Purified from mouse ascites fluids or tissue culture supernatant by affinity chromatography (protein A/G)
Suggested Dilutions	Dilute the sample so that the expected range of concentrations fall within the detection range of this kit. If the expected range of concentration is unknown, a pilot test should be conducted to decide the optimal dilution ratio for your samples. Some PubMed article(s) citing the expression level of this target are as follows:  For protocols, please visit <a href="https://www.bosterbio.com/protocol-and-troubleshooting/">https://www.bosterbio.com/protocol-and-troubleshooting/</a>

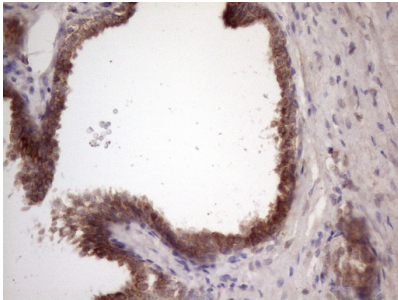
## Anti-BMF Mouse Monoclonal Antibody [Clone ID: OTI6F3] (M02432) Images



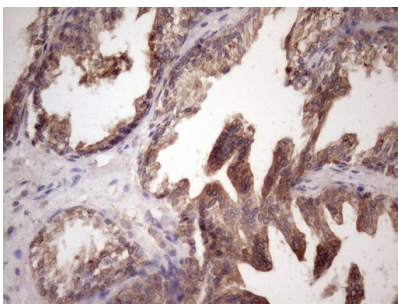
HEK293T cells were transfected with the pCMV6-ENTRY control (Left lane) or pCMV6-ENTRY BMF (Right lane) cDNA for 48 hrs and lysed. Equivalent amounts of cell lysates (5 ug per lane) were separated by SDS-PAGE and immunoblotted with anti-BMF (1:2000).



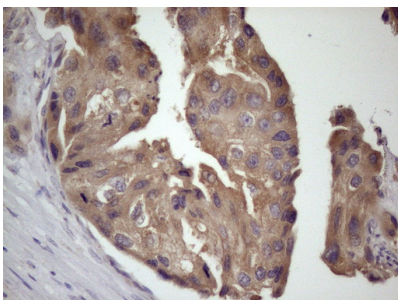
Immunohistochemical staining of paraffin-embedded Adenocarcinoma of Human endometrium tissue using anti-BMF mouse monoclonal antibody. (Heat-induced epitope retrieval by 1 mM EDTA in 10mM Tris)



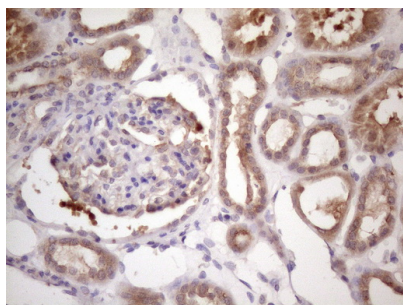
Immunohistochemical staining of paraffin-embedded Human prostate tissue within the normal limits using anti-BMF mouse monoclonal antibody. (Heat-induced epitope retrieval by 1 mM EDTA in 10mM Tris)



Immunohistochemical staining of paraffin-embedded Carcinoma of Human prostate tissue using anti-BMF mouse monoclonal antibody. (Heat-induced epitope retrieval by 1 mM EDTA in 10mM Tris)



Immunohistochemical staining of paraffin-embedded Adenocarcinoma of Human breast tissue using anti-BMF mouse monoclonal antibody. (Heat-induced epitope retrieval by 1 mM EDTA in 10mM Tris)



Immunohistochemical staining of paraffin-embedded Human Kidney tissue within the normal limits using anti-BMF mouse monoclonal antibody. (Heat-induced epitope retrieval by 1 mM EDTA in 10mM Tris)

## Submit a product review to Biocompare.com

Submit a review of this product to Biocompare.com to receive a \$20 Amazon.com giftcard! Your reviews help your fellow scientists make the right decisions. Thank you for your contribution.



Anti-BMF Mouse Monoclonal Antibody [Clone ID: OTI6F3]