

Anti-IL3 Mouse Monoclonal Antibody [Clone ID: OTI3B11]

Catalog Number: M02435-1

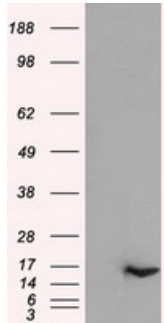
Overview

Product Name	Anti-IL3 Mouse Monoclonal Antibody [Clone ID: OTI3B11]
Reactive Species	Human
Description	Boster Bio IL-3 mouse monoclonal antibody, clone OTI3B11 (formerly 3B11). Catalog# M02435-1. Tested in IF, IHC, WB. This antibody reacts with Human.
Application	IF, IHC, WB
Clonality	Monoclonal OTI3B11
Formulation	PBS (pH 7.3) containing 1% stabilizing protein, 50% glycerol and 0.02% sodium azide. This antibody is supplied in a stabilized formulation. Compatibility with conjugation reactions depends on the chemistry of the conjugation method used. For conjugation methods that are not compatible with the stabilizing components present in this formulation, a carrier-free antibody format is required.
Storage Instructions	Store at -20°C as received.
Host	Mouse
Uniprot ID	P08700

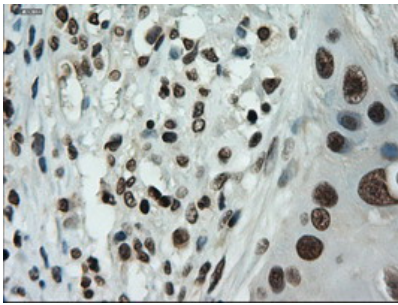
Technical Details

Immunogen	Human recombinant protein fragment corresponding to amino acids 20-152 of human IL-3 (NP_000579) produced in E.coli.
Isotype	IgG1
Concentration	1 mg/ml
Purification	Purified from mouse ascites fluids or tissue culture supernatant by affinity chromatography (protein A/G)
Suggested Dilutions	WB 1:500 IHC 1:50 IF 1:100

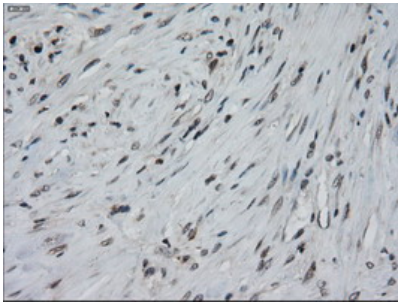
Anti-IL3 Mouse Monoclonal Antibody [Clone ID: OTI3B11] (M02435-1) Images



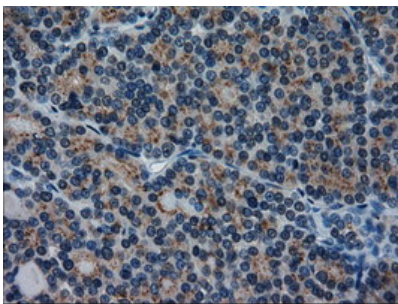
HEK293T cells were transfected with the pCMV6-ENTRY control (Left lane) or pCMV6-ENTRY IL-3 (Right lane) cDNA for 48 hrs and lysed. Equivalent amounts of cell lysates (5 ug per lane) were separated by SDS-PAGE and immunoblotted with anti-IL-3.



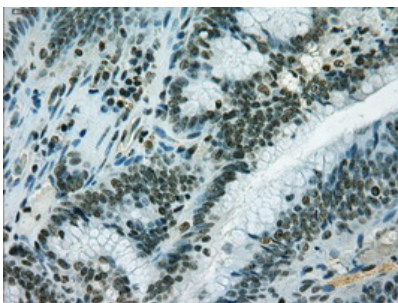
Immunohistochemical staining of paraffin-embedded Carcinoma of Human lung tissue using anti-IL-3 mouse monoclonal antibody. (Heat-induced epitope retrieval by 10mM citric buffer)



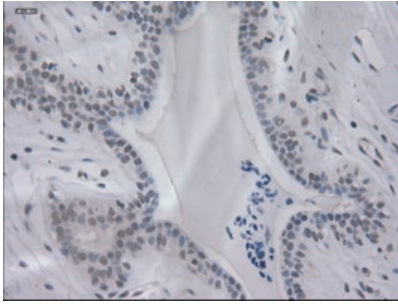
Immunohistochemical staining of paraffin-embedded Carcinoma of Human pancreas tissue using anti-IL-3 mouse monoclonal antibody. (Heat-induced epitope retrieval by 10mM citric buffer)



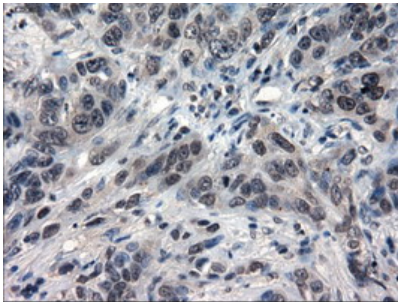
Immunohistochemical staining of paraffin-embedded Carcinoma of Human thyroid tissue using anti-IL-3 mouse monoclonal antibody. (Heat-induced epitope retrieval by 10mM citric buffer)



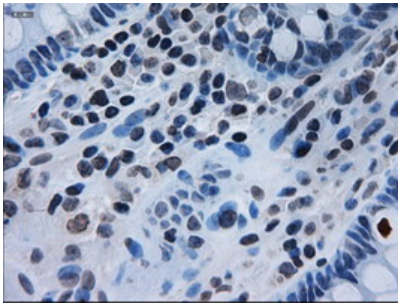
Immunohistochemical staining of paraffin-embedded Adenocarcinoma of Human endometrium tissue using anti-IL-3 mouse monoclonal antibody. (Heat-induced epitope retrieval by 10mM citric buffer)



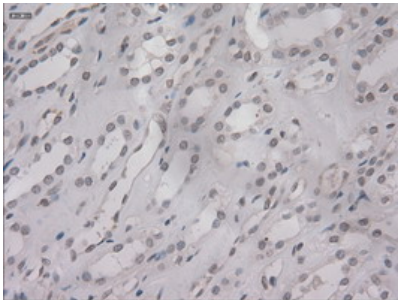
Immunohistochemical staining of paraffin-embedded Human breast tissue within the normal limits using anti-IL-3 mouse monoclonal antibody. (Heat-induced epitope retrieval by 10mM citric buffer)



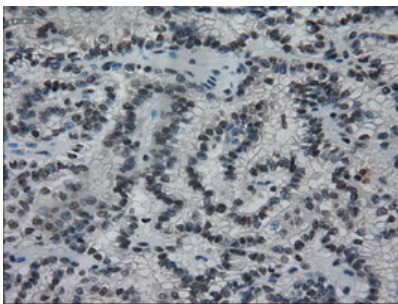
Immunohistochemical staining of paraffin-embedded Adenocarcinoma of Human breast tissue using anti-IL-3 mouse monoclonal antibody. (Heat-induced epitope retrieval by 10mM citric buffer)



Immunohistochemical staining of paraffin-embedded Human colon tissue within the normal limits using anti-IL-3 mouse monoclonal antibody. (Heat-induced epitope retrieval by 10mM citric buffer)

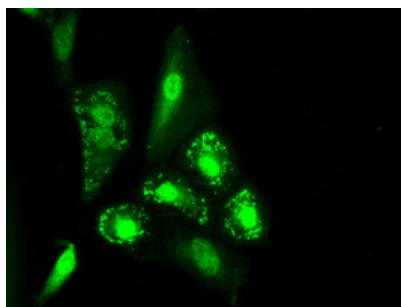


Immunohistochemical staining of paraffin-embedded Human Kidney tissue within the normal limits using anti-IL-3 mouse monoclonal antibody. (Heat-induced epitope retrieval by 10mM citric buffer)



Immunohistochemical staining of paraffin-embedded Carcinoma of Human kidney tissue using anti-IL-3 mouse monoclonal antibody. (Heat-induced epitope retrieval by 10mM citric buffer)

Immunofluorescent staining of A549 cells using anti-IL-3 mouse monoclonal antibody (M02435-1).



Submit a product review to Biocompare.com

Submit a review of this product to Biocompare.com to receive a \$20 Amazon.com giftcard! Your reviews help your fellow scientists make the right decisions. Thank you for your contribution.



Anti-IL3 Mouse Monoclonal Antibody [Clone ID: OTI3B11]

For Research Use Only. Not for use in diagnostic procedures.