

Anti-ApoM Rabbit Monoclonal Antibody

Catalog Number: M02451-2

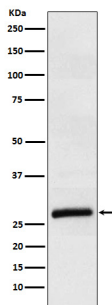
Overview

Product Name	Anti-ApoM Rabbit Monoclonal Antibody
Reactive Species	Human
Description	Boster Bio Anti-ApoM Rabbit Monoclonal Antibody catalog # M02451-2. Tested in WB, IHC, FC applications. This antibody reacts with Human.
Application	Flow Cytometry, IHC, WB
Clonality	Monoclonal 23A72
Formulation	Rabbit IgG in phosphate buffered saline, pH 7.4, 150mM NaCl, 0.02% sodium azide and 50% glycerol, 0.4-0.5mg/ml BSA.
Storage Instructions	Store at -20°C for one year. For short term storage and frequent use, store at 4°C for up to one month. Avoid repeated freeze-thaw cycles.
Host	Rabbit
Uniprot ID	O95445

Technical Details

Immunogen	A synthesized peptide derived from human ApoM
Isotype	IgG
Form	Liquid
Concentration	Actual concentration vary by lot. Use suggested dilution ratio to decide dilution procedure.
Purification	Affinity-chromatography
Suggested Dilutions	<p>Dilute the sample so that the expected range of concentrations fall within the detection range of this kit.</p> <p>If the expected range of concentration is unknown, a pilot test should be conducted to decide the optimal dilution ratio for your samples.</p> <p>Some PubMed article(s) citing the expression level of this target are as follows: Boster Bio's internal QC testing used WB 1:500-1:2000 IHC 1:50-1:200 FC 1:60</p> <p>For protocols, please visit https://www.bosterbio.com/protocol-and-troubleshooting/</p>

Anti-ApoM Rabbit Monoclonal Antibody (M02451-2) Images



Western blot analysis of ApoM expression in Human plasma lysate.

Submit a product review to Biocompare.com

Submit a review of this product to Biocompare.com to receive a \$20 Amazon.com giftcard! Your reviews help your fellow scientists make the right decisions. Thank you for your contribution.



Anti-ApoM Rabbit Monoclonal Antibody