

## Anti-TLE 1 (TLE1) Mouse Monoclonal Antibody [Clone ID: OTI1H2]

Catalog Number: M02460-1

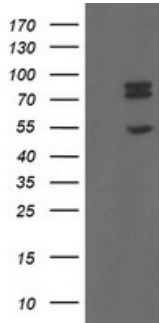
### Overview

Product Name	Anti-TLE 1 (TLE1) Mouse Monoclonal Antibody [Clone ID: OTI1H2]
Reactive Species	Human, Mouse, Rat
Description	Boster Bio TLE1 mouse monoclonal antibody, clone OTI1H2 (formerly 1H2). Catalog# M02460-1. Tested in FC, IF, IHC, WB. This antibody reacts with Human, Mouse, Rat.
Application	Flow Cytometry, IF, IHC, WB
Clonality	Monoclonal OTI1H2
Formulation	PBS (pH 7.3) containing 1% stabilizing protein, 50% glycerol and 0.02% sodium azide. This antibody is supplied in a stabilized formulation. Compatibility with conjugation reactions depends on the chemistry of the conjugation method used. For conjugation methods that are not compatible with the stabilizing components present in this formulation, a carrier-free antibody format is required.
Storage Instructions	Store at -20°C as received.
Host	Mouse
Uniprot ID	Q04724

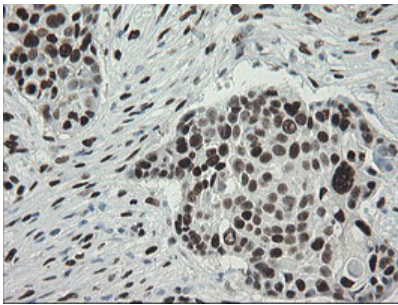
### Technical Details

Immunogen	Human recombinant protein fragment corresponding to amino acids 180-460 of human TLE1 (NP_005068) produced in E.coli.
Isotype	IgG2b
Concentration	1 mg/ml
Purification	Purified from mouse ascites fluids or tissue culture supernatant by affinity chromatography (protein A/G)
Suggested Dilutions	WB 1:2000 IHC 1:150 IF 1:100 Flow Cytometry 1:100

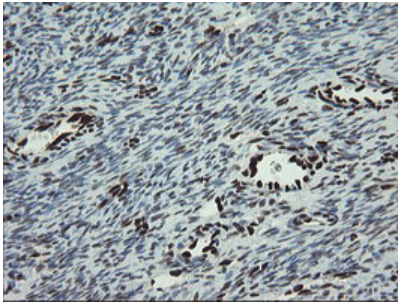
## Anti-TLE 1 (TLE1) Mouse Monoclonal Antibody [Clone ID: OTI1H2] (M02460-1) Images



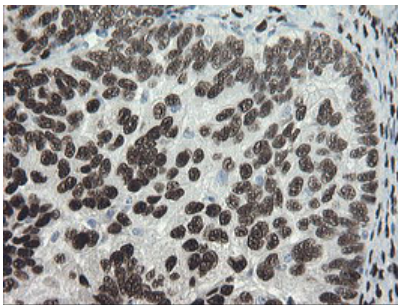
HEK293T cells were transfected with the pCMV6-ENTRY control (Left lane) or pCMV6-ENTRY TLE1 (Right lane) cDNA for 48 hrs and lysed. Equivalent amounts of cell lysates (5 ug per lane) were separated by SDS-PAGE and immunoblotted with anti-TLE1.



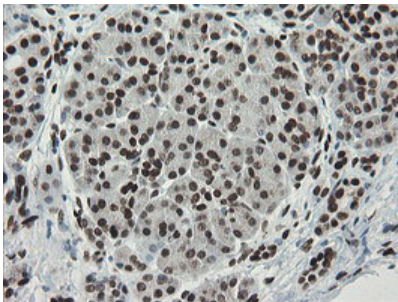
Immunohistochemical staining of paraffin-embedded Carcinoma of Human lung tissue using anti-TLE1 mouse monoclonal antibody. (Heat-induced epitope retrieval by 10mM citric buffer)



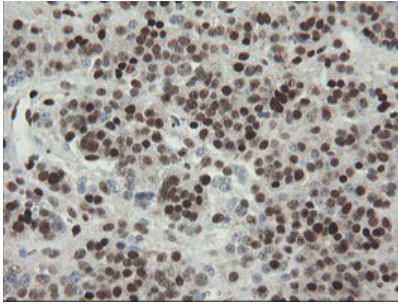
Immunohistochemical staining of paraffin-embedded Human Ovary tissue within the normal limits using anti-TLE1 mouse monoclonal antibody. (Heat-induced epitope retrieval by 10mM citric buffer)



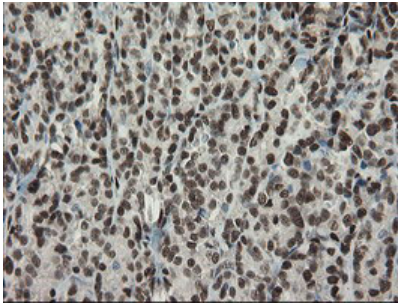
Immunohistochemical staining of paraffin-embedded Adenocarcinoma of Human ovary tissue using anti-TLE1 mouse monoclonal antibody. (Heat-induced epitope retrieval by 10mM citric buffer)



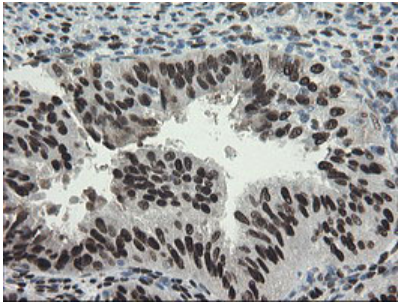
Immunohistochemical staining of paraffin-embedded Human pancreas tissue within the normal limits using anti-TLE1 mouse monoclonal antibody. (Heat-induced epitope retrieval by 10mM citric buffer)



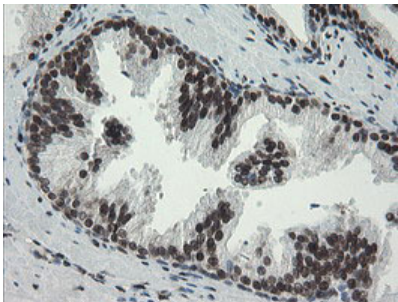
Immunohistochemical staining of paraffin-embedded Carcinoma of Human pancreas tissue using anti-TLE1 mouse monoclonal antibody. (Heat-induced epitope retrieval by 10mM citric buffer)



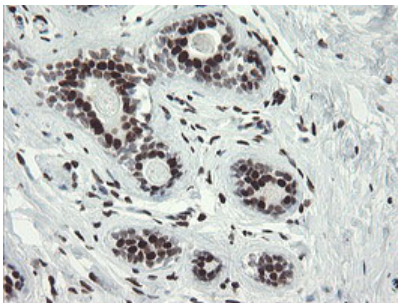
Immunohistochemical staining of paraffin-embedded Carcinoma of Human thyroid tissue using anti-TLE1 mouse monoclonal antibody. (Heat-induced epitope retrieval by 10mM citric buffer)



Immunohistochemical staining of paraffin-embedded Adenocarcinoma of Human endometrium tissue using anti-TLE1 mouse monoclonal antibody. (Heat-induced epitope retrieval by 10mM citric buffer)

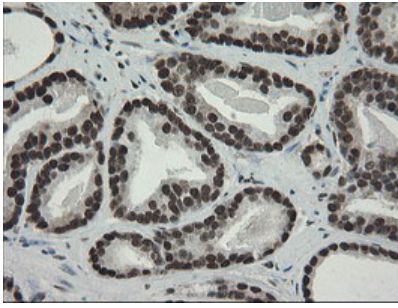


Immunohistochemical staining of paraffin-embedded Human prostate tissue within the normal limits using anti-TLE1 mouse monoclonal antibody. (Heat-induced epitope retrieval by 10mM citric buffer)

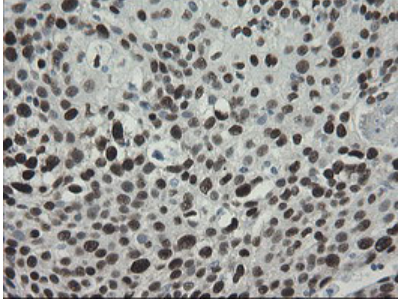


Immunohistochemical staining of paraffin-embedded Human breast tissue within the normal limits using anti-TLE1 mouse monoclonal antibody. (Heat-induced epitope retrieval by 10mM citric buffer)

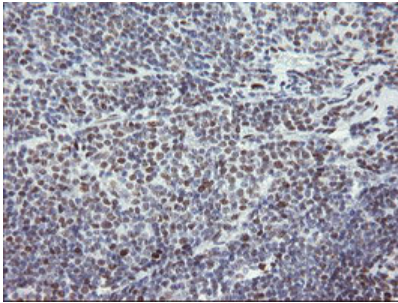
Immunohistochemical staining of paraffin-embedded Carcinoma of Human prostate tissue using anti-TLE1 mouse



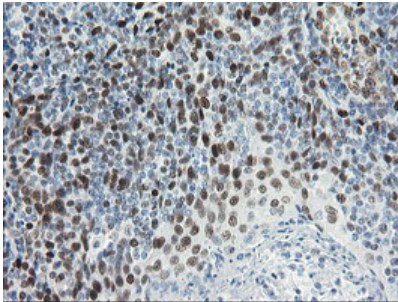
monoclonal antibody. (Heat-induced epitope retrieval by 10mM citric buffer)



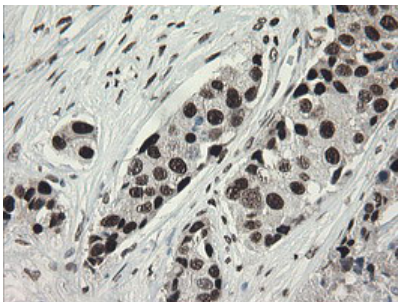
Immunohistochemical staining of paraffin-embedded Carcinoma of Human bladder tissue using anti-TLE1 mouse monoclonal antibody. (Heat-induced epitope retrieval by 10mM citric buffer)



Immunohistochemical staining of paraffin-embedded Human lymphoma tissue using anti-TLE1 mouse monoclonal antibody. (Heat-induced epitope retrieval by 10mM citric buffer)

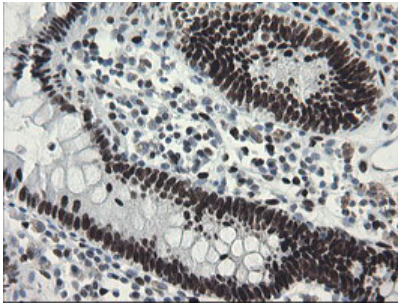


Immunohistochemical staining of paraffin-embedded Human tonsil within the normal limits using anti-TLE1 mouse monoclonal antibody. (Heat-induced epitope retrieval by 10mM citric buffer)

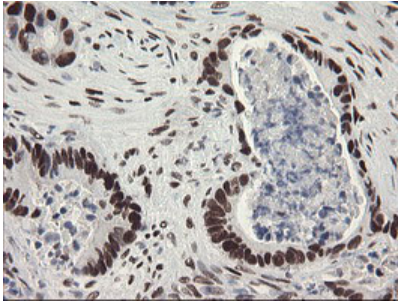


Immunohistochemical staining of paraffin-embedded Adenocarcinoma of Human breast tissue using anti-TLE1 mouse monoclonal antibody. (Heat-induced epitope retrieval by 10mM citric buffer)

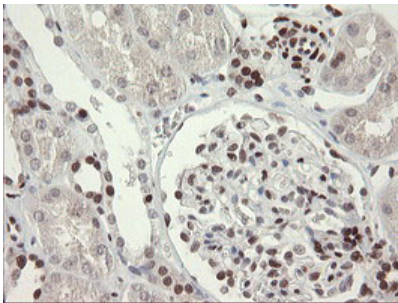
Immunohistochemical staining of paraffin-embedded Human colon tissue within the normal limits using anti-TLE1 mouse



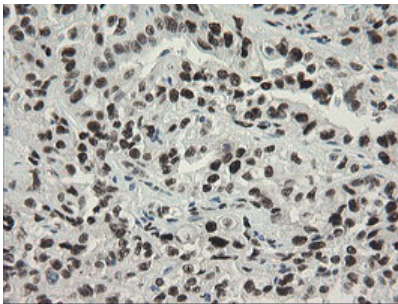
monoclonal antibody. (Heat-induced epitope retrieval by 10mM citric buffer)



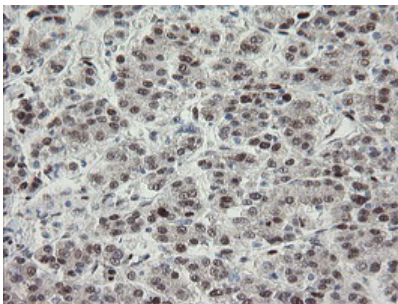
Immunohistochemical staining of paraffin-embedded Adenocarcinoma of Human colon tissue using anti-TLE1 mouse monoclonal antibody. (Heat-induced epitope retrieval by 10mM citric buffer)



Immunohistochemical staining of paraffin-embedded Human Kidney tissue within the normal limits using anti-TLE1 mouse monoclonal antibody. (Heat-induced epitope retrieval by 10mM citric buffer)

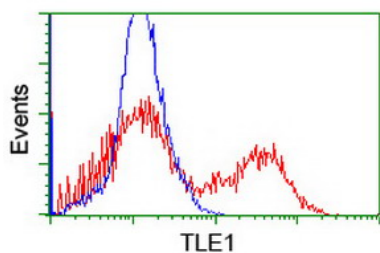


Immunohistochemical staining of paraffin-embedded Carcinoma of Human kidney tissue using anti-TLE1 mouse monoclonal antibody. (Heat-induced epitope retrieval by 10mM citric buffer)

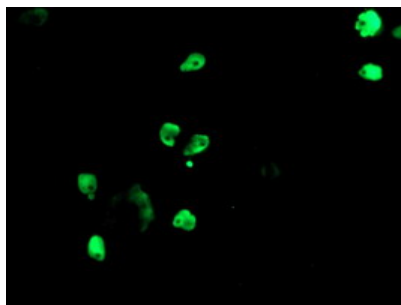


Immunohistochemical staining of paraffin-embedded Carcinoma of Human liver tissue using anti-TLE1 mouse monoclonal antibody. (Heat-induced epitope retrieval by 10mM citric buffer)

HEK293T cells transfected with either TLE1 (Myc-DDK-tagged) overexpress plasmid (Red) or empty vector control



plasmid (Blue) were immunostained by anti-TLE1 antibody (M02460-1)



Anti-TLE1 mouse monoclonal antibody (M02460-1) immunofluorescent staining of COS7 cells transiently transfected by pCMV6-ENTRY TLE1.

## Submit a product review to Biocompare.com

Submit a review of this product to Biocompare.com to receive a \$20 Amazon.com giftcard! Your reviews help your fellow scientists make the right decisions. Thank you for your contribution.



Anti-TLE 1 (TLE1) Mouse Monoclonal Antibody [Clone ID: OT11H2]

For Research Use Only. Not for use in diagnostic procedures.