

Anti-Lipin 1 Rabbit Monoclonal Antibody

Catalog Number: M02467-1

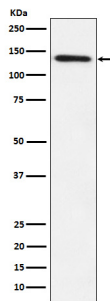
Overview

Product Name	Anti-Lipin 1 Rabbit Monoclonal Antibody
Reactive Species	Human
Description	Boster Bio Anti-Lipin 1 Rabbit Monoclonal Antibody catalog # M02467-1. Tested in WB, IHC, ICC/IF, IP, FC applications. This antibody reacts with Human.
Application	Flow Cytometry, IP, IF, IHC, ICC, WB
Clonality	Monoclonal 19L53
Formulation	Rabbit IgG in phosphate buffered saline, pH 7.4, 150mM NaCl, 0.02% sodium azide and 50% glycerol, 0.4-0.5mg/ml BSA.
Storage Instructions	Store at -20°C for one year. For short term storage and frequent use, store at 4°C for up to one month. Avoid repeated freeze-thaw cycles.
Host	Rabbit
Uniprot ID	Q14693

Technical Details

Immunogen	A synthesized peptide derived from human Lipin 1
Isotype	IgG
Form	Liquid
Concentration	Actual concentration vary by lot. Use suggested dilution ratio to decide dilution procedure.
Purification	Affinity-chromatography
Suggested Dilutions	<p>Dilute the sample so that the expected range of concentrations fall within the detection range of this kit.</p> <p>If the expected range of concentration is unknown, a pilot test should be conducted to decide the optimal dilution ratio for your samples.</p> <p>Some PubMed article(s) citing the expression level of this target are as follows: Boster Bio's internal QC testing used WB 1:500-1:2000 IHC 1:50-1:200 ICC/IF 1:50-1:200 IP 1:30 FC 1:50</p> <p>For protocols, please visit https://www.bosterbio.com/protocol-and-troubleshooting/</p>

Anti-Lipin 1 Rabbit Monoclonal Antibody (M02467-1) Images



Western blot analysis of Lipin 1 expression in HepG2 cell lysate.

Submit a product review to Biocompare.com

Submit a review of this product to Biocompare.com to receive a \$20 Amazon.com giftcard! Your reviews help your fellow scientists make the right decisions. Thank you for your contribution.



Anti-Lipin 1 Rabbit Monoclonal Antibody