

Anti-HEAB (CLP1) Mouse Monoclonal Antibody [Clone ID: OTI2D2]

Catalog Number: M02473

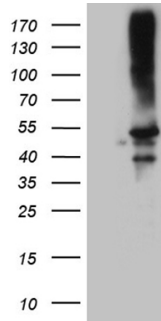
Overview

Product Name	Anti-HEAB (CLP1) Mouse Monoclonal Antibody [Clone ID: OTI2D2]
Reactive Species	Human, Mouse, Rat
Description	Boster Bio CLP1 mouse monoclonal antibody, clone OTI2D2. Catalog# M02473. Tested in WB. This antibody reacts with Human, Mouse, Rat.
Application	WB
Clonality	Monoclonal OTI2D2
Formulation	PBS (pH 7.3) containing 1% stabilizing protein, 50% glycerol and 0.02% sodium azide. This antibody is supplied in a stabilized formulation. Compatibility with conjugation reactions depends on the chemistry of the conjugation method used. For conjugation methods that are not compatible with the stabilizing components present in this formulation, a carrier-free antibody format is required.
Storage Instructions	Store at -20°C as received.
Host	Mouse
Uniprot ID	Q92989

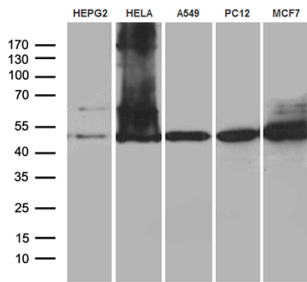
Technical Details

Immunogen	Human recombinant protein fragment corresponding to amino acids 1-226 of human CLP1 (NP_006822) produced in E.coli.
Isotype	IgG1
Concentration	1 mg/ml
Purification	Purified from mouse ascites fluids or tissue culture supernatant by affinity chromatography (protein A/G)
Suggested Dilutions	WB 1:500~2000

Anti-HEAB (CLP1) Mouse Monoclonal Antibody [Clone ID: OTI2D2] (M02473) Images



HEK293T cells were transfected with the pCMV6-ENTRY control (Left lane) or pCMV6-ENTRY CLP1 (Right lane) cDNA for 48 hrs and lysed. Equivalent amounts of cell lysates (5 ug per lane) were separated by SDS-PAGE and immunoblotted with anti-CLP1.



Western blot analysis of extracts (35ug) from 5 cell lines by using anti-CLP1 monoclonal antibody (1:500).

Submit a product review to [Biocompare.com](https://www.biocompare.com)

Submit a review of this product to [Biocompare.com](https://www.biocompare.com) to receive a \$20 Amazon.com giftcard! Your reviews help your fellow scientists make the right decisions. Thank you for your contribution.



Anti-HEAB (CLP1) Mouse Monoclonal Antibody [Clone ID: OTI2D2]

For Research Use Only. Not for use in diagnostic procedures.