

Anti-Syntenin (SDCBP) Mouse Monoclonal Antibody [Clone ID: OTI2H6]

Catalog Number: M02475

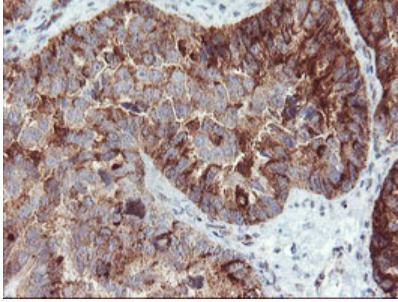
Overview

Product Name	Anti-Syntenin (SDCBP) Mouse Monoclonal Antibody [Clone ID: OTI2H6]
Reactive Species	Human, Mouse, Rat
Description	Boster Bio SDCBP (Syntenin) mouse monoclonal antibody, clone OTI2H6 (formerly 2H6). Catalog# M02475. Tested in IHC, WB. This antibody reacts with Human, Mouse, Rat.
Conjugate	Unconjugated
Application	IHC, WB
Clonality	Monoclonal OTI2H6
Formulation	PBS (pH 7.3) containing 1% stabilizing protein, 50% glycerol and 0.02% sodium azide. This antibody is supplied in a stabilized formulation. Compatibility with conjugation reactions depends on the chemistry of the conjugation method used. For conjugation methods that are not compatible with the stabilizing components present in this formulation, a carrier-free antibody format is required.
Storage Instructions	Store at -20°C for one year. For short term storage and frequent use, store at 4°C for up to one month. Avoid repeated freeze-thaw cycles.
Host	Mouse
Uniprot ID	O00560

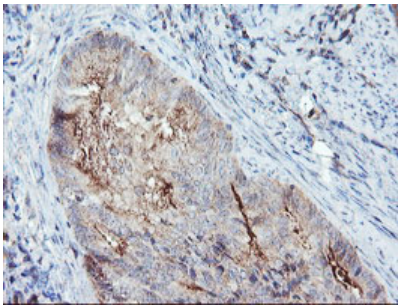
Technical Details

Immunogen	Full length human recombinant protein of human SDCBP (NP_005616) produced in HEK293T cell.
Isotype	IgG1
Concentration	1 mg/ml
Purification	Purified from mouse ascites fluids or tissue culture supernatant by affinity chromatography (protein A/G)
Suggested Dilutions	WB: 1:500~2000 IHC: 1:150

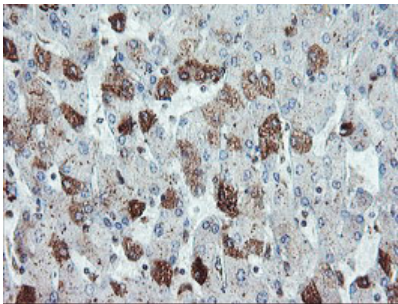
Anti-Syntenin (SDCBP) Mouse Monoclonal Antibody [Clone ID: OTI2H6] (M02475) Images



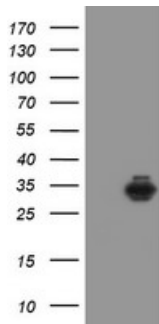
Immunohistochemical staining of paraffin-embedded Adenocarcinoma of Human ovary tissue using anti-SDCBP mouse monoclonal antibody. (Heat-induced epitope retrieval by 10mM citric buffer)



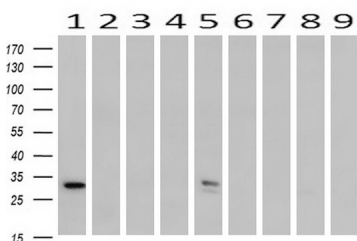
Immunohistochemical staining of paraffin-embedded Adenocarcinoma of Human endometrium tissue using anti-SDCBP mouse monoclonal antibody. (Heat-induced epitope retrieval by 10mM citric buffer)



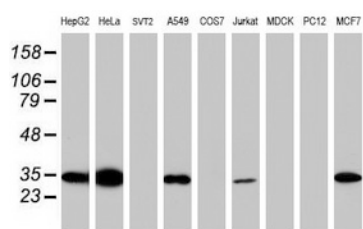
Immunohistochemical staining of paraffin-embedded Human liver tissue within the normal limits using anti-SDCBP mouse monoclonal antibody. (Heat-induced epitope retrieval by 10mM citric buffer)



HEK293T cells were transfected with the pCMV6-ENTRY control (Left lane) or pCMV6-ENTRY SDCBP (Right lane) cDNA for 48 hrs and lysed. Equivalent amounts of cell lysates (5 ug per lane) were separated by SDS-PAGE and immunoblotted with anti-SDCBP.



Western blot analysis of extracts (10ug) from 9 Human tissue by using anti-SDCBP monoclonal antibody at 1:200 (1: Testis; 2: Omentum; 3: Uterus; 4: Breast; 5: Brain; 6: Liver; 7: Ovary; 8: Thyroid gland; 9: Colon).



Western blot analysis of extracts (35ug) from 9 different cell lines by using anti-SDCBP monoclonal antibody (HepG2: human; HeLa: human; SVT2: mouse; A549: human; COS7: monkey; Jurkat: human; MDCK: canine; PC12: rat; MCF7: human).

Submit a product review to Biocompare.com

Submit a review of this product to Biocompare.com to receive a \$20 Amazon.com giftcard! Your reviews help your fellow scientists make the right decisions. Thank you for your contribution.



Anti-Syntenin (SDCBP) Mouse Monoclonal Antibody [Clone ID: OT12H6]

For Research Use Only. Not for use in diagnostic procedures.