

Anti-Nudel (NDEL1) Mouse Monoclonal Antibody [Clone ID: OTI5E11]

Catalog Number: M02478

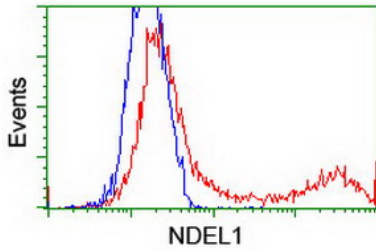
Overview

Product Name	Anti-Nudel (NDEL1) Mouse Monoclonal Antibody [Clone ID: OTI5E11]
Reactive Species	Human, Mouse, Rat
Description	Boster Bio NDEL1 (Nudel) mouse monoclonal antibody, clone OTI5E11 (formerly 5E11). Catalog# M02478. Tested in FC, IF, IHC, WB. This antibody reacts with Human, Mouse, Rat.
Conjugate	Unconjugated
Application	Flow Cytometry, IF, IHC, WB
Clonality	Monoclonal OTI5E11
Formulation	PBS (pH 7.3) containing 1% stabilizing protein, 50% glycerol and 0.02% sodium azide. This antibody is supplied in a stabilized formulation. Compatibility with conjugation reactions depends on the chemistry of the conjugation method used. For conjugation methods that are not compatible with the stabilizing components present in this formulation, a carrier-free antibody format is required.
Storage Instructions	Store at -20°C for one year. For short term storage and frequent use, store at 4°C for up to one month. Avoid repeated freeze-thaw cycles.
Host	Mouse
Uniprot ID	Q9GZM8

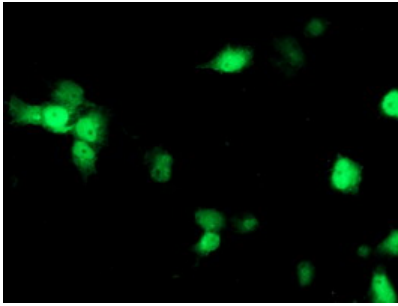
Technical Details

Immunogen	Full length human recombinant protein of human NDEL1 (NP_001020750) produced in HEK293 cell.
Isotype	IgG2a
Concentration	0.6 mg/ml
Purification	Purified from mouse ascites fluids or tissue culture supernatant by affinity chromatography (protein A/G)
Suggested Dilutions	WB 1:500~2000 IHC 1:150 IF 1:100 Flow Cytometry 1:100

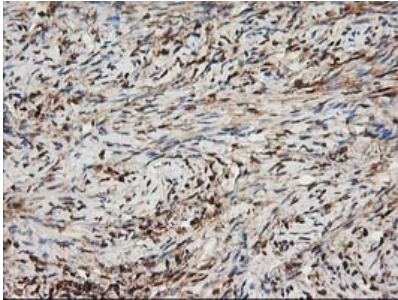
Anti-Nudel (NDEL1) Mouse Monoclonal Antibody [Clone ID: OTI5E11] (M02478) Images



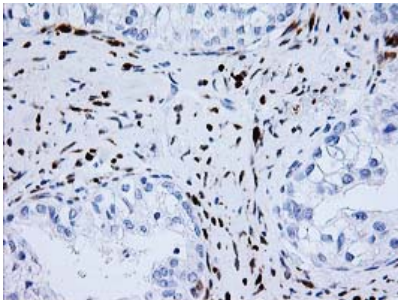
HEK293T cells transfected with either NDEL1 (Myc-DDK-tagged) overexpress plasmid (Red) or empty vector control plasmid (Blue) were immunostained by anti-NDEL1 antibody (M02478)



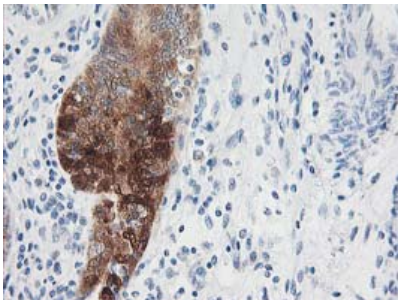
Anti-NDEL1 mouse monoclonal antibody (M02478) immunofluorescent staining of COS7 cells transiently transfected by pCMV6-ENTRY NDEL1.



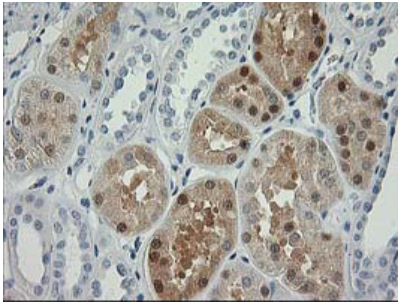
Immunohistochemical staining of paraffin-embedded Human Ovary tissue within the normal limits using anti-NDEL1 mouse monoclonal antibody. (Heat-induced epitope retrieval by 10mM citric buffer)



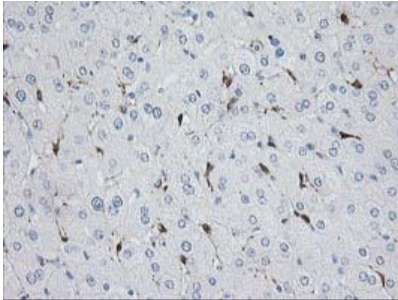
Immunohistochemical staining of paraffin-embedded Adenocarcinoma of Human ovary tissue using anti-NDEL1 mouse monoclonal antibody. (Heat-induced epitope retrieval by 10mM citric buffer)



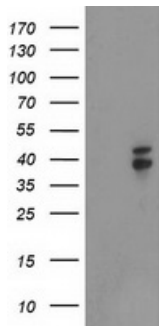
Immunohistochemical staining of paraffin-embedded Adenocarcinoma of Human endometrium tissue using anti-NDEL1 mouse monoclonal antibody. (Heat-induced epitope retrieval by 10mM citric buffer)



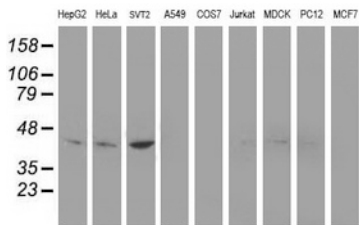
Immunohistochemical staining of paraffin-embedded Human Kidney tissue within the normal limits using anti-NDEL1 mouse monoclonal antibody. (Heat-induced epitope retrieval by 10mM citric buffer)



Immunohistochemical staining of paraffin-embedded Human liver tissue within the normal limits using anti-NDEL1 mouse monoclonal antibody. (Heat-induced epitope retrieval by 10mM citric buffer)



HEK293T cells were transfected with the pCMV6-ENTRY control (Left lane) or pCMV6-ENTRY NDEL1 (Right lane) cDNA for 48 hrs and lysed. Equivalent amounts of cell lysates (5 ug per lane) were separated by SDS-PAGE and immunoblotted with anti-NDEL1.



Western blot analysis of extracts (35ug) from 9 different cell lines by using anti-NDEL1 monoclonal antibody.

Submit a product review to Biocompare.com

Submit a review of this product to Biocompare.com to receive a \$20 Amazon.com giftcard! Your reviews help your fellow scientists make the right decisions. Thank you for your contribution.



Anti-Nudel (NDEL1) Mouse Monoclonal Antibody [Clone ID: OTI5E11]

For Research Use Only. Not for use in diagnostic procedures.