

Anti-Nudel (NDEL1) Mouse Monoclonal Antibody [Clone ID: OTI1G10]

Catalog Number: M02478-1

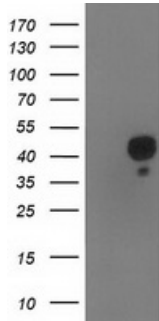
Overview

Product Name	Anti-Nudel (NDEL1) Mouse Monoclonal Antibody [Clone ID: OTI1G10]
Reactive Species	Dog, Human, Monkey, Mouse, Rat
Description	Boster Bio NDEL1 (Nudel) mouse monoclonal antibody, clone OTI1G10 (formerly 1G10). Catalog# M02478-1. Tested in FC, WB. This antibody reacts with Human, Monkey, Mouse, Rat, Dog.
Application	Flow Cytometry, WB
Clonality	Monoclonal OTI1G10
Formulation	PBS (pH 7.3) containing 1% stabilizing protein, 50% glycerol and 0.02% sodium azide. This antibody is supplied in a stabilized formulation. Compatibility with conjugation reactions depends on the chemistry of the conjugation method used. For conjugation methods that are not compatible with the stabilizing components present in this formulation, a carrier-free antibody format is required.
Storage Instructions	Store at -20°C as received.
Host	Mouse
Uniprot ID	Q9GZM8

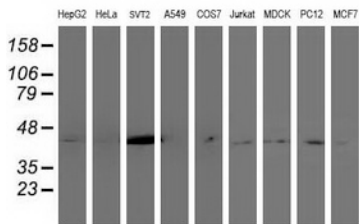
Technical Details

Immunogen	Full length human recombinant protein of human NDEL1 (NP_001020750) produced in HEK293T cell.
Isotype	IgG2b
Concentration	0.32 mg/ml
Purification	Purified from mouse ascites fluids or tissue culture supernatant by affinity chromatography (protein A/G)
Suggested Dilutions	WB: 1:500~2000 Flow cytometry: 1:100

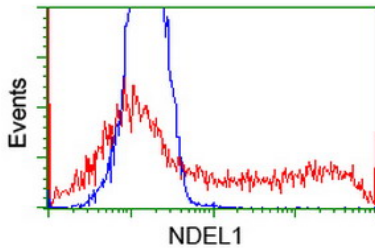
Anti-Nudel (NDEL1) Mouse Monoclonal Antibody [Clone ID: OTI1G10] (M02478-1) Images



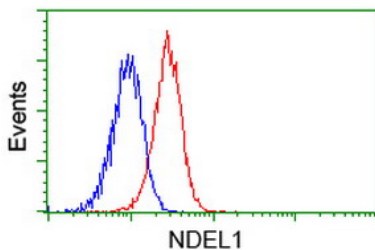
HEK293T cells were transfected with the pCMV6-ENTRY control (Left lane) or pCMV6-ENTRY NDEL1 (Right lane) cDNA for 48 hrs and lysed. Equivalent amounts of cell lysates (5 ug per lane) were separated by SDS-PAGE and immunoblotted with anti-NDEL1.



Western blot analysis of extracts (35ug) from 9 different cell lines by using anti-NDEL1 monoclonal antibody.



HEK293T cells transfected with either NDEL1 (Myc-DDK-tagged) overexpress plasmid (Red) or empty vector control plasmid (Blue) were immunostained by anti-NDEL1 antibody (M02478-1)



Flow cytometric Analysis of Jurkat cells

Submit a product review to [Biocompare.com](https://www.biocompare.com)

Submit a review of this product to [Biocompare.com](https://www.biocompare.com) to receive a \$20 Amazon.com giftcard! Your reviews help your fellow scientists make the right decisions. Thank you for your contribution.



Anti-Nudel (NDEL1) Mouse Monoclonal Antibody [Clone ID: OTI1G10]

For Research Use Only. Not for use in diagnostic procedures.