

Anti-Neurofilament Light Chain NF-L Antibody

Catalog Number: M02482-4

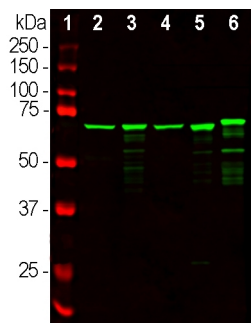
Overview

Product Name	Anti-Neurofilament Light Chain NF-L Antibody
Reactive Species	Bovine, Human, Mouse, Pig, Rat
Description	Boster Bio Anti-Neurofilament Light Chain NF-L Antibody catalog # M02482-4. Tested in IF, IHC, ICC, WB applications. This antibody reacts with Bovine, Human, Mouse, Pig, Rat.
Application	IF, IHC, ICC, WB
Clonality	Polyclonal
Formulation	Supplied as an aliquot of IgY preparation plus 5mM NaN ₃
Storage Instructions	Store at -20°C for one year. For short term storage and frequent use, store at 4°C for up to one month. Avoid repeated freeze-thaw cycles.
Host	Chicken
Uniprot ID	P07196

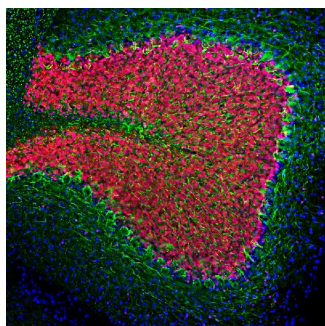
Technical Details

Immunogen	Recombinant human NF-L protein
Concentration	0.5-1mg/ml, actual concentration vary by lot. Use suggested dilution ratio to decide dilution procedure.
Suggested Dilutions	<p>Dilute the sample so that the expected range of concentrations fall within the detection range of this kit.</p> <p>If the expected range of concentration is unknown, a pilot test should be conducted to decide the optimal dilution ratio for your samples.</p> <p>Some PubMed article(s) citing the expression level of this target are as follows:</p> <p>Boster Bio's internal QC testing used:</p> <p>WB: 1:5,000. IF/ICC and IHC: 1:2,000.</p>

Anti-Neurofilament Light Chain NF-L Antibody (M02482-4) Images



Western blot analysis of tissue lysates probed with chicken pAb to NF-L, M02482-4, dilution 1:20,000 in green: [1] protein standard (red), [2] rat brain, [3] rat spinal cord, [4] mouse brain, [5] mouse spinal cord and [6] cow spinal cord. Strong bands at ~68kDa



Immunofluorescent analysis of rat cerebellum section stained with chicken pAb to NF-L, M02482-4, dilution 1:2,000 in green, and costained with mouse

Submit a product review to Biocompare.com

Submit a review of this product to Biocompare.com to receive a \$20 Amazon.com giftcard! Your reviews help your fellow scientists make the right decisions. Thank you for your contribution.



Anti-Neurofilament Light Chain NF-L Antibody