

## Anti-NTAL Purified Lat2 Monoclonal Antibody

Catalog Number: M02496-1

### About Lat2

NTAL (non-T cell activation linker), also known as LAB (linker for activation of B cells), is a 30 kDa double-palmitoylated transmembrane adaptor protein expressed by B cells, NK cells, mast cells and macrophages. It is a negative regulator of early stages of BCR-dependent B cell signaling and serves as a negative regulator also in mast cells. However, in mast cells, NTAL also contributes to some activation processes, partially overlapping with LAT function.

### Overview

Product Name	Anti-NTAL Purified Lat2 Monoclonal Antibody
Reactive Species	Human, Mouse
Description	Boster Bio Anti-NTAL Purified Lat2 Monoclonal Antibody (Catalog# M02496-1). Tested in Flow Cytometry, IP, WB, ICC application(s). This antibody reacts with Human, Mouse.
Application	Flow Cytometry, IP, ICC, WB
Clonality	Monoclonal NAP-07
Formulation	Phosphate buffered saline (PBS), pH 7.4, 15 mM sodium azide
Storage Instructions	Store at 2-8°C. Do not freeze.
Host	Mouse
Uniprot ID	Q9JHLO

### Technical Details

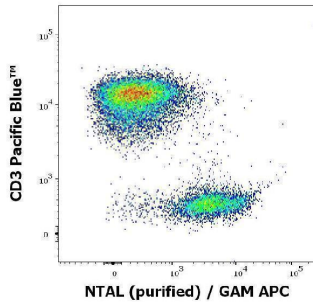
Immunogen	Recombinant cytoplasmic domain (aa 91-243) of human NTAL. The antibody NAP-07 reacts with an intracellular epitope of Non-T cell activation linker (NTAL), also known as LAB (linker of activated B cells), a 25 - 30 kDa transmembrane adaptor protein associating with lipid raft components in the plasma membrane of B lymphocytes, NK cells and myeloid cells.
Predicted Reactive Species	Primate
Cross Reactivity	This antibody does not cross-react with Thy-1.1 alloantigen.
Isotype	Mouse IgG1
Form	Liquid
Concentration	1 mg/ml
Purification	Purified by protein-A affinity chromatography.

Suggested Dilutions

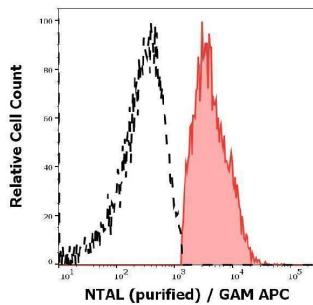
Western blotting: 1-2 ug/ml.

Flow cytometry: Intracellular staining; recommended dilution: 1-4 µg/ml; positive tissue: RAJI human lymphoma cell line, RAMOS human lymphoma cell line.

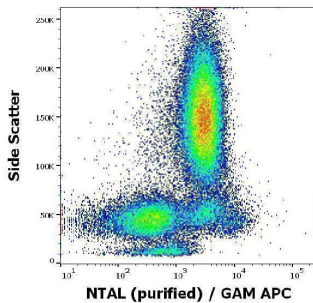
## Anti-NTAL Purified Lat2 Monoclonal Antibody (M02496-1) Images



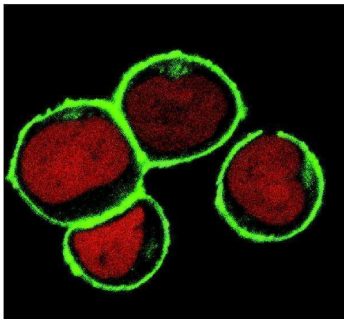
Flow cytometry multicolor intracellular staining of human peripheral whole blood stained using anti-NTAL (NAP-07) purified antibody (concentration in sample 9 µg/ml, GAM APC) and anti-human CD3 (UCHT1) Pacific Blue™ antibody (20 µl reagent / 100 µl of peripheral whole blood).



Separation of human CD3 negative NTAL positive lymphocytes (red-filled) from CD3 positive NTAL negative lymphocytes (black-dashed) in flow cytometry analysis (intracellular staining) of peripheral whole blood stained using anti-NTAL (NAP-07) purified antibody (concentration in sample 9 µg/ml, GAM APC).

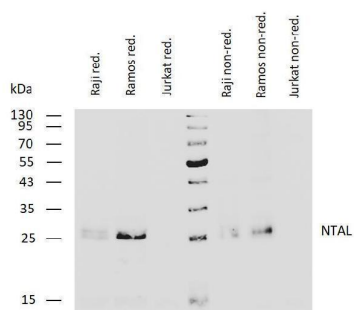


Flow cytometry intracellular staining pattern of human peripheral whole blood using anti-NTAL (NAP-07) purified antibody (concentration in sample 9 µg/ml, GAM APC).



Immunocytochemistry analysis of NTAL by confocal microscopy in THP-1 human acute monocytic leukemia cell line. The cells were permeabilized and immunostained using anti-NTAL (NAP-07; green). Nuclei are visualized by propidium iodide (red).

Western blotting analysis of human NTAL using mouse monoclonal antibody NAP-07 on lysates of Raji and Ramos cells and on Jurkat cells (negative control) under reducing and non-reducing conditions. Nitrocellulose membrane was probed with 2 µg/ml of mouse monoclonal antibody followed by IRDye800-conjugated anti-mouse secondary antibody. NTAL was detected around 27 kDa.



## Submit a product review to [Biocompare.com](https://www.biocompare.com)

Submit a review of this product to [Biocompare.com](https://www.biocompare.com) to receive a \$20 Amazon.com giftcard! Your reviews help your fellow scientists make the right decisions. Thank you for your contribution.



### Anti-NTAL Purified Lat2 Monoclonal Antibody

For Research Use Only. Not for use in diagnostic procedures.