

Anti-Semaphorin 4D (SEMA4D) Mouse Monoclonal Antibody [Clone ID: OTI6G1]

Catalog Number: M02512

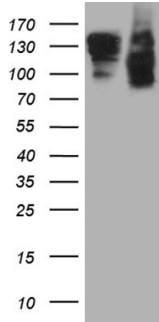
Overview

Product Name	Anti-Semaphorin 4D (SEMA4D) Mouse Monoclonal Antibody [Clone ID: OTI6G1]
Reactive Species	Human, Mouse
Description	Boster Bio SEMA4D mouse monoclonal antibody, clone OTI6G1. Catalog# M02512. Tested in IHC, WB. This antibody reacts with Human, Mouse.
Application	IHC, WB
Clonality	Monoclonal OTI6G1
Formulation	PBS (pH 7.3) containing 1% stabilizing protein, 50% glycerol and 0.02% sodium azide. This antibody is supplied in a stabilized formulation. Compatibility with conjugation reactions depends on the chemistry of the conjugation method used. For conjugation methods that are not compatible with the stabilizing components present in this formulation, a carrier-free antibody format is required.
Storage Instructions	Store at -20°C as received.
Host	Mouse
Uniprot ID	Q92854

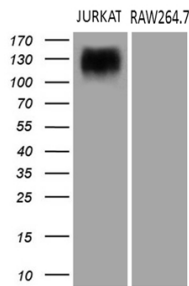
Technical Details

Immunogen	Full length human recombinant protein of human SEMA4D (NP_006369) produced in HEK293T cell.
Isotype	IgG2b
Concentration	1 mg/ml
Purification	Purified from mouse ascites fluids or tissue culture supernatant by affinity chromatography (protein A/G)
Suggested Dilutions	WB: 1:500~2000 IHC: 1:500

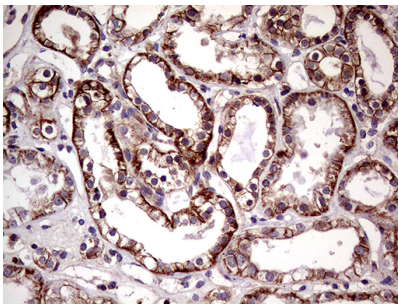
Anti-Semaphorin 4D (SEMA4D) Mouse Monoclonal Antibody [Clone ID: OTI6G1] (M02512) Images



HEK293T cells were transfected with the pCMV6-ENTRY control (Left lane) or pCMV6-ENTRY SEMA4D (Right lane) cDNA for 48 hrs and lysed. Equivalent amounts of cell lysates (5 ug per lane) were separated by SDS-PAGE and immunoblotted with anti-SEMA4D (1:2000).



Western blot analysis of extracts (35ug) from 2 different cell lines by using anti-SEMA4D monoclonal antibody (1:500).



Immunohistochemical staining of paraffin-embedded Human Kidney tissue within the normal limits using anti-SEMA4D mouse monoclonal antibody. (Heat-induced epitope retrieval by 1mM EDTA in 10mM Tris buffer (pH8.5) at 120°C for 3min)

Submit a product review to [Biocompare.com](https://www.biocompare.com)

Submit a review of this product to [Biocompare.com](https://www.biocompare.com) to receive a \$20 Amazon.com giftcard! Your reviews help your fellow scientists make the right decisions. Thank you for your contribution.



Anti-Semaphorin 4D (SEMA4D) Mouse Monoclonal Antibody [Clone ID: OTI6G1]

For Research Use Only. Not for use in diagnostic procedures.