

## Anti-SEMA4D / CD100 Reference Antibody (pepinemab)

Catalog Number: M02512-2

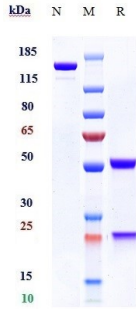
### Overview

Product Name	Anti-SEMA4D / CD100 Reference Antibody (pepinemab)
Reactive Species	Human, Mouse
Description	Boster Bio Anti-SEMA4D / CD100 Reference Antibody (pepinemab) (Catalog # M02512-2). Tested in Flow Cytometry, ELISA, FTA. This antibody reacts with Human, Mouse. Endotoxin: < 0.726EU/ug,determined by LAL method. Expression system: CHO Cell
Application	ELISA, Flow Cytometry, Functional Assay, Kinetics
Clonality	Monoclonal
Formulation	Purified monoclonal antibody supplied in PBS, pH6.0, without preservative.This antibody is purified through a protein A column.
Storage Instructions	Maintain refrigerated at 2-8°C for up to 2 weeks. For long-term storage, aliquot and store at -20°C to avoid repeated freeze-thaw cycles.
Uniprot ID	Q92854

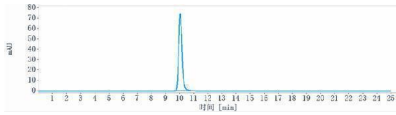
### Technical Details

Isotype	IgG4SP
Form	Liquid

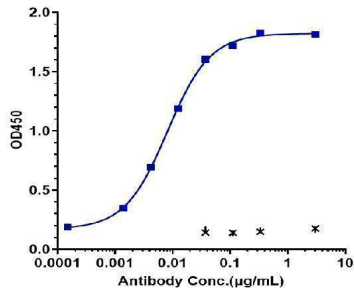
## Anti-SEMA4D / CD100 Reference Antibody (pepinemab) (M02512-2) Images



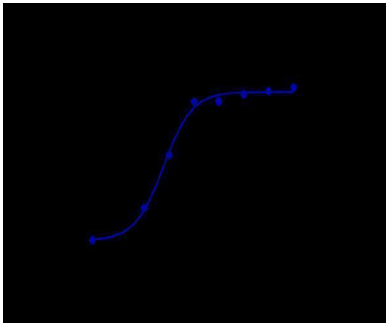
Anti-SEMA4D/CD100 Reference Antibody (pepinemab) on SDS-PAGE under reducing (R) condition. The gel was stained with Coomassie Blue. The purity of the protein is greater than 95%



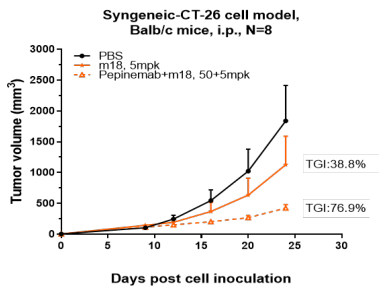
The purity of Anti-SEMA4D/CD100 Reference Antibody (pepinemab) is more than 100%



Immobilized human SEMA4D/CD100



Human C100 HEK293 cells were stained with Anti-SEMA4D/CD100 Reference Antibody (pepinemab) and negative control protein respectively



Pepinemab inhibited the tumor growth of CT26 on balb/c mice. The result showed significant anti-tumor effects

Submit a product review to [Biocompare.com](https://www.biocompare.com)

Submit a review of this product to [Biocompare.com](https://www.biocompare.com) to receive a \$20 Amazon.com giftcard! Your



reviews help your fellow scientists make the right decisions. Thank you for your contribution.

Anti-SEMA4D / CD100 Reference Antibody (pepinemab)

For Research Use Only. Not for use in diagnostic procedures.