

Anti-STK39 Rabbit Monoclonal Antibody

Catalog Number: M02516-2

About STK39

F-actin cross-linking protein which is thought to anchor actin to a variety of intracellular structures. This is a bundling protein. Probably involved in vesicular trafficking via its association with the CART complex. The CART complex is necessary for efficient transferrin receptor recycling but not for EGFR degradation.

Overview

| | |
|----------------------|---|
| Product Name | Anti-STK39 Rabbit Monoclonal Antibody |
| Reactive Species | Human |
| Description | Boster Bio Anti-STK39 Rabbit Monoclonal Antibody catalog # M02516-2. Tested in WB, IHC, Flow Cytometry applications. This antibody reacts with Human. |
| Conjugate | FITC |
| Application | Flow Cytometry, IHC, WB |
| Clonality | Monoclonal 25S16 |
| Formulation | Rabbit IgG in phosphate buffered saline, pH 7.4, 150mM NaCl, 0.02% sodium azide and 50% glycerol, 0.4-0.5mg/ml BSA. |
| Storage Instructions | Store at -20°C for one year. For short term storage and frequent use, store at 4°C for up to one month. Avoid repeated freeze-thaw cycles. |
| Host | Rabbit |
| Uniprot ID | Q9UEW8 |

Technical Details

| | |
|----------------------------|--|
| Immunogen | A synthesized peptide derived from human STK39 |
| Predicted Reactive Species | Human, Primate |
| Cross Reactivity | Detects ~20kDa. Does not cross-react with alphaB-crystallin, betaL-crystallin, ̢H- crystallin, gamma-crystallin, HSP25, HSP27 or HSP47 proteins. |
| Isotype | IgG |
| Form | Liquid |
| Concentration | Actual concentration vary by lot. Use suggested dilution ratio to decide dilution procedure. |
| Purification | Affinity-chromatography |

Suggested Dilutions

Dilute the sample so that the expected range of concentrations fall within the detection range of this kit.

If the expected range of concentration is unknown, a pilot test should be conducted to decide the optimal dilution ratio for your samples.

Some PubMed article(s) citing the expression level of this target are as follows:

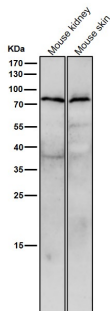
Boster Bio's internal QC testing used:

WB 1:500-1:2000

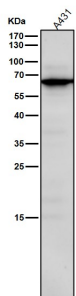
IHC 1:50-1:200

FC 1:50

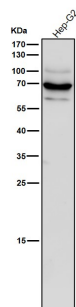
Anti-STK39 Rabbit Monoclonal Antibody (M02516-2) Images



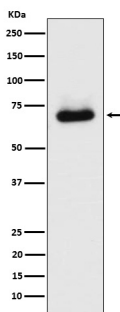
All lanes use the Antibody at 1:3K dilution for 1 hour at room temperature.



All lanes use the Antibody at 1:3K dilution for 1 hour at room temperature.

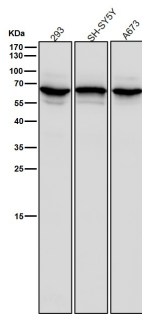


All lanes use the Antibody at 1:3K dilution for 1 hour at room temperature.



Western blot analysis of STK39 expression in HepG2 cell lysate.

All lanes use the Antibody at 1:3K dilution for 1 hour at room temperature.



Submit a product review to Biocompare.com

Submit a review of this product to Biocompare.com to receive a \$20 Amazon.com giftcard! Your reviews help your fellow scientists make the right decisions. Thank you for your contribution.



Anti-STK39 Rabbit Monoclonal Antibody