

Anti-LOXL2 Mouse Monoclonal Antibody [Clone ID: OTI8B2]

Catalog Number: M02539-1

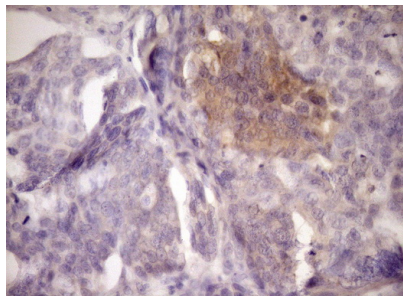
Overview

Product Name	Anti-LOXL2 Mouse Monoclonal Antibody [Clone ID: OTI8B2]
Reactive Species	Human, Mouse, Rat
Description	Boster Bio LOXL2 mouse monoclonal antibody, clone OTI8B2 (formerly 8B2). Catalog# M02539-1. Tested in IHC. This antibody reacts with Human, Mouse, Rat.
Conjugate	Unconjugated
Application	IHC
Clonality	Monoclonal OTI8B2
Formulation	PBS (pH 7.3) containing 1% stabilizing protein, 50% glycerol and 0.02% sodium azide. This antibody is supplied in a stabilized formulation. Compatibility with conjugation reactions depends on the chemistry of the conjugation method used. For conjugation methods that are not compatible with the stabilizing components present in this formulation, a carrier-free antibody format is required.
Storage Instructions	Store at -20°C for one year. For short term storage and frequent use, store at 4°C for up to one month. Avoid repeated freeze-thaw cycles.
Host	Mouse
Uniprot ID	Q9Y4K0

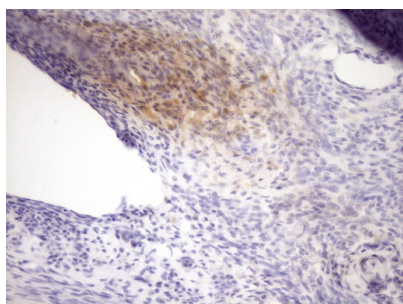
Technical Details

Immunogen	Human recombinant protein fragment corresponding to amino acids 152-450 of human LOXL2 (NP_002309) produced in E.coli.
Isotype	IgG2a
Concentration	1 mg/ml
Purification	Purified from mouse ascites fluids or tissue culture supernatant by affinity chromatography (protein A/G)
Suggested Dilutions	IHC 1:150

Anti-LOXL2 Mouse Monoclonal Antibody [Clone ID: OTI8B2] (M02539-1) Images



Immunohistochemical staining of paraffin-embedded Adenocarcinoma of Human ovary tissue using anti-LOXL2 mouse monoclonal antibody. (Heat-induced epitope retrieval by Tris-EDTA)



Immunohistochemical staining of paraffin-embedded Human endometrium tissue within the normal limits using anti-LOXL2 mouse monoclonal antibody. (Heat-induced epitope retrieval by Tris-EDTA)

Submit a product review to Biocompare.com

Submit a review of this product to Biocompare.com to receive a \$20 Amazon.com giftcard! Your reviews help your fellow scientists make the right decisions. Thank you for your contribution.



Anti-LOXL2 Mouse Monoclonal Antibody [Clone ID: OTI8B2]

For Research Use Only. Not for use in diagnostic procedures.