

Anti-MBD2/MBD3 Antibody (Monoclonal, ABM14A8)

Catalog Number: M02571

About MBD3

Recognizes a protein of 40-45kDa, identified as human milk fat globule membrane protein (HMFG). HMFG is present on normal human breast epithelial cells and cell lines derived from breast carcinomas, as well as to the outer surface of the human milk fat globule. HMFG is considered as a differentiation marker. It is useful as specific breast epithelial marker and can also provide a tool to study the role of the cell surface in normal and neoplastic mammary development.

Overview

Product Name	Anti-MBD2/MBD3 Antibody (Monoclonal, ABM14A8)
Reactive Species	Human
Description	Boster Bio Anti-MBD2/MBD3 Antibody (Monoclonal, ABM14A8) (Catalog# M02571). Tested in IHC, FACS, WB application(s). This antibody reacts with Human.
Conjugate	Biotin
Application	IHC, WB, FACS
Clonality	Monoclonal ABM14A8
Formulation	100 ug in 200 ul PBS containing 0.05% BSA and 0.05% sodium azide.
Storage Instructions	Store the antibody at 4°C, stable for 6 months. For long-term storage, store at -20°C. Avoid repeated freeze and thaw cycles.
Host	Mouse
Uniprot ID	O95983

Technical Details

Immunogen	A partial length recombinant MBD3 protein (amino acids 1-290)
Predicted Reactive Species	Pig, Rabbit
Cross Reactivity	Does not cross-react with primate, avian or amphibian GR.
Isotype	IgG1 Kappa
Form	Liquid
Concentration	0.5-1mg/ml, actual concentration vary by lot. Use suggested dilution ratio to decide dilution procedure.
Purification	Protein G Chromatography

Suggested Dilutions

Dilute the sample so that the expected range of concentrations fall within the detection range of this kit.

If the expected range of concentration is unknown, a pilot test should be conducted to decide the optimal dilution ratio for your samples.

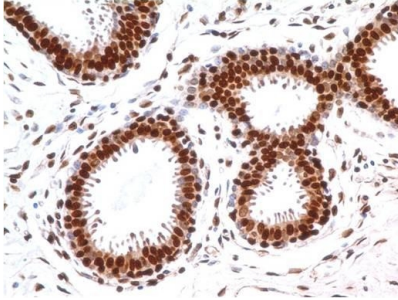
Some PubMed article(s) citing the expression level of this target are as follows:

Boster Bio's internal QC testing used:

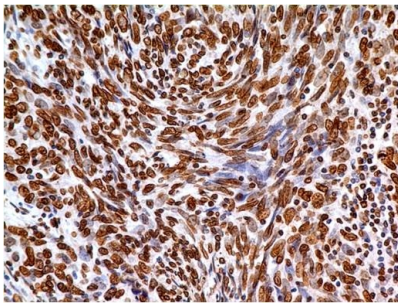
Western blot: 2-4 µg/ml

IHC: 5 µg/ml, FACS analysis: 0.5 µg/10⁶ cells

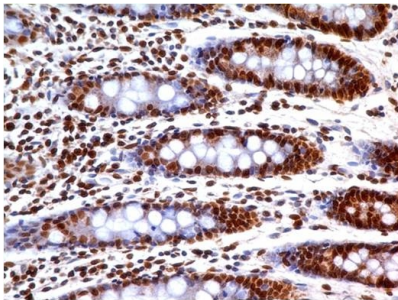
Anti-MBD2/MBD3 Antibody (Monoclonal, ABM14A8) (M02571) Images



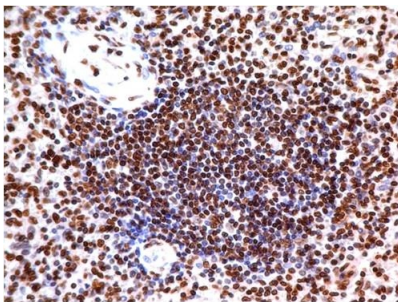
Immunohistochemical analysis of MBD3 in Squamous cell carcinoma of Lungs using MBD3 antibody (Clone: ABM14A8) at 5 ug/ml.



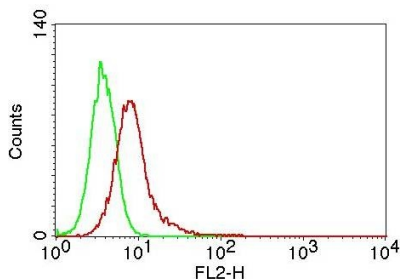
Immunohistochemical analysis of MBD3 in Squamous cell carcinoma of Lungs using MBD3 antibody (Clone: ABM14A8) at 5 ug/ml.



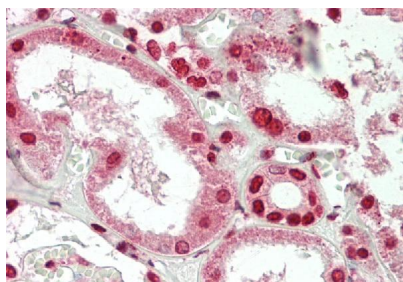
Immunohistochemical analysis of MBD3 in human Colon tissue using MBD3 antibody (Clone: ABM14A8) at 5 ug/ml.



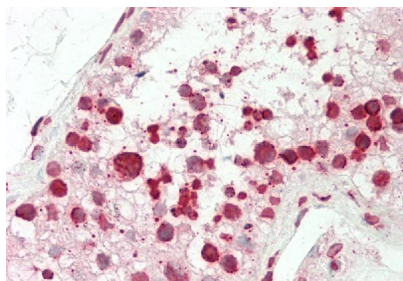
Immunohistochemical analysis of MBD3 in human Spleen tissue using MBD3 antibody (Clone: ABM14A8) at 5 ug/ml.



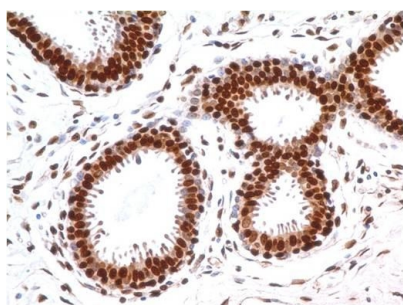
Immunohistochemical analysis of MBD3 in human Testis tissue using MBD3 antibody (Clone: ABM14A8) at 10 ug/ml.



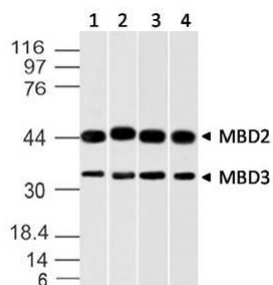
Immunohistochemical analysis of MBD3 in human Kidney tissue using MBD3 antibody (Clone: ABM14A8) at 10 ug/ml.



Immunohistochemical analysis of MBD3 in human Testis tissue using MBD3 antibody (Clone: ABM14A8) at 10 ug/ml.



Immunohistochemical analysis of MBD3 in human breast tissue using MBD3 antibody (Clone: ABM14A8) at 5 ug/ml.



Western blot analysis of MBD3 (and MBD2). Anti-MBD3 (and MBD2) antibody (Clone: ABM14A8) was used at 2 ug/ml on A431, K562, A375 and HEK293 lysates.

Submit a product review to [Biocompare.com](https://www.biocompare.com)

Submit a review of this product to [Biocompare.com](https://www.biocompare.com) to receive a \$20 Amazon.com giftcard! Your reviews help your fellow scientists make the right decisions. Thank you for your contribution.



Anti-MBD2/MBD3 Antibody (Monoclonal, ABM14A8)