

## Anti-GEF H1 (ARHGEF2) Mouse Monoclonal Antibody [Clone ID: OTI5F2]

Catalog Number: M02572

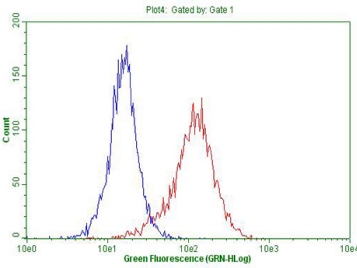
### Overview

Product Name	Anti-GEF H1 (ARHGEF2) Mouse Monoclonal Antibody [Clone ID: OTI5F2]
Reactive Species	Human, Mouse, Rat
Description	Boster Bio ARHGEF2 mouse monoclonal antibody, clone OTI5F2. Catalog# M02572. Tested in FC, WB. This antibody reacts with Human, Mouse, Rat.
Conjugate	Unconjugated
Application	Flow Cytometry, WB
Clonality	Monoclonal OTI5F2
Formulation	PBS (pH 7.3) containing 1% stabilizing protein, 50% glycerol and 0.02% sodium azide. This antibody is supplied in a stabilized formulation. Compatibility with conjugation reactions depends on the chemistry of the conjugation method used. For conjugation methods that are not compatible with the stabilizing components present in this formulation, a carrier-free antibody format is required.
Storage Instructions	Store at -20°C for one year. For short term storage and frequent use, store at 4°C for up to one month. Avoid repeated freeze-thaw cycles.
Host	Mouse
Uniprot ID	Q92974

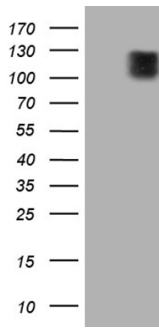
### Technical Details

Immunogen	Full length human recombinant protein of human ARHGEF2 (NP_004714) produced in HEK293T cell.
Isotype	IgG1
Concentration	1 mg/ml
Purification	Purified from mouse ascites fluids or tissue culture supernatant by affinity chromatography (protein A/G)
Suggested Dilutions	WB: 1:2000 Flow Cytometry: 1:100

## Anti-GEF H1 (ARHGEF2) Mouse Monoclonal Antibody [Clone ID: OTI5F2] (M02572) Images



Flow cytometric Analysis of permeabilized Hela cells



HEK293T cells were transfected with the pCMV6-ENTRY control (Left lane) or pCMV6-ENTRY ARHGEF2 (Right lane) cDNA for 48 hrs and lysed. Equivalent amounts of cell lysates (5 ug per lane) were separated by SDS-PAGE and immunoblotted with anti-ARHGEF2 (1:2000).

### Submit a product review to Biocompare.com

Submit a review of this product to Biocompare.com to receive a \$20 Amazon.com giftcard! Your reviews help your fellow scientists make the right decisions. Thank you for your contribution.



Anti-GEF H1 (ARHGEF2) Mouse Monoclonal Antibody [Clone ID: OTI5F2]

For Research Use Only. Not for use in diagnostic procedures.