

Anti-SHARP2 (BHLHE40) Mouse Monoclonal Antibody [Clone ID: OTI10H1]

Catalog Number: M02575

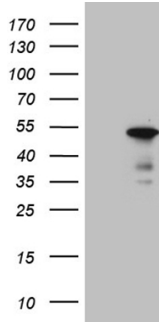
Overview

| | |
|----------------------|--|
| Product Name | Anti-SHARP2 (BHLHE40) Mouse Monoclonal Antibody [Clone ID: OTI10H1] |
| Reactive Species | Human |
| Description | Boster Bio BHLHE40 mouse monoclonal antibody, clone OTI10H1. Catalog# M02575. Tested in IHC, WB. This antibody reacts with Human. |
| Application | IHC, WB |
| Clonality | Monoclonal OTI10H1 |
| Formulation | PBS (pH 7.3) containing 1% stabilizing protein, 50% glycerol and 0.02% sodium azide. This antibody is supplied in a stabilized formulation. Compatibility with conjugation reactions depends on the chemistry of the conjugation method used. For conjugation methods that are not compatible with the stabilizing components present in this formulation, a carrier-free antibody format is required. |
| Storage Instructions | Store at -20°C as received. |
| Host | Mouse |
| Uniprot ID | O14503 |

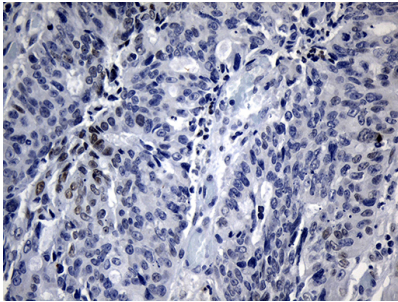
Technical Details

| | |
|---------------------|--|
| Immunogen | Human recombinant protein fragment corresponding to amino acids 1-313 of human BHLHE40 (NP_003661) produced in E.coli. |
| Isotype | IgG1 |
| Concentration | 1 mg/ml |
| Purification | Purified from mouse ascites fluids or tissue culture supernatant by affinity chromatography (protein A/G) |
| Suggested Dilutions | WB 1:2000 IHC 1:150 |

Anti-SHARP2 (BHLHE40) Mouse Monoclonal Antibody [Clone ID: OTI10H1] (M02575) Images



HEK293T cells were transfected with the pCMV6-ENTRY control (Left lane) or pCMV6-ENTRY BHLHE40 (Right lane) cDNA for 48 hrs and lysed. Equivalent amounts of cell lysates (5 ug per lane) were separated by SDS-PAGE and immunoblotted with anti-BHLHE40 (1:2000).



Immunohistochemical staining of paraffin-embedded Adenocarcinoma of Human colon tissue using anti-BHLHE40 mouse monoclonal antibody. (Heat-induced epitope retrieval by 1mM EDTA in 10mM Tris buffer (pH8.5) at 120°C for 3min)

Submit a product review to [Biocompare.com](https://www.biocompare.com)

Submit a review of this product to [Biocompare.com](https://www.biocompare.com) to receive a \$20 Amazon.com giftcard! Your reviews help your fellow scientists make the right decisions. Thank you for your contribution.



Anti-SHARP2 (BHLHE40) Mouse Monoclonal Antibody [Clone ID: OTI10H1]

For Research Use Only. Not for use in diagnostic procedures.