

Anti-MCM3 Antibody

Catalog Number: M02580-1

About MCM3

Acts as component of the MCM2-7 complex (MCM complex) which is the putative replicative helicase essential for 'once per cell cycle' DNA replication initiation and elongation in eukaryotic cells. The active ATPase sites in the MCM2-7 ring are formed through the interaction surfaces of two neighboring subunits such that a critical structure of a conserved arginine finger motif is provided in trans relative to the ATP-binding site of the Walker A box of the adjacent subunit. The six ATPase active sites, however, are likely to contribute differentially to the complex helicase activity. Required for DNA replication and cell proliferation.

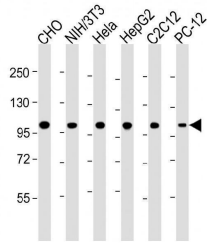
Overview

Product Name	Anti-MCM3 Antibody
Reactive Species	Human, Mouse, Rat
Description	Boster Bio Anti-MCM3 Antibody (Catalog # M02580-1). Tested in WB, Flow Cytometry application(s). This antibody reacts with Human, Mouse, Rat.
Application	Flow Cytometry, WB
Clonality	Monoclonal 1593CT377.41.73
Formulation	Purified monoclonal antibody supplied in PBS with 0.09% (W/V) sodium azide.
Storage Instructions	Maintain refrigerated at 2-8°C for up to 2 weeks. For long-term storage, store at -20°C in small aliquots to prevent freeze-thaw cycles.
Host	Mouse
Uniprot ID	P25205

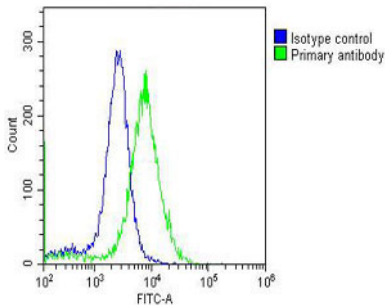
Technical Details

Immunogen	This MCM3 antibody is generated from a mouse immunized with a recombinant protein of human MCM3.
Predicted Reactive Species	Mouse
Isotype	IgG1,k
Purification	This antibody is purified through a protein G column, followed by dialysis against PBS.
Suggested Dilutions	WB: 1:4000 FC: 1:25

Anti-MCM3 Antibody (M02580-1) Images



All lanes : Anti-MCM3 Antibody at 1:4000 dilution
Lane 1: CHO whole cell lysate
Lane 2: NIH/3T3 whole cell lysate
Lane 3: HeLa whole cell lysate
Lane 4: HepG2 whole cell lysate
Lane 5: C2C12 whole cell lysate
Lane 6: PC-12 whole cell lysate
Lysates/proteins at 20 µg per lane. Secondary Goat Anti-mouse IgG, (H+L), Peroxidase conjugated at 1/10000 dilution. Predicted band size : 91 kDa
Blocking/Dilution buffer: 5% NFDM/TBST.



Overlay histogram showing HeLa cells stained with M02580-1 (green line). The cells were fixed with 2% paraformaldehyde (10 min) and then permeabilized with 90% methanol for 10 min. The cells were then incubated in 2% bovine serum albumin to block non-specific protein-protein interactions followed by the antibody (M02580-1 , 1:25 dilution) for 60 min at 37°C. The secondary antibody used was Goat-Anti-Mouse IgG, DyLight® 488 Conjugated Highly Cross-Adsorbed at 1/200 dilution for 40 min at 37°C. Isotype control antibody (blue line) was mouse IgG1 (1µg/1x10⁶ cells) used under the same conditions. Acquisition of >10, 000 events was performed.

Submit a product review to Biocompare.com

Submit a review of this product to Biocompare.com to receive a \$20 Amazon.com giftcard! Your reviews help your fellow scientists make the right decisions. Thank you for your contribution.



Anti-MCM3 Antibody

For Research Use Only. Not for use in diagnostic procedures.