

Anti-ARSA Antibody Picoband® (monoclonal, 4C10)

Catalog Number: M02583

About ARSA

Arylsulfatase A (ARSA) is an enzyme that breaks down sulfatides, namely cerebroside 3-sulfate, intocerebroside, and sulfate. In humans, arylsulfatase A is encoded by the ARSA gene. ARSA is mapped to 22q13.33. The protein encoded by this gene hydrolyzes cerebroside sulfate to cerebroside and sulfate. Defects in this gene lead to metachromatic leucodystrophy (MLD), a progressive demyelination disease which results in a variety of neurological symptoms and ultimately death. Alternatively spliced transcript variants have been described for this gene.

Overview

Product Name	Anti-ARSA Antibody Picoband® (monoclonal, 4C10)
Reactive Species	Human, Mouse, Rat
Description	Boster Bio Anti-ARSA Antibody Picoband® (monoclonal, 4C10) catalog # M02583. Tested in Flow Cytometry, IHC, WB applications. This antibody reacts with Human, Mouse, Rat. The brand Picoband indicates this is a premium antibody that guarantees superior quality, high affinity, and strong signals with minimal background in Western blot applications. Only our best-performing antibodies are designated as Picoband, ensuring unmatched performance.
Application	Flow Cytometry, IHC, WB
Clonality	Monoclonal 4C10
Formulation	Each vial contains 4mg Trehalose, 0.9mg NaCl, 0.2mg Na ₂ HPO ₄ , 0.05mg NaN ₃ .
Storage Instructions	Store at -20°C for one year from date of receipt. After reconstitution, at 4°C for one month. It can also be aliquotted and stored frozen at -20°C for six months. Avoid repeated freeze-thaw cycles.
Host	Mouse
Uniprot ID	P15289

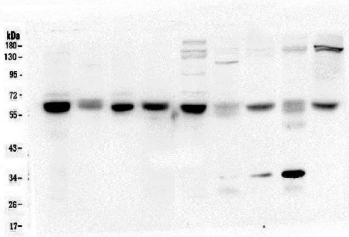
Technical Details

Immunogen	A synthetic peptide corresponding to a sequence at the C-terminus of human ARSA, different from the related mouse sequence by six amino acids.
Recommended Detection Systems	Boster recommends Enhanced Chemiluminescent Kit with anti-Mouse IgG (EK1001) for Western blot, and HRP Conjugated anti-Mouse IgG Super Vision Assay Kit (SV0001-1) for IHC(P).
Cross Reactivity	No cross-reactivity with other proteins.
Isotype	Mouse IgG2a
Form	Lyophilized
Concentration	Adding 0.2 ml of distilled water will yield a concentration of 500 ug/ml.

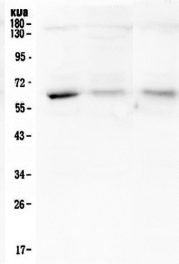
Suggested Dilutions

Western blot, 0.1-0.5ug/ml, Human, Mouse, Rat
Immunohistochemistry (Paraffin-embedded Section), 0.5-1ug/ml, Human
Flow Cytometry (Fixed), 1-3ug/1x10⁶ cells, Human, Mouse

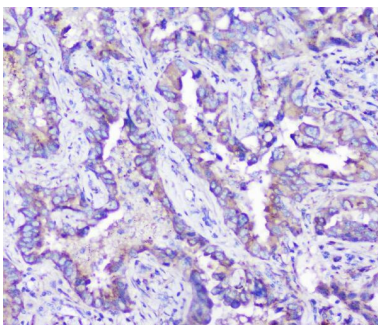
Anti-ARSA Antibody Picoband® (monoclonal, 4C10) (M02583) Images



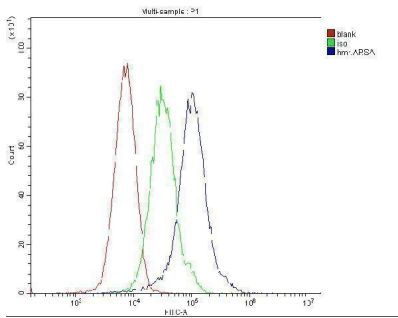
Western blot analysis of ARSA using anti-ARSA antibody (M02583). Electrophoresis was performed on a 10% SDS-PAGE gel at 70V (Stacking gel) / 90V (Resolving gel) for 2-3 hours. The sample well of each lane was loaded with 50ug of sample under reducing conditions. Lane 1: rat testis tissue lysate, Lane 2: rat liver tissue lysate, Lane 3: rat brain tissue lysate, Lane 4: rat lung tissue lysate, Lane 5: mouse testis tissue lysate, Lane 6: mouse liver tissue lysate, Lane 7: mouse brain tissue lysate, Lane 8: mouse lung tissue lysate, Lane 9: mouse HEPA1-6 whole cell lysate. After Electrophoresis, proteins were transferred to a Nitrocellulose membrane at 150mA for 50-90 minutes. Blocked the membrane with 5% Non-fat Milk/ TBS for 1.5 hour at RT. The membrane was incubated with mouse anti-ARSA antigen affinity purified monoclonal antibody (Catalog # M02583) at 0.5 ug/mL overnight at 4°C, then washed with TBS-0.1%Tween 3 times with 5 minutes each and probed with a goat anti-mouse IgG-HRP secondary antibody at a dilution of 1:10000 for 1.5 hour at RT. The signal is developed using an Enhanced Chemiluminescent detection (ECL) kit (Catalog # EK1001) with Tanon 5200 system.



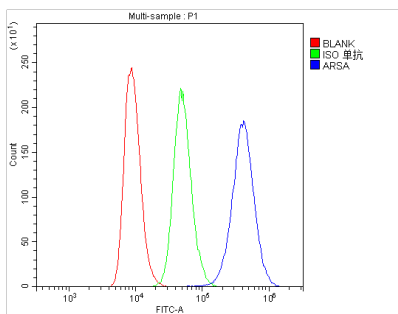
Western blot analysis of ARSA using anti-ARSA antibody (M02583). Electrophoresis was performed on a 10% SDS-PAGE gel at 70V (Stacking gel) / 90V (Resolving gel) for 2-3 hours. The sample well of each lane was loaded with 50ug of sample under reducing conditions. Lane 1: human A375 whole cell lysate, Lane 2: human A549 whole cell lysate, Lane 3: human SMMC-7721 whole cell lysate. After Electrophoresis, proteins were transferred to a Nitrocellulose membrane at 150mA for 50-90 minutes. Blocked the membrane with 5% Non-fat Milk/ TBS for 1.5 hour at RT. The membrane was incubated with mouse anti-ARSA antigen affinity purified monoclonal antibody (Catalog # M02583) at 0.5 ug/mL overnight at 4°C, then washed with TBS-0.1%Tween 3 times with 5 minutes each and probed with a goat anti-mouse IgG-HRP secondary antibody at a dilution of 1:10000 for 1.5 hour at RT. The signal is developed using an Enhanced Chemiluminescent detection (ECL) kit (Catalog # EK1001) with Tanon 5200 system.



IHC analysis of ARSA using anti-ARSA antibody (M02583). ARSA was detected in paraffin-embedded section of human lung cancer tissue. Heat mediated antigen retrieval was performed in citrate buffer (pH6, epitope retrieval solution) for 20 mins. The tissue section was blocked with 10% goat serum. The tissue section was then incubated with 1ug/ml mouse anti-ARSA Antibody (M02583) overnight at 4°C. Biotinylated goat anti-mouse IgG was used as secondary antibody and incubated for 30 minutes at 37°C. The tissue section was developed using Streptavidin-Biotin-Complex (SABC)(Catalog # SA1021) with DAB as the chromogen.



Flow Cytometry analysis of ANA-1 cells using anti-ARSA antibody (M02583). Overlay histogram showing ANA-1 cells stained with M02583 (Blue line). To facilitate intracellular staining, cells were fixed with 4% paraformaldehyde and permeabilized with permeabilization buffer. The cells were blocked with 10% normal goat serum. And then incubated with mouse anti-ARSA Antibody (M02583, 1ug/1x10⁶ cells) for 30 min at 20°C. DyLight®488 conjugated goat anti-mouse IgG (BA1126, 5-10ug/1x10⁶ cells) was used as secondary antibody for 30 minutes at 20°C. Isotype control antibody (Green line) was mouse IgG (1ug/1x10⁶) used under the same conditions. Unlabelled sample (Red line) was also used as a control.



Flow Cytometry analysis of Raji cells using anti-ARSA antibody (M02583). Overlay histogram showing Raji cells stained with M02583 (Blue line). To facilitate intracellular staining, cells were fixed with 4% paraformaldehyde and permeabilized with permeabilization buffer. The cells were blocked with 10% normal goat serum. And then incubated with rabbit anti-ARSA Antibody (M02583, 1ug/1x10⁶ cells) for 30 min at 20°C. DyLight®488 conjugated goat anti-rabbit IgG (BA1127, 5-10ug/1x10⁶ cells) was used as secondary antibody for 30 minutes at 20°C. Isotype control antibody (Green line) was rabbit IgG (1ug/1x10⁶) used under the same conditions. Unlabelled sample (Red line) was also used as a control.

Submit a product review to [Biocompare.com](https://www.biocompare.com)

Submit a review of this product to [Biocompare.com](https://www.biocompare.com) to receive a \$20 Amazon.com giftcard! Your reviews help your fellow scientists make the right decisions. Thank you for your contribution.



Anti-ARSA Antibody (monoclonal, 4C10)

For Research Use Only. Not for use in diagnostic procedures.