

Anti-CD13 ANPEP Rabbit Monoclonal Antibody

Catalog Number: M02591

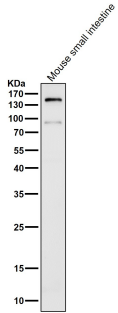
Overview

Product Name	Anti-CD13 ANPEP Rabbit Monoclonal Antibody
Reactive Species	Human, Mouse, Rat
Description	Boster Bio Anti-CD13 ANPEP Rabbit Monoclonal Antibody catalog # M02591. Tested in WB, IHC, ICC/IF, IP applications. This antibody reacts with Human, Mouse, Rat.
Application	IP, IF, IHC, ICC, WB
Clonality	Monoclonal GOF-1
Formulation	Rabbit IgG in stabilizing components, phosphate buffered saline, pH 7.4, 150mM NaCl, 0.02% sodium azide and 50% glycerol. *This antibody is supplied in a stabilized formulation. Compatibility with conjugation reactions depends on the chemistry of the conjugation method used. For conjugation methods that are not compatible with the stabilizing components present in this formulation, a carrier-free antibody format is required.
Storage Instructions	Store at -20°C for one year. For short term storage and frequent use, store at 4°C for up to one month. Avoid repeated freeze-thaw cycles.
Host	Rabbit
Uniprot ID	P15144

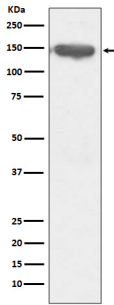
Technical Details

Immunogen	A synthesized peptide derived from human CD13
Isotype	Rabbit IgG
Form	Liquid
Concentration	0.5mg/ml
Purification	Affinity-chromatography
Suggested Dilutions	WB 1:1000-1:2000 IHC 1:100-1:500 ICC/IF 1:100-1:500 IP 1:50

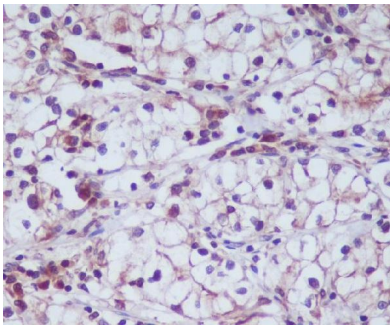
Anti-CD13 ANPEP Rabbit Monoclonal Antibody (M02591) Images



All lanes use the Antibody at 1:2000 dilution for 1 hour at room temperature.



Western blot analysis of CD13 expression in THP-1 cell lysate.



Immunohistochemical analysis of paraffin-embedded human kidney, using CD13 Antibody.

1 Publications Citing This Product

1. PubMed ID: 26616638, Isolation and morphological characterization of ovine amniotic fluid mesenchymal stem cells

Visit bosterbio.com/anti-cd13-rabbit-monoclonal-antibody-m02591-boster.html to see all 1 publications.

Submit a product review to Biocompare.com

Submit a review of this product to Biocompare.com to receive a \$20 Amazon.com giftcard! Your reviews help your fellow scientists make the right decisions. Thank you for your contribution.



Anti-CD13 ANPEP Rabbit Monoclonal Antibody

For Research Use Only. Not for use in diagnostic procedures.