

Anti-CD5 Rabbit Monoclonal Antibody, Clone#RM354

Catalog Number: M02591-2

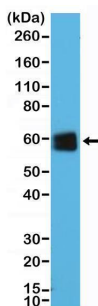
Overview

Product Name	Anti-CD5 Rabbit Monoclonal Antibody, Clone#RM354
Reactive Species	Human
Description	Boster Bio Anti-CD5 Rabbit Monoclonal Antibody, Clone#RM354 (Catalog # M02591-2). Tested in IHC, WB applications. This antibody reacts with Human.
Application	IHC, WB
Clonality	Monoclonal RM354
Formulation	50% Glycerol/PBS with 1% stabilizing protein and 0.09% sodium azide This antibody is supplied in a stabilized formulation. Compatibility with conjugation reactions depends on the chemistry of the conjugation method used. For conjugation methods that are not compatible with the stabilizing components present in this formulation, a carrier-free antibody format is required.
Storage Instructions	Store at -20°C for one year. Avoid repeated freeze-thaw cycles.
Host	Rabbit
Uniprot ID	P06127

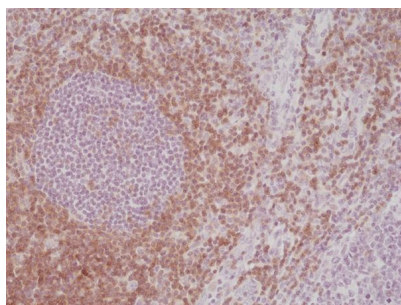
Technical Details

Immunogen	A peptide corresponding to the N-terminus (extracellular domain) of human T-cell surface glycoprotein CD5
Cross Reactivity	This antibody reacts to human CD5
Isotype	Rabbit IgG
Form	Liquid
Concentration	0.5-1mg/ml, actual concentration vary by lot. Use suggested dilution ratio to decide dilution procedure.
Purification	Protein A affinity purified from an animal origin-free culture supernatant
Suggested Dilutions	Immunohistochemistry (IHC): 1:200-1:500 dilution WB: 1:10000-1:25000 dilution.

Anti-CD5 Rabbit Monoclonal Antibody, Clone#RM354 (M02591-2) Images



Western Blotting resultWestern Blot of Jurkat cells lysate using anti-CD5 rabbit monoclonal antibody (Clone RM354) at a 1:25000 dilution.



IHC resultImmunohistochemical staining of formalin fixed and paraffin embedded human tonsil tissue section using anti-CD5 rabbit monoclonal antibody (Clone RM354) at a 1:500 dilution.

Submit a product review to Biocompare.com

Submit a review of this product to Biocompare.com to receive a \$20 Amazon.com giftcard! Your reviews help your fellow scientists make the right decisions. Thank you for your contribution.



Anti-CD5 Rabbit Monoclonal Antibody, Clone#RM354

For Research Use Only. Not for use in diagnostic procedures.