

Anti-ADAM15 Rabbit Monoclonal Antibody

Catalog Number: M02593-1

About ADAM15

F-actin cross-linking protein which is thought to anchor actin to a variety of intracellular structures. This is a bundling protein. Probably involved in vesicular trafficking via its association with the CART complex. The CART complex is necessary for efficient transferrin receptor recycling but not for EGFR degradation.

Overview

Product Name	Anti-ADAM15 Rabbit Monoclonal Antibody
Reactive Species	Human
Description	Boster Bio Anti-ADAM15 Rabbit Monoclonal Antibody catalog # M02593-1. Tested in WB, IHC applications. This antibody reacts with Human.
Conjugate	FITC
Application	IHC, WB
Clonality	Monoclonal 24A12
Formulation	Rabbit IgG in phosphate buffered saline, pH 7.4, 150mM NaCl, 0.02% sodium azide and 50% glycerol, 0.4-0.5mg/ml BSA.
Storage Instructions	Store at -20°C for one year. For short term storage and frequent use, store at 4°C for up to one month. Avoid repeated freeze-thaw cycles.
Host	Rabbit
Uniprot ID	Q13444

Technical Details

Immunogen	A synthesized peptide derived from human ADAM15
Predicted Reactive Species	Human, Primate
Cross Reactivity	Detects ~20kDa. Does not cross-react with alphaB-crystallin, betaL-crystallin, ̢H- crystallin, gamma-crystallin, HSP25, HSP27 or HSP47 proteins.
Isotype	IgG
Form	Liquid
Concentration	Actual concentration vary by lot. Use suggested dilution ratio to decide dilution procedure.
Purification	Affinity-chromatography

Suggested Dilutions

Dilute the sample so that the expected range of concentrations fall within the detection range of this kit.

If the expected range of concentration is unknown, a pilot test should be conducted to decide the optimal dilution ratio for your samples.

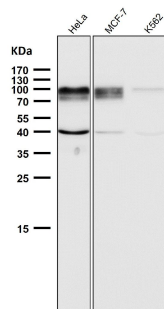
Some PubMed article(s) citing the expression level of this target are as follows:

Boster Bio's internal QC testing used:

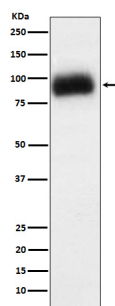
WB 1:500-1:2000

IHC 1:50-1:200

Anti-ADAM15 Rabbit Monoclonal Antibody (M02593-1) Images



All lanes use the Antibody at 1:2W dilution for 1 hour at room temperature.



Western blot analysis of ADAM15 expression in SW480 cell lysate.

Submit a product review to Biocompare.com

Submit a review of this product to Biocompare.com to receive a \$20 Amazon.com giftcard! Your reviews help your fellow scientists make the right decisions. Thank you for your contribution.



Anti-ADAM15 Rabbit Monoclonal Antibody