

Anti-PDE10A Mouse Monoclonal Antibody [Clone ID: OTI3G9]

Catalog Number: M02605-1

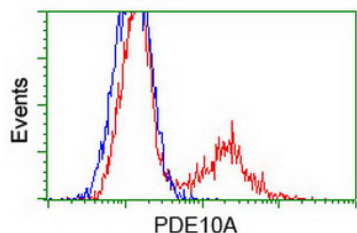
Overview

Product Name	Anti-PDE10A Mouse Monoclonal Antibody [Clone ID: OTI3G9]
Reactive Species	Human, Mouse, Rat
Description	Boster Bio PDE10A mouse monoclonal antibody, clone OTI3G9 (formerly 3G9). Catalog# M02605-1. Tested in FC, IF. This antibody reacts with Human, Mouse, Rat.
Application	Flow Cytometry, IF
Clonality	Monoclonal OTI3G9
Formulation	PBS (pH 7.3) containing 1% stabilizing protein, 50% glycerol and 0.02% sodium azide. This antibody is supplied in a stabilized formulation. Compatibility with conjugation reactions depends on the chemistry of the conjugation method used. For conjugation methods that are not compatible with the stabilizing components present in this formulation, a carrier-free antibody format is required.
Storage Instructions	Store at -20°C as received.
Host	Mouse
Uniprot ID	Q9Y233

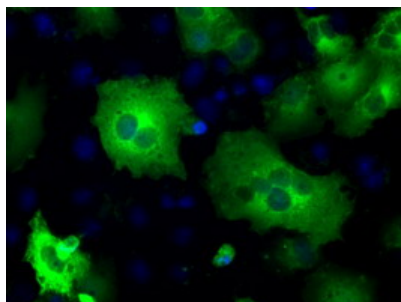
Technical Details

Immunogen	Full length human recombinant protein of human PDE10A (NP_006652) produced in HEK293T cell.
Isotype	IgG2b
Concentration	1 mg/ml
Purification	Purified from mouse ascites fluids or tissue culture supernatant by affinity chromatography (protein A/G)
Suggested Dilutions	IF 1:100 Flow Cytometry 1:100

Anti-PDE10A Mouse Monoclonal Antibody [Clone ID: OTI3G9] (M02605-1) Images



HEK293T cells transfected with either PDE10A (Myc-DDK-tagged) overexpress plasmid (Red) or empty vector control plasmid (Blue) were immunostained by anti-PDE10A antibody (M02605-1)



Anti-PDE10A mouse monoclonal antibody (M02605-1) immunofluorescent staining of COS7 cells transiently transfected by pCMV6-ENTRY PDE10A.

Submit a product review to [Biocompare.com](https://www.biocompare.com)

Submit a review of this product to [Biocompare.com](https://www.biocompare.com) to receive a \$20 Amazon.com giftcard! Your reviews help your fellow scientists make the right decisions. Thank you for your contribution.



Anti-PDE10A Mouse Monoclonal Antibody [Clone ID: OTI3G9]

For Research Use Only. Not for use in diagnostic procedures.