

Anti-YES1 Antibody

Catalog Number: M02640-1

About YES1

Non-receptor protein tyrosine kinase that is involved in the regulation of cell growth and survival, apoptosis, cell-cell adhesion, cytoskeleton remodeling, and differentiation. Stimulation by receptor tyrosine kinases (RTKs) including EGRF, PDGFR, CSF1R and FGFR leads to recruitment of YES1 to the phosphorylated receptor, and activation and phosphorylation of downstream substrates. Upon EGFR activation, promotes the phosphorylation of PARD3 to favor epithelial tight junction assembly. Participates in the phosphorylation of specific junctional components such as CTNND1 by stimulating the FYN and FER tyrosine kinases at cell-cell contacts. Upon T-cell stimulation by CXCL12, phosphorylates collapsin response mediator protein 2/DPYSL2 and induces T-cell migration. Participates in CD95L/FASLG signaling pathway and mediates AKT-mediated cell migration. Plays a role in cell cycle progression by phosphorylating the cyclin-dependent kinase 4/CDK4 thus regulating the G1 phase. Also involved in G2/M progression and cytokinesis.

Overview

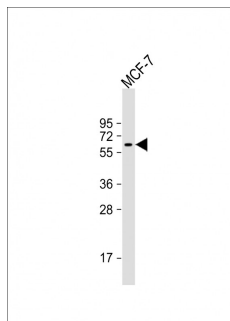
Product Name	Anti-YES1 Antibody
Reactive Species	Human
Description	Boster Bio Anti-YES1 Antibody (Catalog # M02640-1). Tested in WB application(s). This antibody reacts with Human.
Application	WB
Clonality	Monoclonal 1612CT505.7.50
Formulation	Purified monoclonal antibody supplied in PBS with 0.09% (W/V) sodium azide.
Storage Instructions	Maintain refrigerated at 2-8°C for up to 2 weeks. For long-term storage, store at -20°C in small aliquots to prevent freeze-thaw cycles.
Host	Mouse
Uniprot ID	P07947

Technical Details

Immunogen	This YES1 antibody is generated from a mouse immunized with a recombinant protein of human YES1.
Predicted Reactive Species	Mouse
Isotype	IgG1,k
Purification	This antibody is purified through a protein G column, followed by dialysis against PBS.
Suggested Dilutions	Dilute the sample so that the expected range of concentrations fall within the detection range of this kit.

If the expected range of concentration is unknown, a pilot test should be conducted to decide the optimal dilution ratio for your samples.
Some PubMed article(s) citing the expression level of this target are as follows:
Boster Bio's internal QC testing used:
WB: 1:4000

Anti-YES1 Antibody (M02640-1) Images



Anti-YES1 Antibody at 1:4000 dilution + MCF-7 whole cell lysate
Lysates/proteins at 20 µg per lane.
Secondary
Goat Anti-mouse IgG, (H+L), Peroxidase conjugated at 1/10000 dilution.
Predicted band size : 61 kDa
Blocking/Dilution buffer: 5% NFDM/TBST.

Submit a product review to Biocompare.com

Submit a review of this product to Biocompare.com to receive a \$20 Amazon.com giftcard! Your reviews help your fellow scientists make the right decisions. Thank you for your contribution.



Anti-YES1 Antibody