

Anti-IFIT1 Mouse Monoclonal Antibody [Clone ID: OTI3G8]

Catalog Number: M02652

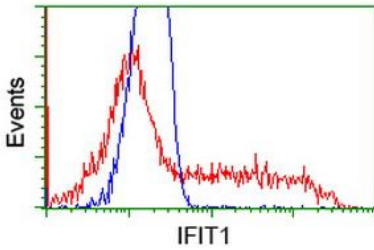
Overview

Product Name	Anti-IFIT1 Mouse Monoclonal Antibody [Clone ID: OTI3G8]
Reactive Species	Human, Mouse, Rat
Description	Boster Bio IFIT1 mouse monoclonal antibody, clone OTI3G8 (formerly 3G8). Catalog# M02652. Tested in FC, IF, IHC, WB. This antibody reacts with Human, Mouse, Rat.
Application	Flow Cytometry, IF, IHC, WB
Clonality	Monoclonal OTI3G8
Formulation	PBS (pH 7.3) containing 1% stabilizing protein, 50% glycerol and 0.02% sodium azide. This antibody is supplied in a stabilized formulation. Compatibility with conjugation reactions depends on the chemistry of the conjugation method used. For conjugation methods that are not compatible with the stabilizing components present in this formulation, a carrier-free antibody format is required.
Storage Instructions	Store at -20°C as received.
Host	Mouse
Uniprot ID	P09914

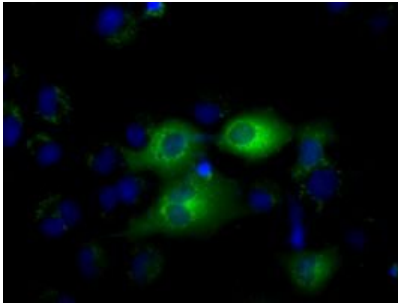
Technical Details

Immunogen	Full length human recombinant protein of human IFIT1 (NP_000899) produced in HEK293T cell.
Isotype	IgG1
Concentration	1 mg/ml
Purification	Purified from mouse ascites fluids or tissue culture supernatant by affinity chromatography (protein A/G)
Suggested Dilutions	WB 1:500~1000 IHC 1:50 IF 1:50~100 Flow Cytometry 1:100

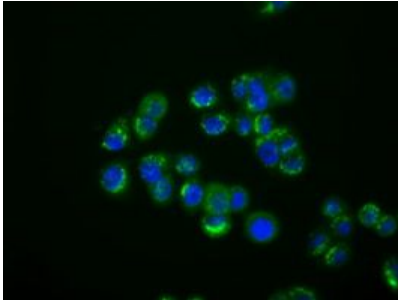
Anti-IFIT1 Mouse Monoclonal Antibody [Clone ID: OTI3G8] (M02652) Images



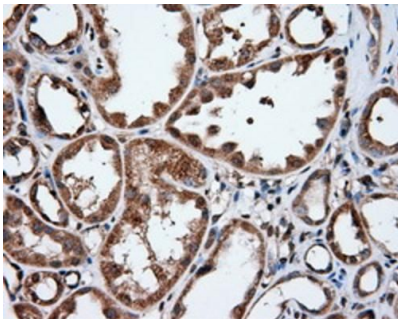
HEK293T cells transfected with either overexpress plasmid (Red) or empty vector control plasmid (Blue) were immunostained by anti-IFIT1 antibody (M02652), and then analyzed by flow cytometry.



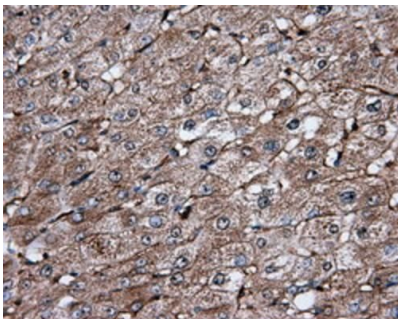
Anti-IFIT1 mouse monoclonal antibody (M02652) immunofluorescent staining of COS7 cells transiently transfected by pCMV6-ENTRY IFIT1.



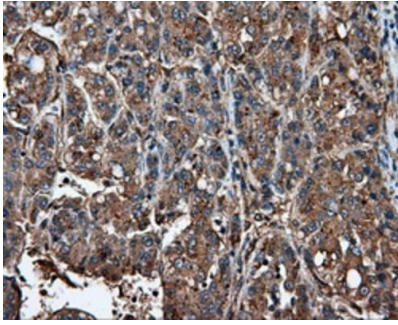
Immunofluorescent staining of HT29 cells using anti-IFIT1 mouse monoclonal antibody (M02652).



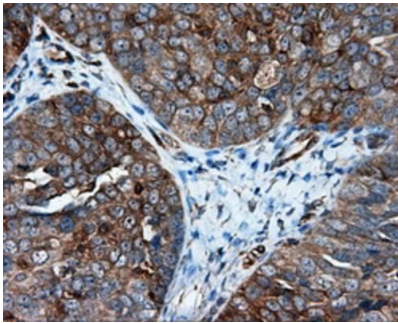
Immunohistochemical staining of paraffinembedded Human Kidney tissue within the normal limits using anti-IFIT1 mouse monoclonal antibody. (Heat-induced epitope retrieval by 10mM citric buffer, pH6.0, 100°C for 10min, M02652)



Immunohistochemical staining of paraffinembedded Human liver tissue within the normal limits using anti-IFIT1 mouse monoclonal antibody. (Heat-induced epitope retrieval by 10mM citric buffer, pH6.0, 100°C for 10min, M02652)



Immunohistochemical staining of paraffinembedded Carcinoma of Human liver tissue using anti-IFIT1 mouse monoclonal antibody. (Heat-induced epitope retrieval by 10mM citric buffer, pH6.0, 100°C for 10min, M02652)



Immunohistochemical staining of paraffinembedded Adenocarcinoma of Human ovary tissue using anti-IFIT1 mouse monoclonal antibody. (Heat-induced epitope retrieval by 10mM citric buffer, pH6.0, 100°C for 10min, M02652)

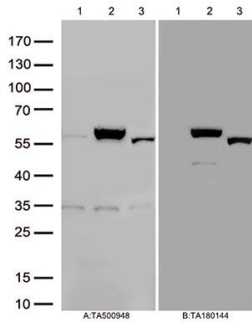
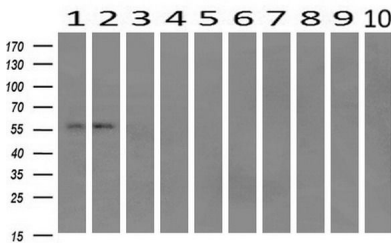


Figure A, Western blot analysis of overexpressed lysates(25ug per lane) from HEK293T cells transfected with empty plasmid (lane 1) , human IFIT1 plasmid (lane 2), mouse IFIT1 plasmid (lane 3) using anti-IFIT1 antibody M02652 (1:500). Figure B, Western blot analysis of the same samples as figure A with anti-DDK antibody (1:1000)



Western blot analysis of extracts (10ug) from 10 Human tissue by using anti-IFIT1 monoclonal antibody at 1:200 (1: Testis; 2: Omentum; 3: Uterus; 4: Breast; 5: Brain; 6: Liver; 7: Ovary; 8: Thyroid gland; 9: colon;10: spleen).

Submit a product review to Biocompare.com

Submit a review of this product to Biocompare.com to receive a \$20 Amazon.com giftcard! Your reviews help your fellow scientists make the right decisions. Thank you for your contribution.



Anti-IFIT1 Mouse Monoclonal Antibody [Clone ID: OTI3G8]

For Research Use Only. Not for use in diagnostic procedures.