

Anti-CD3E Rabbit Monoclonal Antibody, Clone#RM344

Catalog Number: M02675-3

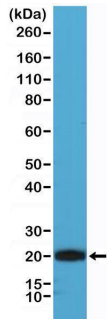
Overview

Product Name	Anti-CD3E Rabbit Monoclonal Antibody, Clone#RM344
Reactive Species	Human
Description	Boster Bio Anti-CD3E Rabbit Monoclonal Antibody, Clone#RM344 (Catalog # M02675-3). Tested in IHC, WB applications. This antibody reacts with Human.
Application	IHC, WB
Clonality	Monoclonal RM344
Formulation	50% Glycerol/PBS with 1% stabilizing protein and 0.09% sodium azide This antibody is supplied in a stabilized formulation. Compatibility with conjugation reactions depends on the chemistry of the conjugation method used. For conjugation methods that are not compatible with the stabilizing components present in this formulation, a carrier-free antibody format is required.
Storage Instructions	Store at -20°C for one year. Avoid repeated freeze-thaw cycles.
Host	Rabbit
Uniprot ID	P07766

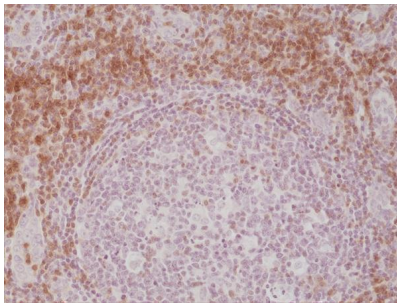
Technical Details

Immunogen	A peptide corresponding to the C-terminus of human CD3 epsilon chain.
Cross Reactivity	This antibody reacts to the cytoplasmic domain of human CD3 epsilon chain.
Isotype	Rabbit IgG
Form	Liquid
Concentration	0.5-1mg/ml, actual concentration vary by lot. Use suggested dilution ratio to decide dilution procedure.
Purification	Protein A affinity purified from an animal origin-free culture supernatant
Suggested Dilutions	Immunohistochemistry (IHC): 1:100-1:200 dilution WB: 1:1000-1:2000 dilution.

Anti-CD3E Rabbit Monoclonal Antibody, Clone#RM344 (M02675-3) Images



Western Blotting result Western Blot of Jurkat cell lysate using anti-CD3e rabbit monoclonal antibody (Clone RM344) at a 1:1000 dilution.



IHC result Immunohistochemical staining of formalin fixed and paraffin embedded human Tonsil tissue section using anti-CD3e rabbit monoclonal antibody (Clone RM344) at a 1:200 dilution.

1 Publications Citing This Product

1. PubMed ID: 20470401, Li Y, Geng S, Yin Q, Chen S, Yang L, Wu X, Li B, Du X, Schmidt Ca, Przybylski Gk. J Transl Med. 2010 May 14;8:47. Doi: 10.1186/1479-5876-8-47. Decreased Level Of Recent Thymic Emigrants In Cd4+ And Cd8+ T Cells From Cml Patients.

Visit bosterbio.com/anti-cd3e-rabbit-monoclonal-antibody-clone-rm344-m02675-3-boster.html to see all 1 publications.

Submit a product review to Biocompare.com

Submit a review of this product to Biocompare.com to receive a \$20 Amazon.com giftcard! Your reviews help your fellow scientists make the right decisions. Thank you for your contribution.



Anti-CD3E Rabbit Monoclonal Antibody, Clone#RM344

For Research Use Only. Not for use in diagnostic procedures.