

Anti-PLXNB1 Antibody (C-term)

Catalog Number: M02711

About PLXNB1

Receptor for SEMA4D. Plays a role in RHOA activation and subsequent changes of the actin cytoskeleton. Plays a role in axon guidance, invasive growth and cell migration.

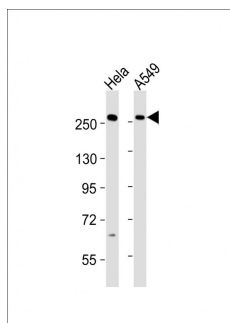
Overview

Product Name	Anti-PLXNB1 Antibody (C-term)
Reactive Species	Human
Description	Boster Bio Anti-PLXNB1 Antibody (C-term) (Catalog # M02711). Tested in WB application(s). This antibody reacts with Human.
Application	WB
Clonality	Polyclonal
Formulation	Purified polyclonal antibody supplied in PBS with 0.09% (W/V) sodium azide.
Storage Instructions	Maintain refrigerated at 2-8°C for up to 2 weeks. For long-term storage, store at -20°C in small aliquots to prevent freeze-thaw cycles.
Host	Rabbit
Uniprot ID	O43157

Technical Details

Immunogen	This PLXNB1 antibody is generated from a rabbit immunized with a KLH conjugated synthetic peptide between 1715-1749 amino acids from the C-terminal region of human PLXNB1.
Predicted Reactive Species	Bovine, Chicken, Horse, Monkey, Pig, Sheep, Xenopus
Isotype	Rabbit IgG
Purification	This antibody is purified through a protein A column, followed by peptide affinity purification.
Suggested Dilutions	WB: 1:2000

Anti-PLXNB1 Antibody (C-term) (M02711) Images



All lanes : Anti-PLXNB1 Antibody (C-term) at 1:2000 dilution
Lane 1: Hela whole cell lysates
Lane 2: A549 whole cell lysates
Lysates/proteins at 20 µg per lane.
Secondary Goat Anti-Rabbit IgG, (H+L), Peroxidase conjugated at 1/10000 dilution
Predicted band size : 232 kDa
Blocking/Dilution buffer: 5% NFDN/TBST.

Submit a product review to Biocompare.com

Submit a review of this product to Biocompare.com to receive a \$20 Amazon.com giftcard! Your reviews help your fellow scientists make the right decisions. Thank you for your contribution.



Anti-PLXNB1 Antibody (C-term)

For Research Use Only. Not for use in diagnostic procedures.