

## Anti-Zinc Alpha 2 Glycoprotein (AZGP1) Mouse Monoclonal Antibody [Clone ID: OTI10F2]

Catalog Number: M02718

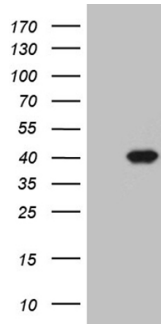
### Overview

Product Name	Anti-Zinc Alpha 2 Glycoprotein (AZGP1) Mouse Monoclonal Antibody [Clone ID: OTI10F2]
Reactive Species	Human
Description	Boster Bio AZGP1 mouse monoclonal antibody, clone OTI10F2. Catalog# M02718. Tested in IHC, WB. This antibody reacts with Human.
Application	IHC, WB
Clonality	Monoclonal OTI10F2
Formulation	PBS (PH 7.3) containing 1% BSA, 50% glycerol and 0.02% sodium azide.
Storage Instructions	Store at -20°C as received.
Host	Mouse
Uniprot ID	P25311

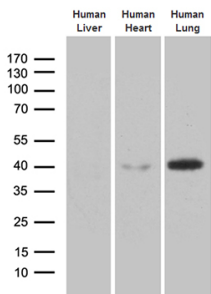
### Technical Details

Immunogen	Human recombinant protein fragment corresponding to amino acids 21-298 of human AZGP1 (NP_001176) produced in E.coli.
Isotype	IgG1
Concentration	1 mg/ml
Purification	Purified from mouse ascites fluids or tissue culture supernatant by affinity chromatography (protein A/G)

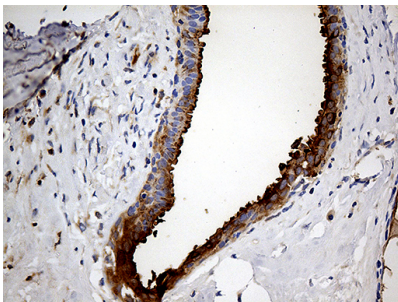
## Anti-Zinc Alpha 2 Glycoprotein (AZGP1) Mouse Monoclonal Antibody [Clone ID: OTI10F2] (M02718) Images



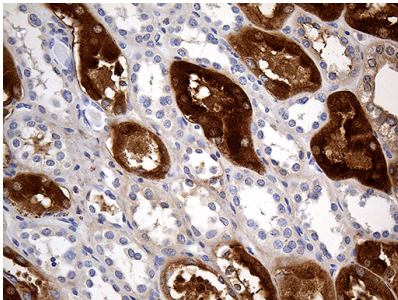
HEK293T cells were transfected with the pCMV6-ENTRY control (Left lane) or pCMV6-ENTRY AZGP1 (Right lane) cDNA for 48 hrs and lysed. Equivalent amounts of cell lysates (5 ug per lane) were separated by SDS-PAGE and immunoblotted with anti-AZGP1.



Western blot analysis of extracts (35ug) from 3 tissue lysates by using anti-AZGP1 monoclonal antibody (1:500).

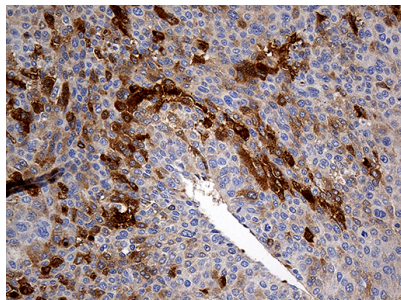
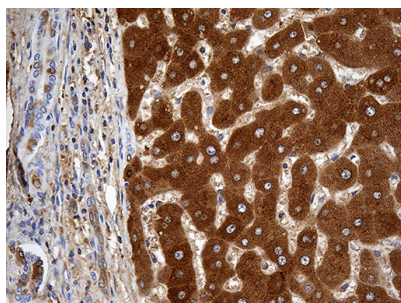


Immunohistochemical staining of paraffin-embedded Human breast tissue within the normal limits using anti-AZGP1 mouse monoclonal antibody. (Heat-induced epitope retrieval by 1mM EDTA in 10mM Tris buffer (pH8.5) at 120°C for 3min)



Immunohistochemical staining of paraffin-embedded Human Kidney tissue within the normal limits using anti-AZGP1 mouse monoclonal antibody. (Heat-induced epitope retrieval by 1mM EDTA in 10mM Tris buffer (pH8.5) at 120°C for 3min)

Immunohistochemical staining of paraffin-embedded Human liver tissue within the normal limits using anti-AZGP1 mouse monoclonal antibody. (Heat-induced epitope retrieval by 1mM EDTA in 10mM Tris buffer (pH8.5) at 120°C for 3min)



Immunohistochemical staining of paraffin-embedded Carcinoma of Human liver tissue using anti-AZGP1 mouse monoclonal antibody. (Heat-induced epitope retrieval by 1mM EDTA in 10mM Tris buffer (pH8.5) at 120Å°C for 3min)

## Submit a product review to [Biocompare.com](https://www.biocompare.com)

Submit a review of this product to [Biocompare.com](https://www.biocompare.com) to receive a \$20 Amazon.com giftcard! Your reviews help your fellow scientists make the right decisions. Thank you for your contribution.



Anti-Zinc Alpha 2 Glycoprotein (AZGP1) Mouse Monoclonal Antibody [Clone ID: OT110F2]