

Anti-RCC1 Antibody Picoband® (monoclonal, 7B5D2)

Catalog Number: M02719-1

About RCC1

CHC1, also named as RCC1, SNHG3-RCC1, promotes the exchange of ran-bound gdp by gtp. It is involved in the regulation of onset of chromosome condensation in the S-phase. Phosphorylation of RCC1 on serines located in or near its nuclear localization signal activates RCC1 to generate RanGTP on mitotic chromosomes, which is required for spindle assembly and chromosome segregation. This antibody is a rabbit polyclonal antibody raised against residues near the C terminus of human RCC1. The geneID has updated as 1104 recently.

Overview

Product Name	Anti-RCC1 Antibody Picoband® (monoclonal, 7B5D2)
Reactive Species	Human
Description	Boster Bio Anti-RCC1 Antibody Picoband® (monoclonal, 7B5D2) catalog # M02719-1. Tested in WB applications. This antibody reacts with Human. The brand Picoband indicates this is a premium antibody that guarantees superior quality, high affinity, and strong signals with minimal background in Western blot applications. Only our best-performing antibodies are designated as Picoband, ensuring unmatched performance.
Application	WB
Clonality	Monoclonal 7B5D2
Formulation	Each vial contains 4 mg Trehalose, 0.9 mg NaCl and 0.2 mg Na ₂ HPO ₄ .
Storage Instructions	At -20°C for one year from date of receipt. After reconstitution, at 4°C for one month. It can also be aliquotted and stored frozen at -20°C for six months. Avoid repeated freezing and thawing.
Host	Mouse
Uniprot ID	P18754

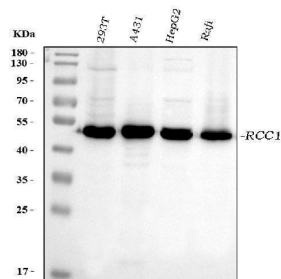
Technical Details

Immunogen	E.coli-derived human RCC1 recombinant protein (Position: A14-S421).
Recommended Detection Systems	Boster recommends Enhanced Chemiluminescent Kit with anti- IgG (EK1001) for Western blot.
Cross Reactivity	No cross-reactivity with other proteins.
Isotype	Mouse IgG1
Form	Lyophilized
Concentration	Adding 0.2 ml of distilled water will yield a concentration of 500 ug/ml.
Purification	Immunogen affinity purified.

Suggested Dilutions

Western blot, 0.25-0.5 ug/ml, Human

Anti-RCC1 Antibody Picoband® (monoclonal, 7B5D2) (M02719-1) Images



Western blot analysis of RCC1 using anti-RCC1 antibody (M02719-1). Electrophoresis was performed on a 5-20% SDS-PAGE gel at 70V (Stacking gel) / 90V (Resolving gel) for 2-3 hours. The sample well of each lane was loaded with 30 ug of sample under reducing conditions. Lane 1: human 293T whole cell lysates, Lane 2: human A431 whole cell lysates, Lane 3: human HepG2 whole cell lysates, Lane 4: human Raji whole cell lysates. After electrophoresis, proteins were transferred to a nitrocellulose membrane at 150 mA for 50-90 minutes. Blocked the membrane with 5% non-fat milk/TBS for 1.5 hour at RT. The membrane was incubated with mouse anti-RCC1 antigen affinity purified monoclonal antibody (Catalog # M02719-1) at 0.5 ug/mL overnight at 4°C, then washed with TBS-0.1%Tween 3 times with 5 minutes each and probed with a goat anti-mouse IgG-HRP secondary antibody at a dilution of 1:10000 for 1.5 hour at RT. The signal is developed using an Enhanced Chemiluminescent detection (ECL) kit (Catalog # EK1001) with Tanon 5200 system. A specific band was detected for RCC1 at approximately 47 kDa. The expected band size for RCC1 is at 47 kDa.

Submit a product review to Biocompare.com

Submit a review of this product to Biocompare.com to receive a \$20 Amazon.com giftcard! Your reviews help your fellow scientists make the right decisions. Thank you for your contribution.



Anti-RCC1 Antibody (monoclonal, 7B5D2)

For Research Use Only. Not for use in diagnostic procedures.