

Anti-KAT8 / MYST1 / MOF Rabbit Monoclonal Antibody

Catalog Number: M02757-1

About KAT8

F-actin cross-linking protein which is thought to anchor actin to a variety of intracellular structures. This is a bundling protein. Probably involved in vesicular trafficking via its association with the CART complex. The CART complex is necessary for efficient transferrin receptor recycling but not for EGFR degradation.

Overview

Product Name	Anti-KAT8 / MYST1 / MOF Rabbit Monoclonal Antibody
Reactive Species	Human, Mouse, Rat
Description	Boster Bio Anti-KAT8 / MYST1 / MOF Rabbit Monoclonal Antibody catalog # M02757-1. Tested in WB, IHC, ICC/IF, IP, Flow Cytometry applications. This antibody reacts with Human, Mouse, Rat.
Conjugate	FITC
Application	Flow Cytometry, IP, IF, IHC, ICC, WB
Clonality	Monoclonal 19K10
Formulation	Rabbit IgG in phosphate buffered saline, pH 7.4, 150mM NaCl, 0.02% sodium azide and 50% glycerol, 0.4-0.5mg/ml BSA.
Storage Instructions	Store at -20°C for one year. For short term storage and frequent use, store at 4°C for up to one month. Avoid repeated freeze-thaw cycles.
Host	Rabbit
Uniprot ID	Q9H7Z6

Technical Details

Immunogen	A synthesized peptide derived from human KAT8 / MYST1 / MOF
Predicted Reactive Species	Human, Primate
Cross Reactivity	Detects ~20kDa. Does not cross-react with alphaB-crystallin, betaL-crystallin, ̢H- crystallin, gamma-crystallin, HSP25, HSP27 or HSP47 proteins.
Isotype	IgG
Form	Liquid
Concentration	Actual concentration vary by lot. Use suggested dilution ratio to decide dilution procedure.
Purification	Affinity-chromatography

Suggested Dilutions

Dilute the sample so that the expected range of concentrations fall within the detection range of this kit.

If the expected range of concentration is unknown, a pilot test should be conducted to decide the optimal dilution ratio for your samples.

Some PubMed article(s) citing the expression level of this target are as follows:

Boster Bio's internal QC testing used:

WB 1:500-1:1000

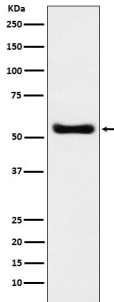
IHC 1:50-1:200

ICC/IF 1:100-1:500

IP 1:100

FC 1:100

Anti-KAT8 / MYST1 / MOF Rabbit Monoclonal Antibody (M02757-1) Images



Western blot analysis of KAT8 / MYST1 / MOF expression in HeLa cell lysate.

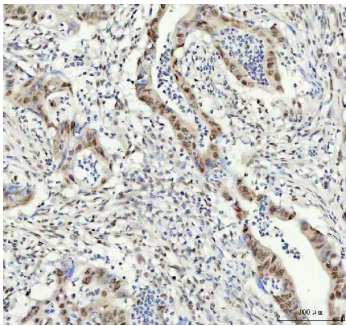


Figure 2. IHC analysis of KAT8 / MYST1 / MOF using anti-KAT8 / MYST1 / MOF antibody (M02757-1). KAT8 / MYST1 / MOF was detected in a paraffin-embedded section of human colorectal adenocarcinoma tissue. Heat mediated antigen retrieval was performed in EDTA buffer (pH 8.0, epitope retrieval solution). The tissue section was blocked with 10% goat serum. The tissue section was then incubated with 1:50 rabbit anti-KAT8 / MYST1 / MOF Antibody (M02757-1) overnight at 4°C. Peroxidase Conjugated Goat Anti-rabbit IgG was used as secondary antibody and incubated for 30 minutes at 37°C. The tissue section was developed using HRP Conjugated Rabbit IgG Super Vision Assay Kit (Catalog # SV0002) with DAB as the chromogen.

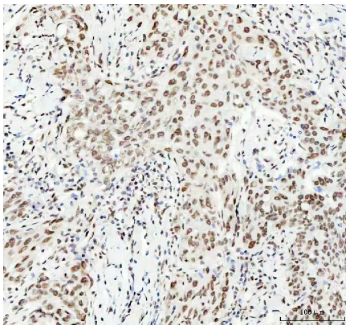


Figure 3. IHC analysis of KAT8 / MYST1 / MOF using anti-KAT8 / MYST1 / MOF antibody (M02757-1). KAT8 / MYST1 / MOF was detected in a paraffin-embedded section of human breast cancer tissue. Heat mediated antigen retrieval was performed in EDTA buffer (pH 8.0, epitope retrieval solution). The tissue section was blocked with 10% goat serum. The tissue section was then incubated with 1:50 rabbit anti-KAT8 / MYST1 / MOF Antibody (M02757-1) overnight at 4°C. Peroxidase Conjugated Goat Anti-rabbit IgG was used as secondary antibody and incubated for 30 minutes at 37°C. The tissue section was developed using HRP Conjugated Rabbit IgG Super Vision Assay Kit (Catalog # SV0002) with DAB as the chromogen.

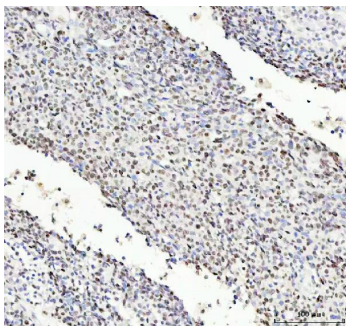


Figure 4. IHC analysis of KAT8 / MYST1 / MOF using anti-KAT8 / MYST1 / MOF antibody (M02757-1). KAT8 / MYST1 / MOF was detected in a paraffin-embedded section of human lung squamous cell carcinoma tissue. Heat mediated antigen retrieval was performed in EDTA buffer (pH 8.0, epitope retrieval solution). The tissue section was blocked with 10% goat serum. The tissue section was then incubated with 1:50 rabbit anti-KAT8 / MYST1 / MOF Antibody (M02757-1) overnight at 4°C. Peroxidase Conjugated Goat Anti-rabbit IgG was used as secondary antibody and incubated for 30 minutes at 37°C. The tissue section was developed using HRP Conjugated Rabbit IgG

Super Vision Assay Kit (Catalog # SV0002) with DAB as the chromogen.

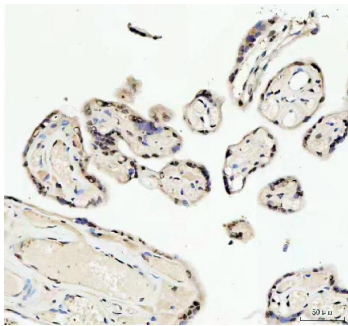


Figure 5. IHC analysis of KAT8 / MYST1 / MOF using anti-KAT8 / MYST1 / MOF antibody (M02757-1). KAT8 / MYST1 / MOF was detected in a paraffin-embedded section of human placenta tissue. Heat mediated antigen retrieval was performed in EDTA buffer (pH 8.0, epitope retrieval solution). The tissue section was blocked with 10% goat serum. The tissue section was then incubated with 1:50 rabbit anti-KAT8 / MYST1 / MOF Antibody (M02757-1) overnight at 4°C. Peroxidase Conjugated Goat Anti-rabbit IgG was used as secondary antibody and incubated for 30 minutes at 37°C. The tissue section was developed using HRP Conjugated Rabbit IgG Super Vision Assay Kit (Catalog # SV0002) with DAB as the chromogen.

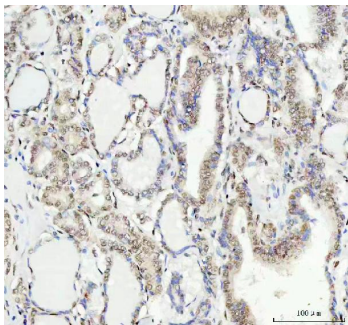


Figure 6. IHC analysis of KAT8 / MYST1 / MOF using anti-KAT8 / MYST1 / MOF antibody (M02757-1). KAT8 / MYST1 / MOF was detected in a paraffin-embedded section of human thyroid cancer tissue. Heat mediated antigen retrieval was performed in EDTA buffer (pH 8.0, epitope retrieval solution). The tissue section was blocked with 10% goat serum. The tissue section was then incubated with 1:50 rabbit anti-KAT8 / MYST1 / MOF Antibody (M02757-1) overnight at 4°C. Peroxidase Conjugated Goat Anti-rabbit IgG was used as secondary antibody and incubated for 30 minutes at 37°C. The tissue section was developed using HRP Conjugated Rabbit IgG Super Vision Assay Kit (Catalog # SV0002) with DAB as the chromogen.

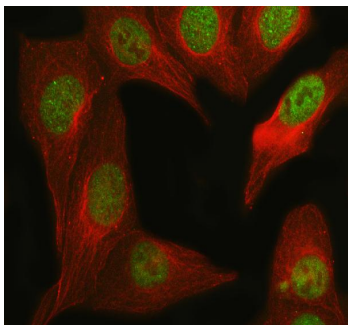


Figure 7. IF analysis of KAT8 / MYST1 / MOF using anti-KAT8 / MYST1 / MOF antibody (M02757-1) and anti-Beta Tubulin antibody (M01857-3). KAT8 / MYST1 / MOF was detected in immunocytochemical section of U2OS cell. Enzyme antigen retrieval was performed using IHC enzyme antigen retrieval reagent (AR0022) for 15 mins. The cells were blocked with 10% goat serum. And then incubated at 1:100 with rabbit anti-KAT8 / MYST1 / MOF Antibody (M02757-1) and mouse anti-Beta Tubulin antibody (M01857-3) overnight at 4°C. DyLight®488 Conjugated Goat Anti-Rabbit IgG (BA1127) and DyLight550-conjugated Anti-mouse IgG Secondary Antibody (red)(Catalog#BA1133) were used as secondary antibody at 1:500 dilution and incubated for 30 minutes at 37°C. Visualize using a fluorescence microscope and filter sets appropriate for the label used.

Submit a product review to Biocompare.com

Submit a review of this product to Biocompare.com to receive a \$20 Amazon.com giftcard! Your reviews help your fellow scientists make the right decisions. Thank you for your contribution.



Anti-KAT8 / MYST1 / MOF Rabbit Monoclonal Antibody