

Anti-Y14 (RBM8A) Mouse Monoclonal Antibody [Clone ID: OTI10B10]

Catalog Number: M02769

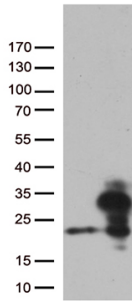
Overview

Product Name	Anti-Y14 (RBM8A) Mouse Monoclonal Antibody [Clone ID: OTI10B10]
Reactive Species	Human, Mouse, Rat
Description	Boster Bio RBM8A mouse monoclonal antibody, clone OTI10B10. Catalog# M02769. Tested in WB. This antibody reacts with Human, Mouse, Rat.
Application	WB
Clonality	Monoclonal OTI10B10
Formulation	PBS (pH 7.3) containing 1% stabilizing protein, 50% glycerol and 0.02% sodium azide. This antibody is supplied in a stabilized formulation. Compatibility with conjugation reactions depends on the chemistry of the conjugation method used. For conjugation methods that are not compatible with the stabilizing components present in this formulation, a carrier-free antibody format is required.
Storage Instructions	Store at -20°C as received.
Host	Mouse
Uniprot ID	Q9Y5S9

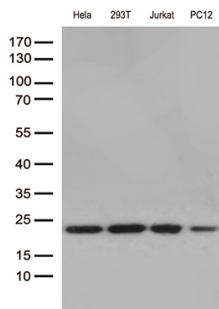
Technical Details

Immunogen	Human recombinant protein fragment corresponding to amino acids 2-174 of human RBM8A (NP_005096) produced in E.coli.
Isotype	IgG2a
Concentration	1 mg/ml
Purification	Purified from mouse ascites fluids or tissue culture supernatant by affinity chromatography (protein A/G)
Suggested Dilutions	WB 1:250~500

Anti-Y14 (RBM8A) Mouse Monoclonal Antibody [Clone ID: OTI10B10] (M02769) Images



HEK293T cells were transfected with the pCMV6-ENTRY control (Left lane) or pCMV6-ENTRY RBM8A (Right lane) cDNA for 48 hrs and lysed. Equivalent amounts of cell lysates (5 ug per lane) were separated by SDS-PAGE and immunoblotted with anti-RBM8A (1:500).



Western blot analysis of extracts (35ug) from 4 cell lines lysates by using anti-RBM8A monoclonal antibody (1:250).

Submit a product review to [Biocompare.com](https://www.biocompare.com)

Submit a review of this product to [Biocompare.com](https://www.biocompare.com) to receive a \$20 Amazon.com giftcard! Your reviews help your fellow scientists make the right decisions. Thank you for your contribution.



Anti-Y14 (RBM8A) Mouse Monoclonal Antibody [Clone ID: OTI10B10]

For Research Use Only. Not for use in diagnostic procedures.