

Anti-CK1 epsilon (CSNK1E) Mouse Monoclonal Antibody [Clone ID: OTI5D4]

Catalog Number: M02775

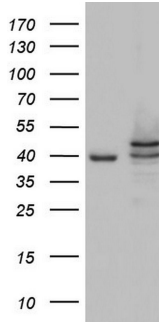
Overview

Product Name	Anti-CK1 epsilon (CSNK1E) Mouse Monoclonal Antibody [Clone ID: OTI5D4]
Reactive Species	Human, Mouse, Rat
Description	Boster Bio CSNK1E mouse monoclonal antibody, clone OTI5D4 (formerly 5D4). Catalog# M02775. Tested in IHC, WB. This antibody reacts with Human, Mouse, Rat.
Application	IHC, WB
Clonality	Monoclonal OTI5D4
Formulation	PBS (pH 7.3) containing 1% stabilizing protein, 50% glycerol and 0.02% sodium azide. This antibody is supplied in a stabilized formulation. Compatibility with conjugation reactions depends on the chemistry of the conjugation method used. For conjugation methods that are not compatible with the stabilizing components present in this formulation, a carrier-free antibody format is required.
Storage Instructions	Store at -20°C as received.
Host	Mouse
Uniprot ID	P49674

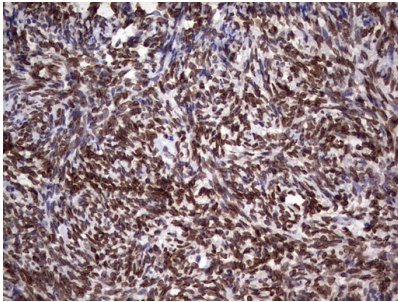
Technical Details

Immunogen	Human recombinant protein fragment corresponding to amino acids 153-416 of human CSNK1E (NP_689407) produced in E.coli.
Isotype	IgG1
Concentration	1 mg/ml
Purification	Purified from mouse ascites fluids or tissue culture supernatant by affinity chromatography (protein A/G)
Suggested Dilutions	WB 1:2000 IHC 1:150

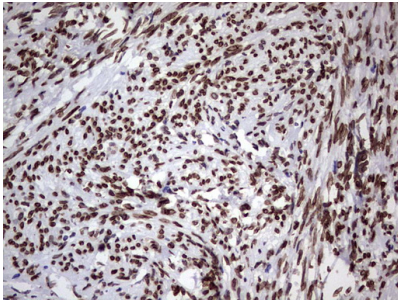
Anti-CK1 epsilon (CSNK1E) Mouse Monoclonal Antibody [Clone ID: OTI5D4] (M02775) Images



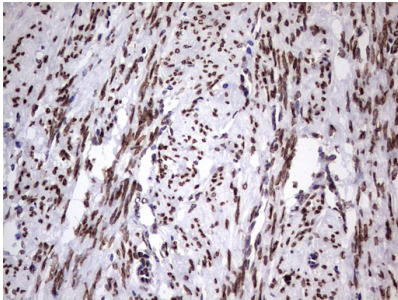
HEK293T cells were transfected with the pCMV6-ENTRY control (Left lane) or pCMV6-ENTRY CSNK1E (Right lane) cDNA for 48 hrs and lysed. Equivalent amounts of cell lysates (5 ug per lane) were separated by SDS-PAGE and immunoblotted with anti-CSNK1E.



Immunohistochemical staining of paraffin-embedded Human Ovary tissue within the normal limits using anti-CSNK1E mouse monoclonal antibody. (Heat-induced epitope retrieval by 1 mM EDTA in 10mM Tris)

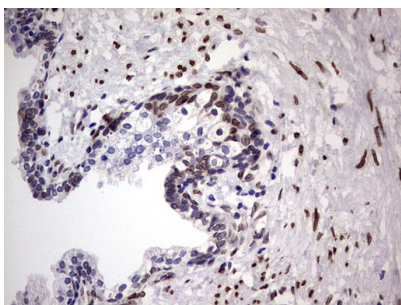


Immunohistochemical staining of paraffin-embedded Human endometrium tissue within the normal limits using anti-CSNK1E mouse monoclonal antibody. (Heat-induced epitope retrieval by 1 mM EDTA in 10mM Tris)



Immunohistochemical staining of paraffin-embedded Adenocarcinoma of Human endometrium tissue using anti-CSNK1E mouse monoclonal antibody. (Heat-induced epitope retrieval by 1 mM EDTA in 10mM Tris)

Immunohistochemical staining of paraffin-embedded Carcinoma of Human prostate tissue using anti-CSNK1E mouse monoclonal antibody. (Heat-induced epitope retrieval by 1 mM EDTA in 10mM Tris)



Submit a product review to Biocompare.com

Submit a review of this product to Biocompare.com to receive a \$20 Amazon.com giftcard! Your reviews help your fellow scientists make the right decisions. Thank you for your contribution.



Anti-CK1 epsilon (CSNK1E) Mouse Monoclonal Antibody [Clone ID: OT15D4]

For Research Use Only. Not for use in diagnostic procedures.