

Anti-EDG2 (LPAR1) Mouse Monoclonal Antibody [Clone ID: OTI1G6]

Catalog Number: M02782-1

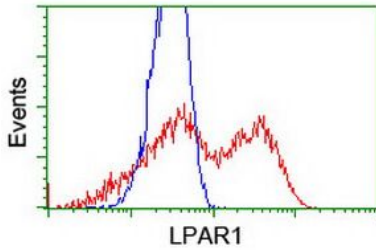
Overview

Product Name	Anti-EDG2 (LPAR1) Mouse Monoclonal Antibody [Clone ID: OTI1G6]
Reactive Species	Human, Mouse, Rat
Description	Boster Bio LPAR1 (EDG2) mouse monoclonal antibody, clone OTI1G6 (formerly 1G6). Catalog# M02782-1. Tested in FC, IF, WB. This antibody reacts with Human, Mouse, Rat.
Application	Flow Cytometry, IF, WB
Clonality	Monoclonal OTI1G6
Formulation	PBS (pH 7.3) containing 1% stabilizing protein, 50% glycerol and 0.02% sodium azide. This antibody is supplied in a stabilized formulation. Compatibility with conjugation reactions depends on the chemistry of the conjugation method used. For conjugation methods that are not compatible with the stabilizing components present in this formulation, a carrier-free antibody format is required.
Storage Instructions	Store at -20°C as received.
Host	Mouse
Uniprot ID	Q92633

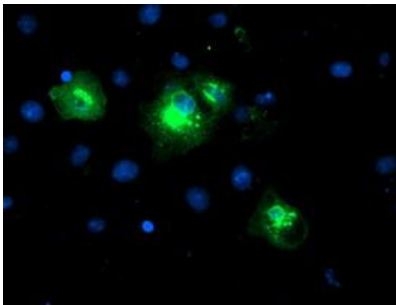
Technical Details

Immunogen	Full length human recombinant protein of human LPAR1 (NP_001392) produced in HEK293T cell.
Isotype	IgG2b
Concentration	0.8 mg/ml
Purification	Purified from mouse ascites fluids or tissue culture supernatant by affinity chromatography (protein A/G)
Suggested Dilutions	WB: 1:2000 IF: 1:100 Flow cytometry: 1:100

Anti-EDG2 (LPAR1) Mouse Monoclonal Antibody [Clone ID: OTI1G6] (M02782-1) Images



HEK293T cells transfected with either overexpress plasmid (Red) or empty vector control plasmid (Blue) were immunostained by anti-LPAR1 antibody (), and then analyzed by flow cytometry.



Anti-LPAR1 mouse monoclonal antibody (M02782-1) immunofluorescent staining of COS7 cells transiently transfected by pCMV6-ENTRY LPAR1.

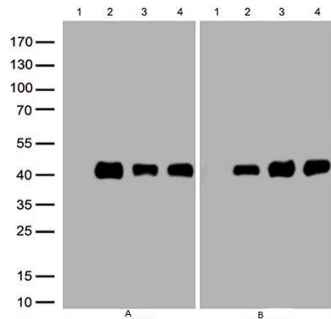


Figure A, Western blot analysis of overexpressed lysates(25ug per lane) from HEK293T cells transfected with empty plasmid (lane1) , human LPAR1 plasmid (lane 2), mouse LPAR1 plasmid (lane 3), rat LPAR1 plasmid (lane 4) using antiLPAR1 antibody M02782-1(1:500). Figure B, Western blot analysis of the same samples as figure A with anti-DDK antibody (1:1000)

Submit a product review to Biocompare.com

Submit a review of this product to Biocompare.com to receive a \$20 Amazon.com giftcard! Your reviews help your fellow scientists make the right decisions. Thank you for your contribution.



Anti-EDG2 (LPAR1) Mouse Monoclonal Antibody [Clone ID: OTI1G6]

For Research Use Only. Not for use in diagnostic procedures.