

## Anti-SETD7 Mouse Monoclonal Antibody [Clone ID: OTI2D10]

Catalog Number: M02793-1

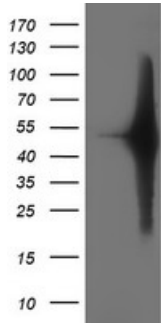
### Overview

Product Name	Anti-SETD7 Mouse Monoclonal Antibody [Clone ID: OTI2D10]
Reactive Species	Dog, Human, Monkey, Mouse, Rat
Description	Boster Bio SETD7 mouse monoclonal antibody, clone OTI2D10 (formerly 2D10). Catalog# M02793-1. Tested in FC, IF, IHC, WB. This antibody reacts with Human, Monkey, Mouse, Rat, Dog.
Application	Flow Cytometry, IF, IHC, WB
Clonality	Monoclonal OTI2D10
Formulation	PBS (pH 7.3) containing 1% stabilizing protein, 50% glycerol and 0.02% sodium azide. This antibody is supplied in a stabilized formulation. Compatibility with conjugation reactions depends on the chemistry of the conjugation method used. For conjugation methods that are not compatible with the stabilizing components present in this formulation, a carrier-free antibody format is required.
Storage Instructions	Store at -20°C as received.
Host	Mouse
Uniprot ID	Q8WTS6

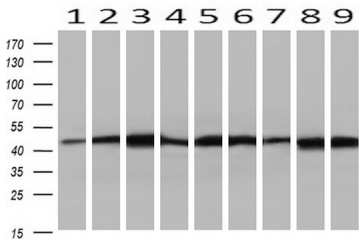
### Technical Details

Immunogen	Full length human recombinant protein of human SETD7 (NP_085151) produced in HEK293T cell.
Isotype	IgG2b
Concentration	1 mg/ml
Purification	Purified from mouse ascites fluids or tissue culture supernatant by affinity chromatography (protein A/G)
Suggested Dilutions	WB: 1:500-2000 IHC: 1:150 IF: 1:100 Flow cytometry: 1:100

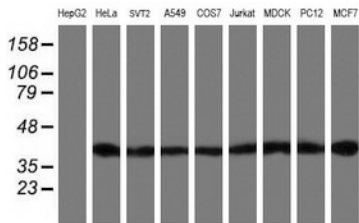
## Anti-SETD7 Mouse Monoclonal Antibody [Clone ID: OTI2D10] (M02793-1) Images



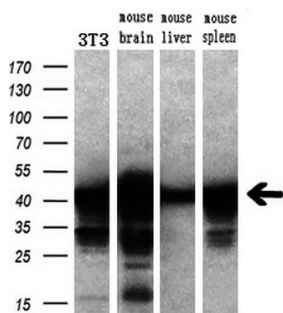
HEK293T cells were transfected with the pCMV6-ENTRY control (Left lane) or pCMV6-ENTRY SETD7 (Right lane) cDNA for 48 hrs and lysed. Equivalent amounts of cell lysates (5 ug per lane) were separated by SDS-PAGE and immunoblotted with anti-SETD7.



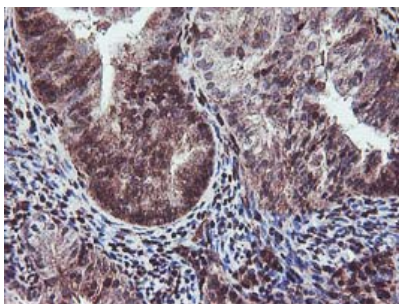
Western blot analysis of extracts (10ug) from 9 Human tissue by using anti-SETD7 monoclonal antibody at 1:200 (1: Testis; 2: Omentum; 3: Uterus; 4: Breast; 5: Brain; 6: Liver; 7: Ovary; 8: Thyroid gland; 9: colon).



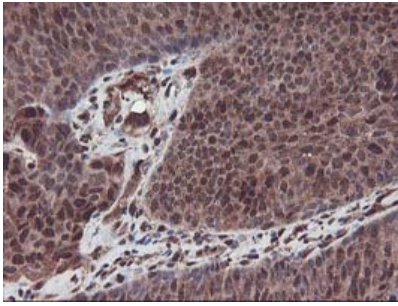
Western blot analysis of extracts (35ug) from 9 different cell lines by using anti-SETD7 monoclonal antibody.



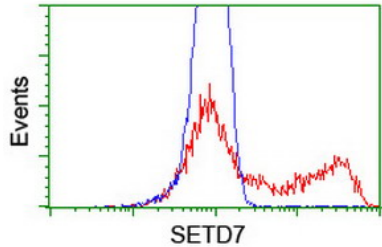
Western blot analysis of extracts (10ug) from a mouse cell line and 3 different mouse tissues by using anti-SETD7 monoclonal antibody (1:200).



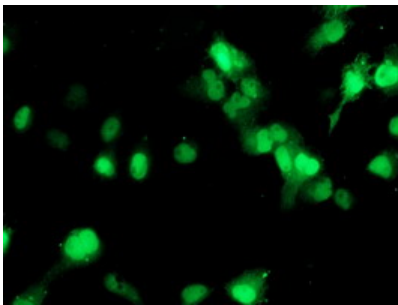
Immunohistochemical staining of paraffin-embedded Adenocarcinoma of Human endometrium tissue using anti-SETD7 mouse monoclonal antibody. (Heat-induced epitope retrieval by 10mM citric buffer)



Immunohistochemical staining of paraffin-embedded Carcinoma of Human bladder tissue using anti-SETD7 mouse monoclonal antibody. (Heat-induced epitope retrieval by 10mM citric buffer)



HEK293T cells transfected with either SETD7 (Myc-DDK-tagged) overexpress plasmid (Red) or empty vector control plasmid (Blue) were immunostained by anti-SETD7 antibody (M02793-1)



Anti-SETD7 mouse monoclonal antibody (M02793-1) immunofluorescent staining of COS7 cells transiently transfected by pCMV6-ENTRY SETD7.

## Submit a product review to Biocompare.com

Submit a review of this product to Biocompare.com to receive a \$20 Amazon.com giftcard! Your reviews help your fellow scientists make the right decisions. Thank you for your contribution.



Anti-SETD7 Mouse Monoclonal Antibody [Clone ID: OT12D10]

For Research Use Only. Not for use in diagnostic procedures.